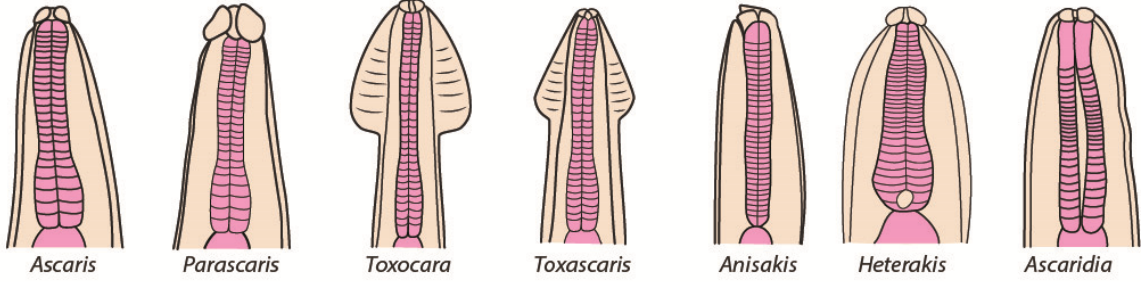


Nematode heads 2

Ascaridoidea



Ascaris

Parascaris

Toxocara

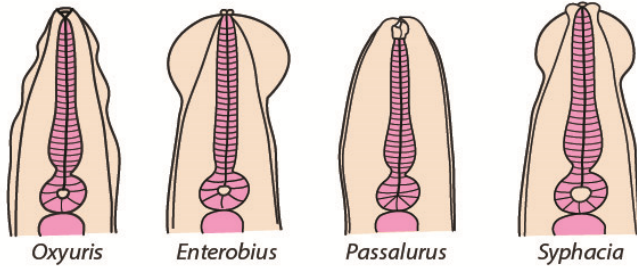
Toxascaris

Anisakis

Heterakis

Ascaridia

Oxyuroidea



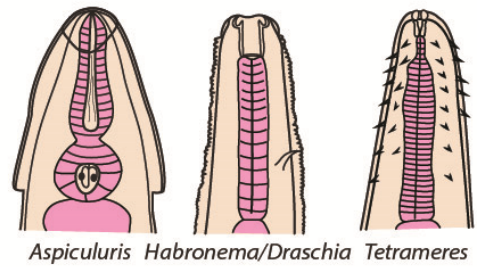
Oxyuris

Enterobius

Passalurus

Syphacia

Habronematoidea

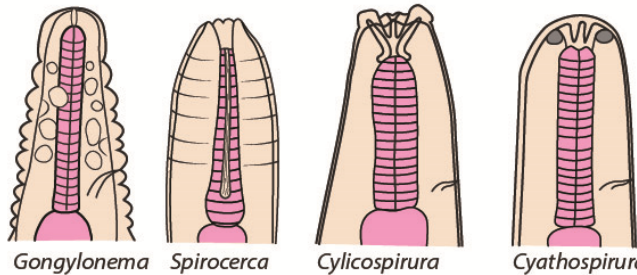


Aspiculuris

Habronema/Dracchia

Tetrameres

Spiruroidea



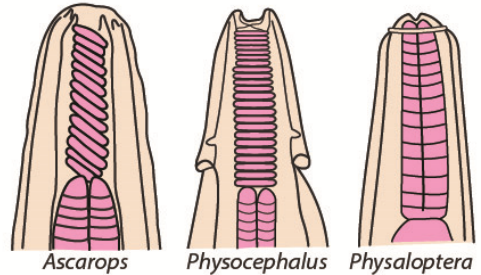
Gongylonema

Spirocerca

Cylicospirura

Cyathospirura

Physalopteroidea

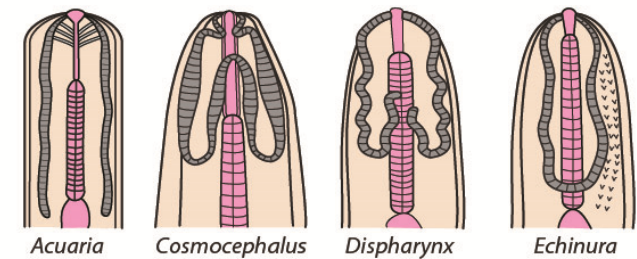


Ascarops

Physocephalus

Physaloptera

Acuarioidea



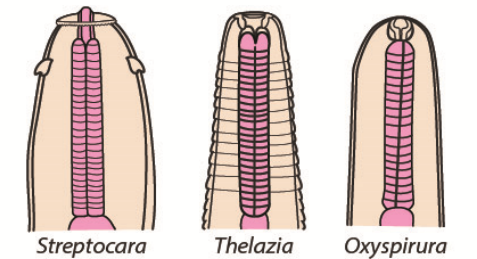
Acuaria

Cosmocephalus

Dispharynx

Echinura

Thelazioidea

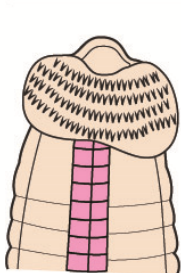


Streptocara

Thelazia

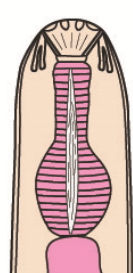
Oxyspirura

Gnathostomatoidea



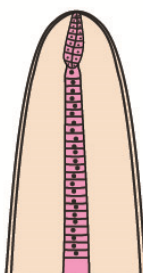
Gnathostoma

Camallanoidea

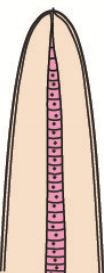


Camallanus

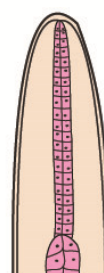
Trichinelloidea



Trichinella

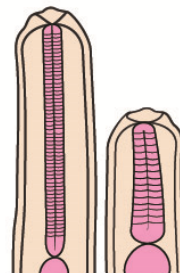


Trichuris



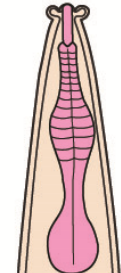
Capillaria

Strongyloidea



Strongyloides

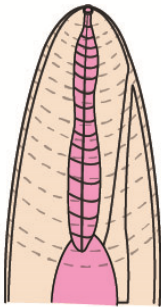
Rhabditoidea



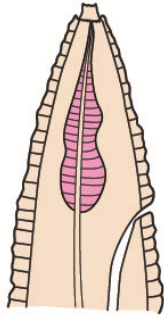
Rhabditis/Pelodera

Nematode heads 3

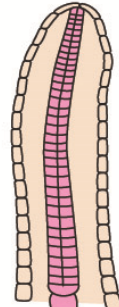
Filarioidea



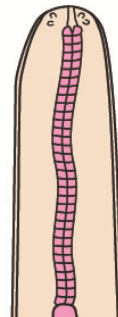
Parafilaria



Stephanofilaria

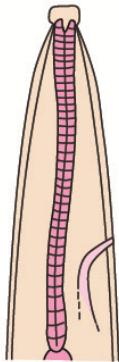


Onchocerca

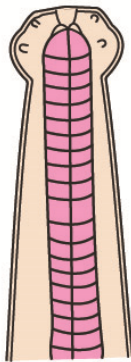


Mansonella

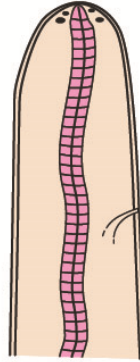
Filarioidea



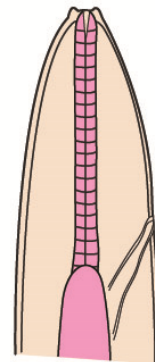
Wuchereria



Brugia

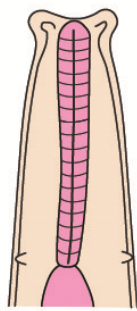


Loa

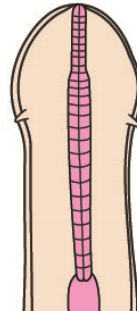


Setaria

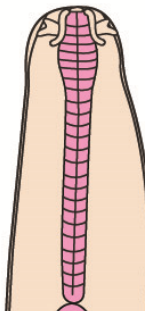
Filarioidea



*Dipetalonema/
Acanthocheilonema*



Dirofilaria



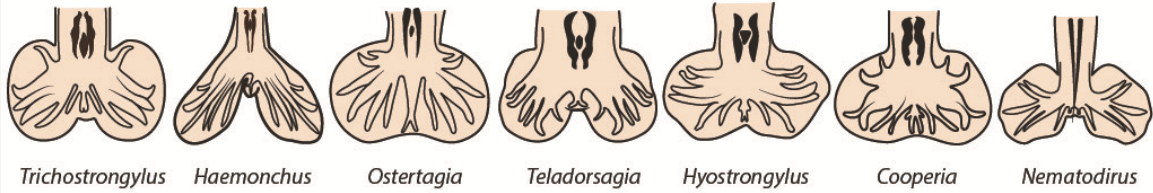
Dracunculus

Dracunculoidea

Nematode tails (bursate males)

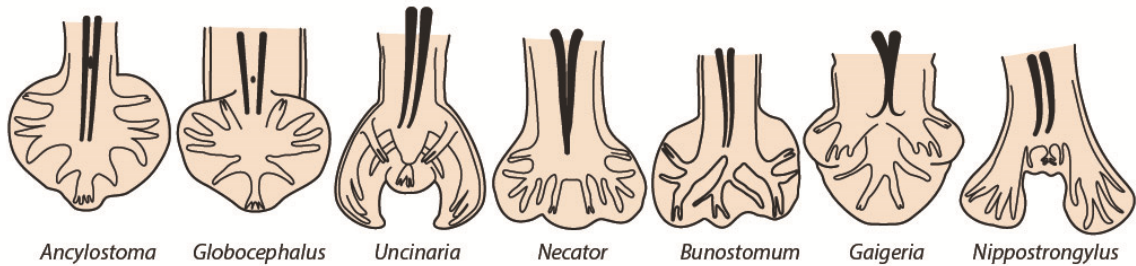
Strongyloidea

trichostrongyles



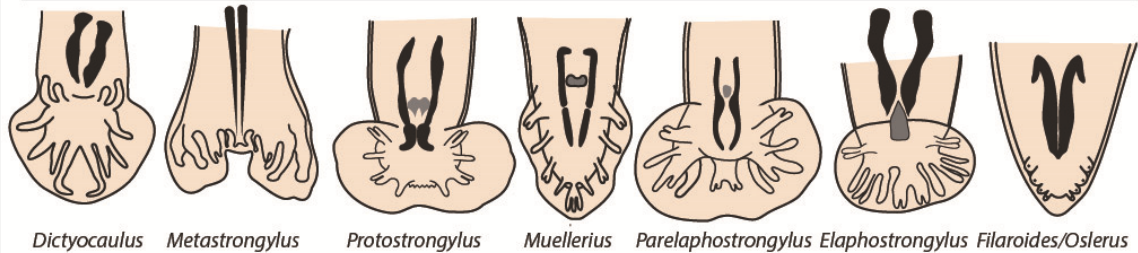
Strongyloidea

hookworms



Strongyloidea

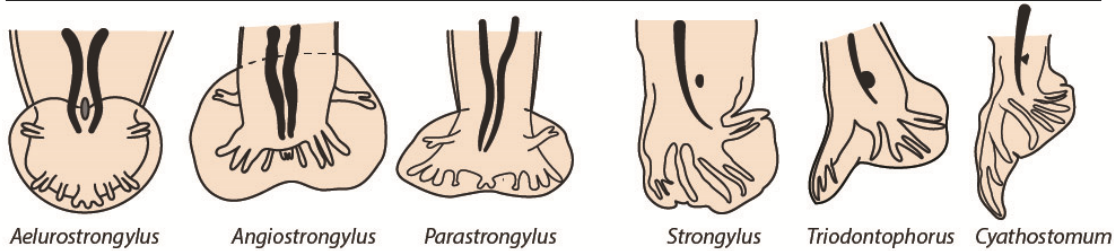
lungworms



Strongyloidea

lungworms

strongyles



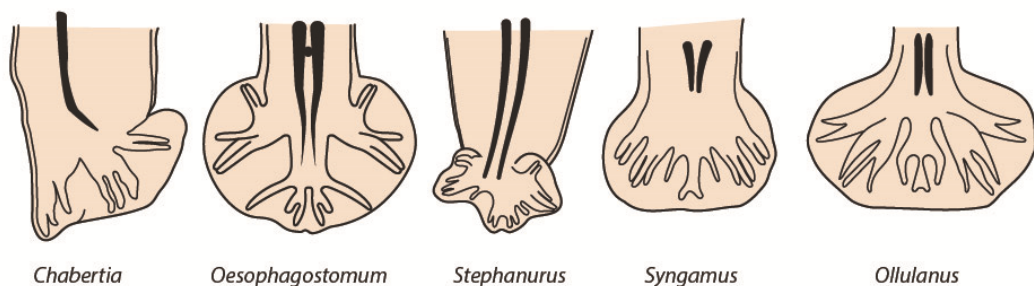
Strongyloidea

nodular worms

kidney worm

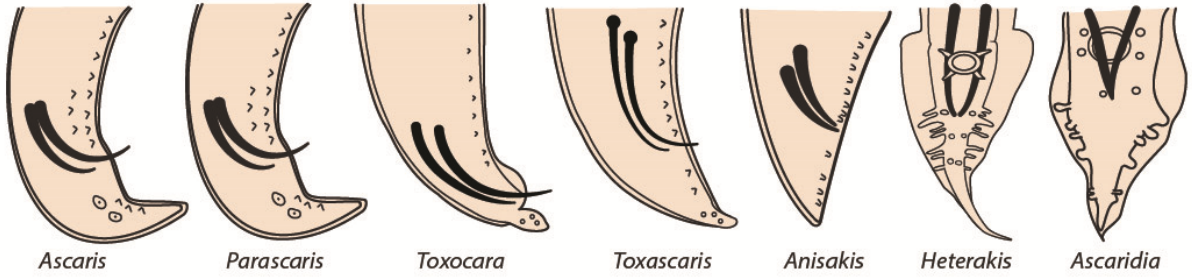
gapeworm

stomach worm



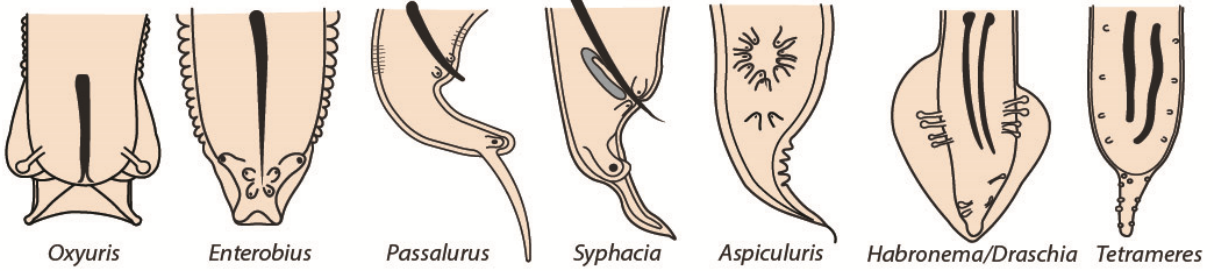
Nematode tails (non-bursate males)

Ascaridoidea



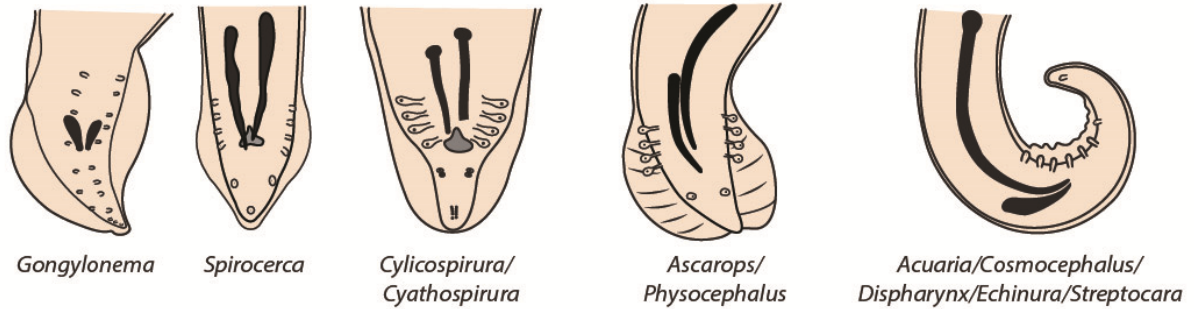
Oxyuroidea

Habronematoidea



Spiuroidea

Acuarioidea



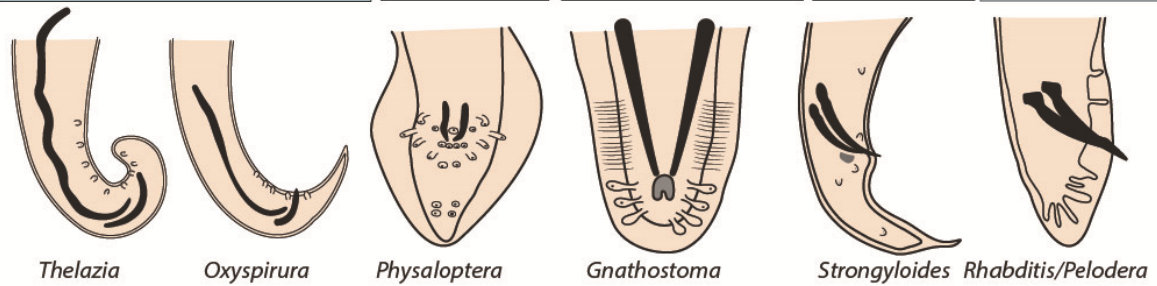
Thelazioidea

Physalopteroidea

Gnathostomatoidea

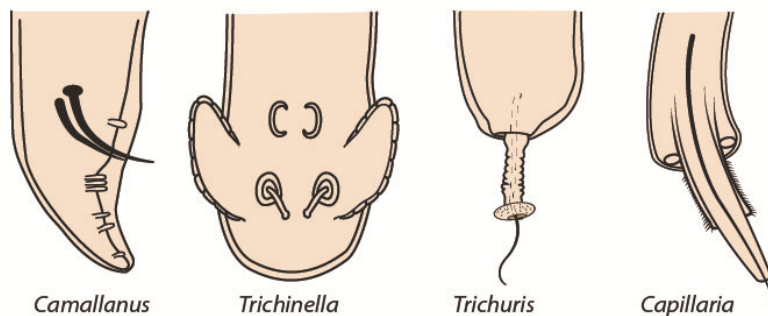
Strongyloidea

Rhabditoidea



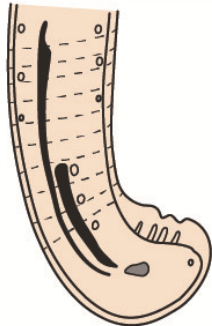
Camallanoidea

Trichinelloidea

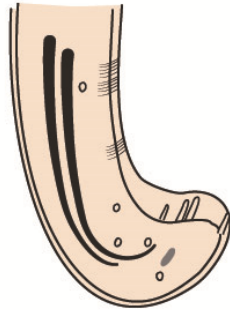


Nematode tails (non-bursate males)

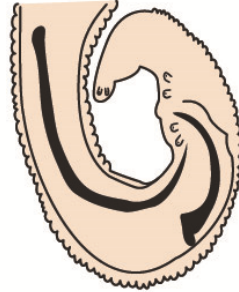
Filarioidea



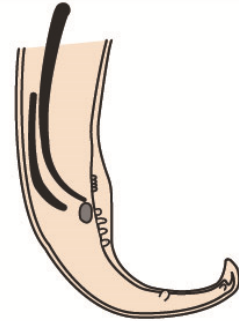
Parafilaria



Stephanofilaria

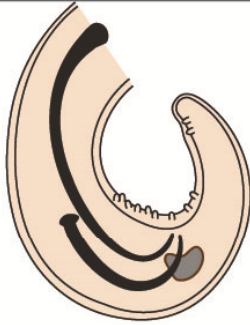


Onchocerca

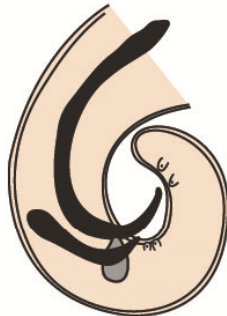


Mansonella

Filarioidea



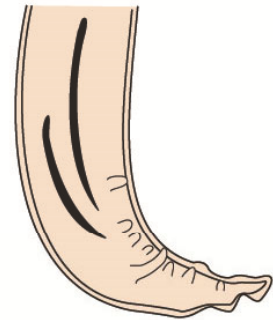
Wuchereria



Brugia

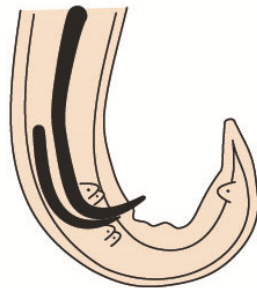


Loa



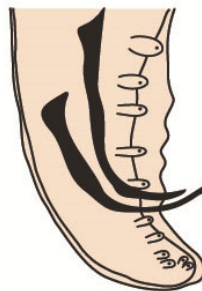
Setaria

Filarioidea

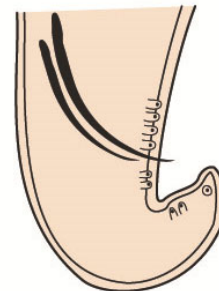


*Dipetalonema/
Acanthocheilonema*

Dracunculoidea

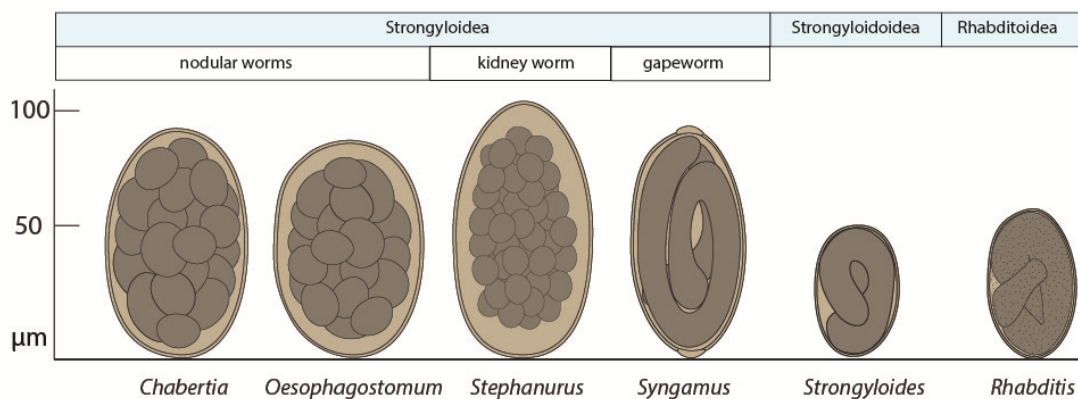
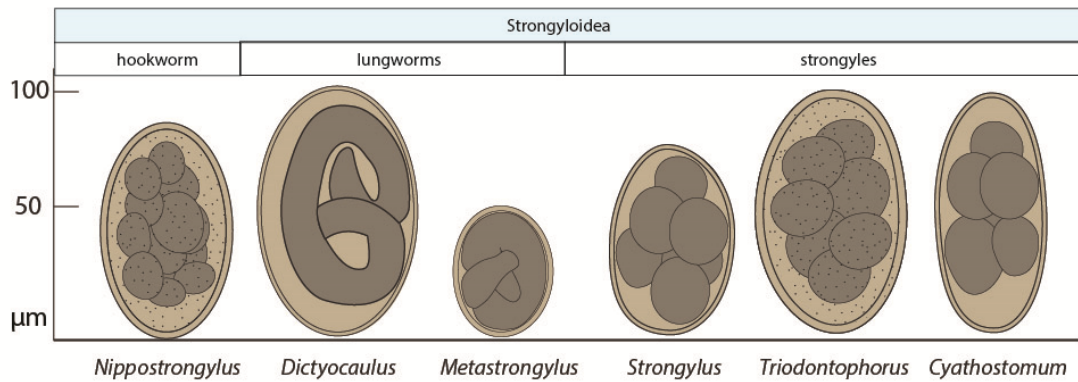
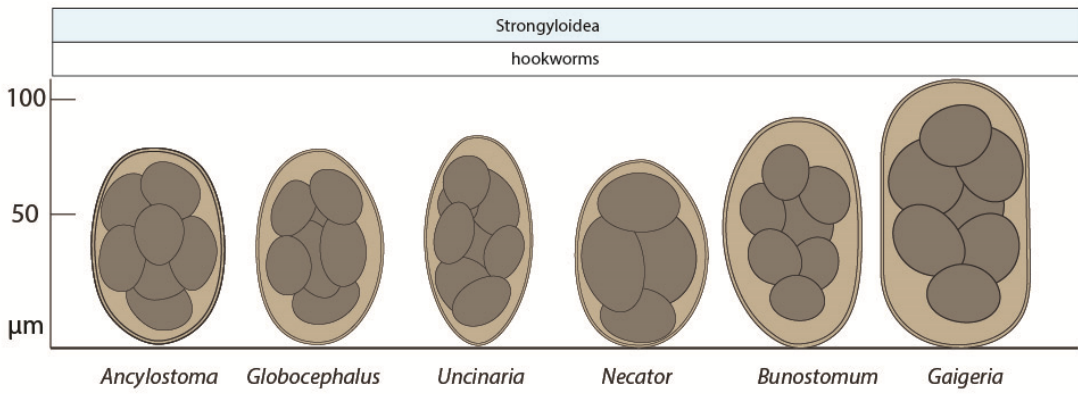
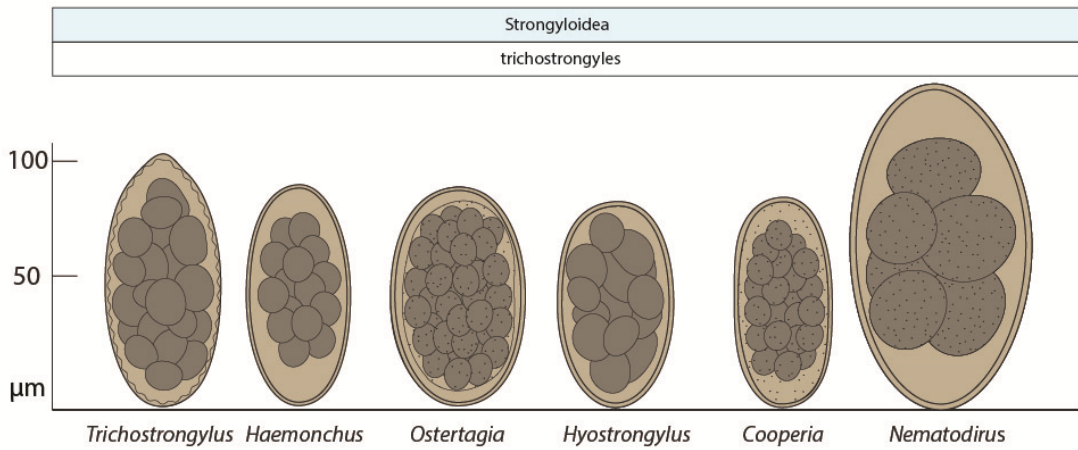


Dirofilaria

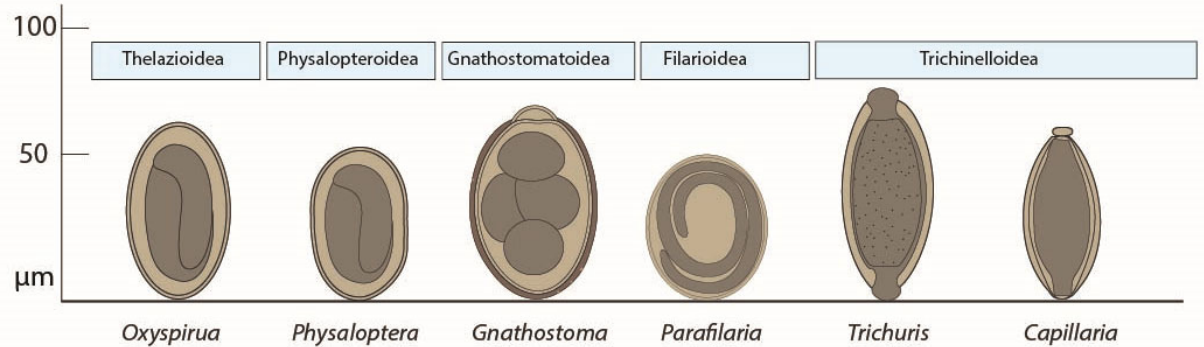
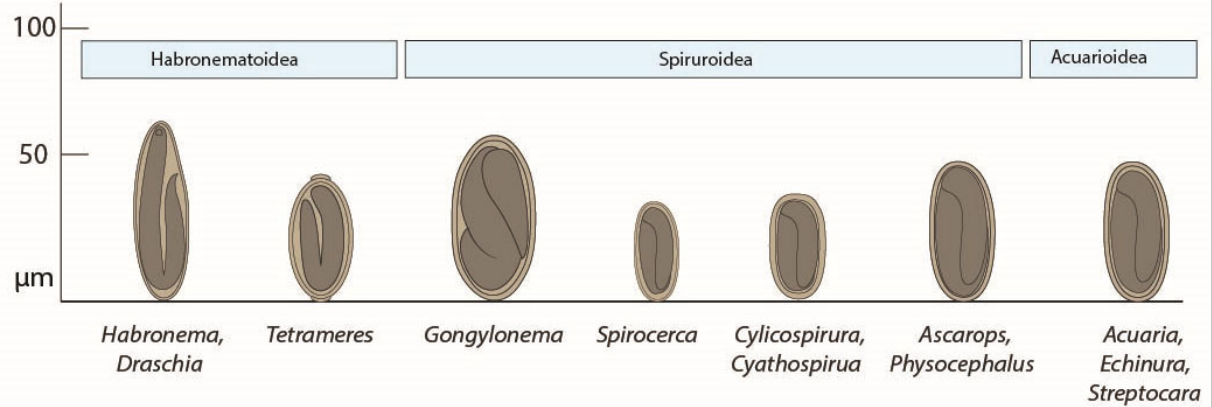
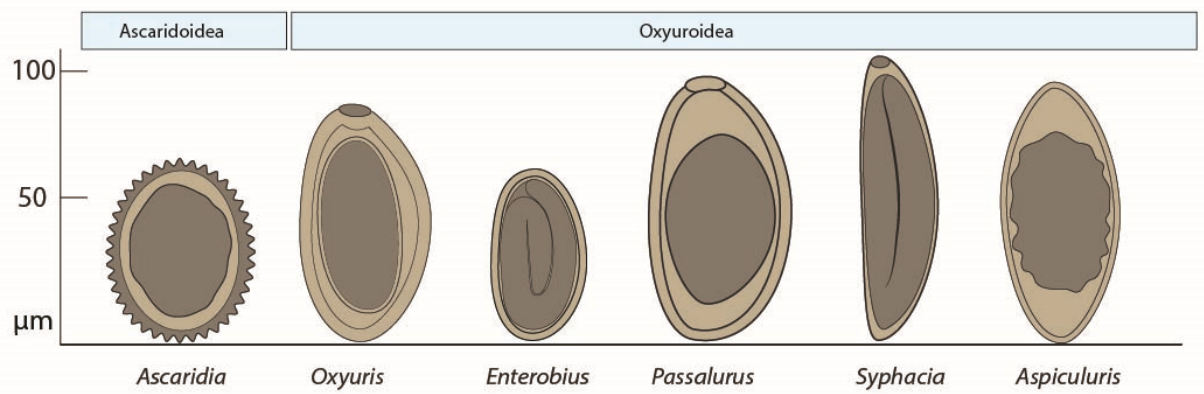
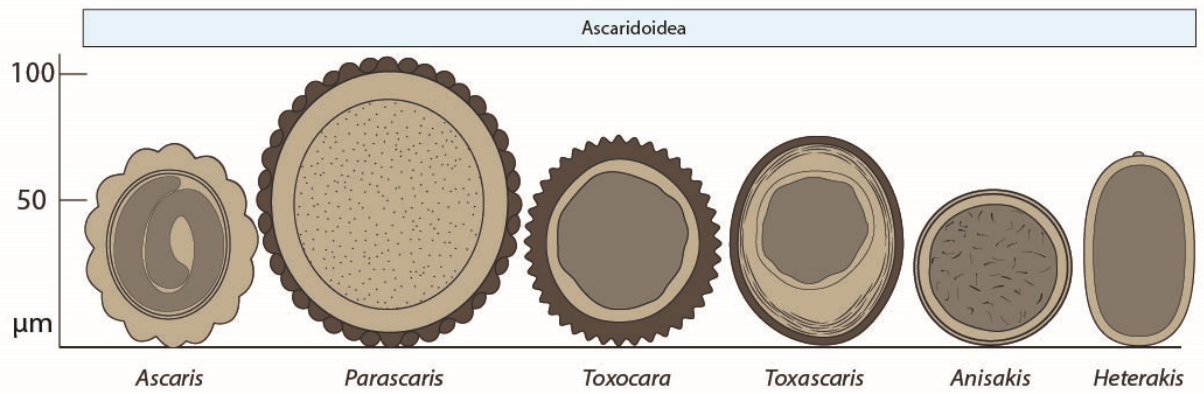


Dracunculus

Nematode eggs 1

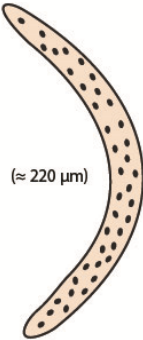


Nematode eggs 2



Nematode microfilariae

Filarioidea



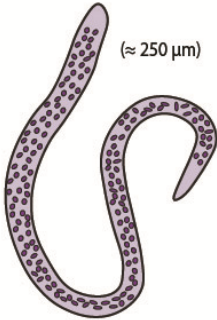
($\approx 220 \mu\text{m}$)

Parafilaria



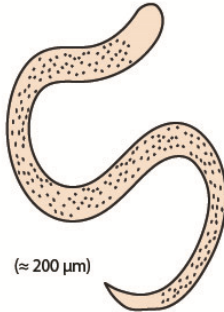
($\approx 100 \mu\text{m}$)

Stephanofilaria



($\approx 250 \mu\text{m}$)

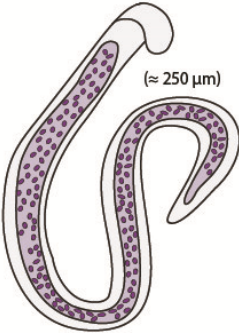
Onchocerca



($\approx 200 \mu\text{m}$)

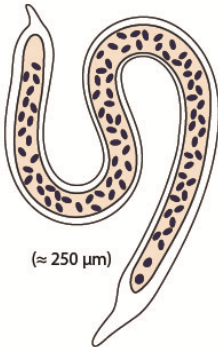
Mansonella

Filarioidea



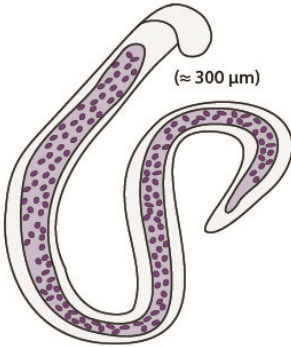
($\approx 250 \mu\text{m}$)

Wuchereria



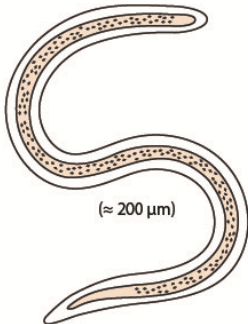
($\approx 250 \mu\text{m}$)

Brugia



($\approx 300 \mu\text{m}$)

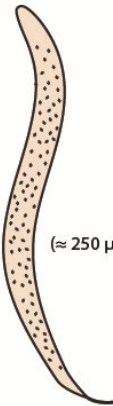
Loa



($\approx 200 \mu\text{m}$)

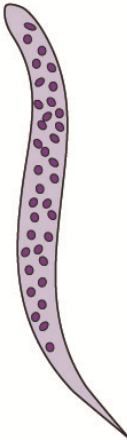
Setaria

Filarioidea



($\approx 250 \mu\text{m}$)

*Dipetalonema/
Acanthocheilonema*



Dirofilaria