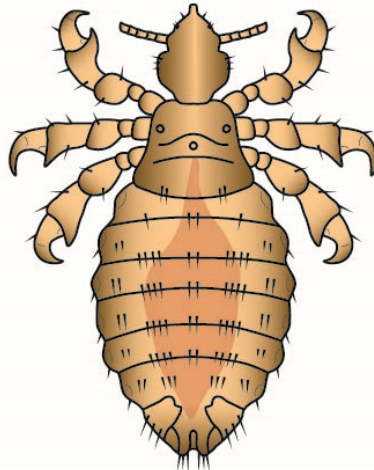


Phthiraptera: Anoplura

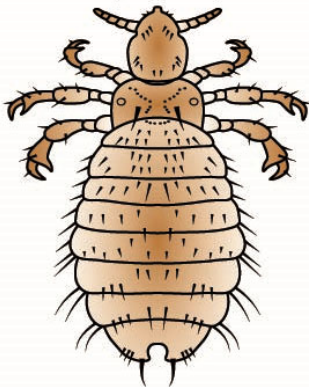
Haematopinus

adult (dorsal)
(~ 5 mm)



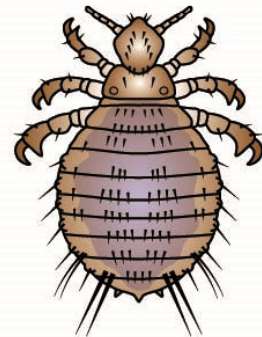
Linognathus

adult (dorsal)
(~ 3 mm)



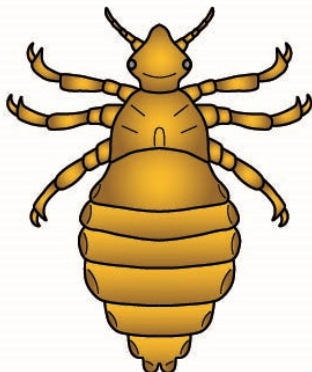
Solenopotes

adult (dorsal)
(~ 1.8 mm)



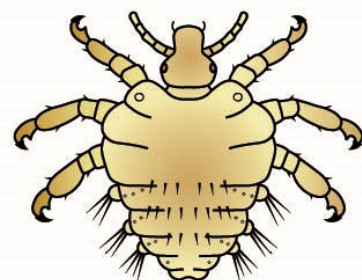
Pediculus

adult (dorsal)
(~ 3 mm)



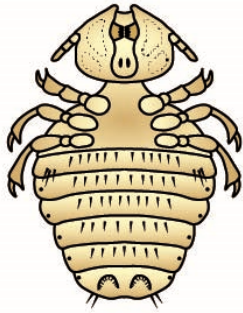
Pthirus

adult (dorsal)
(~ 2 mm)

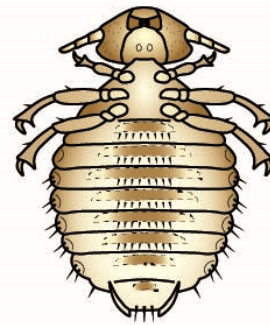


Phthiraptera: Ischnocera (chewing lice)

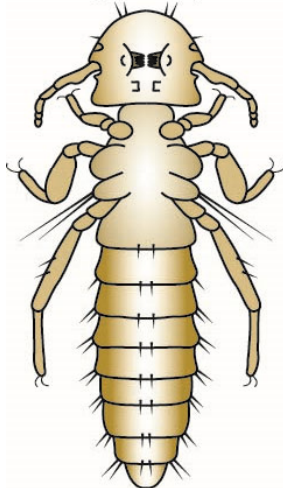
Trichodectes
adult (ventral)
(~ 2 mm)



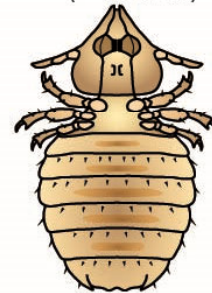
Bovicola
adult (ventral)
(~ 2 mm)



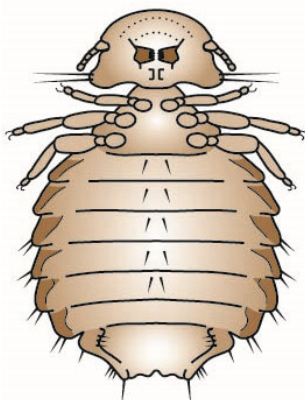
Lipeurus
adult (ventral)
(~ 4 mm)



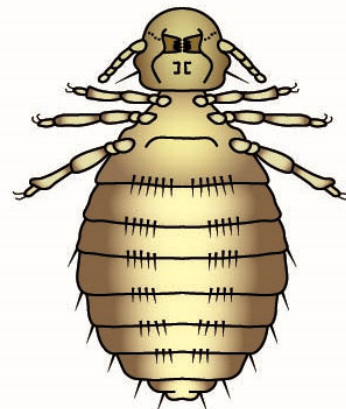
Felicola
adult (ventral)
(~ 1.5 mm)



Goniodes
adult (ventral)
(~ 3 mm)

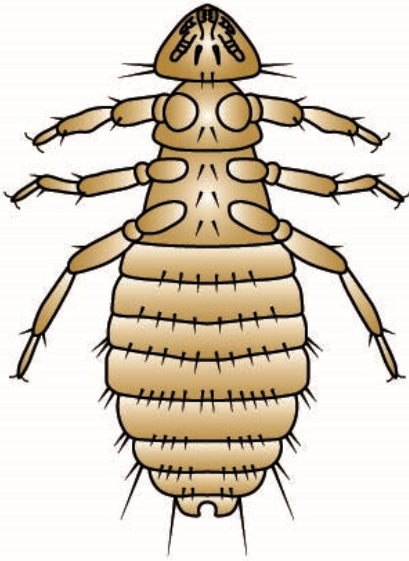


Cuclotogaster
adult (ventral)
(~ 3 mm)

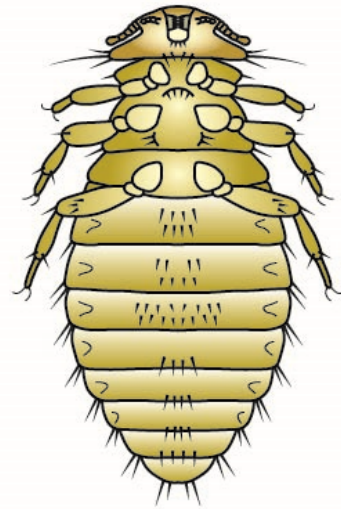


Phthiraptera: Amblycera (chewing lice)

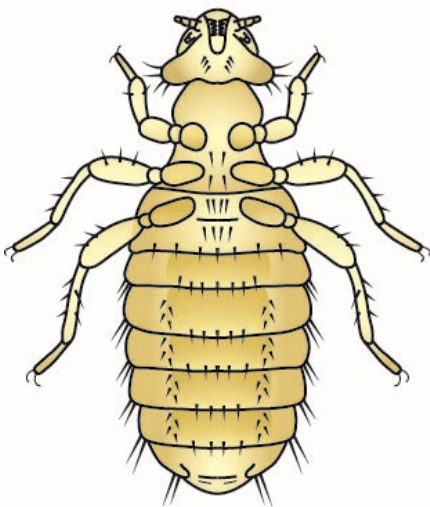
Heterodoxus
adult (ventral)
(~ 2.5 mm)



Menopon
adult (ventral)
(~ 2 mm)



Menacanthus
adult (ventral)
(~ 2 mm)



Holomenopon
adult (ventral)
(~ 2 mm)

