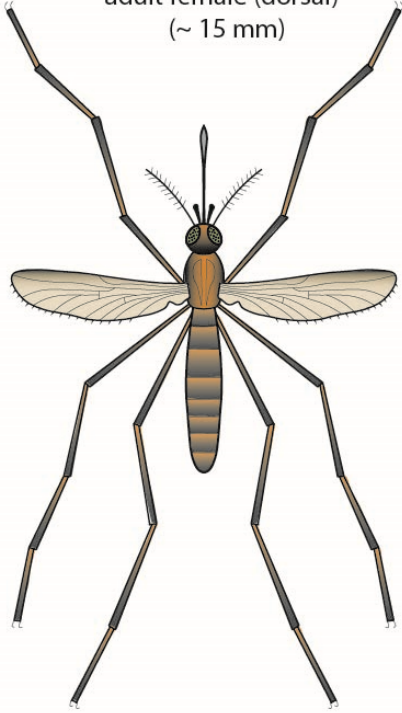
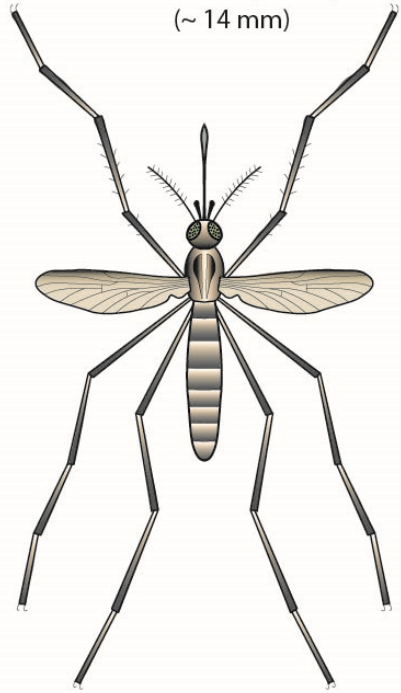


Diptera: Nematocera: Culicidae (mosquitoes)

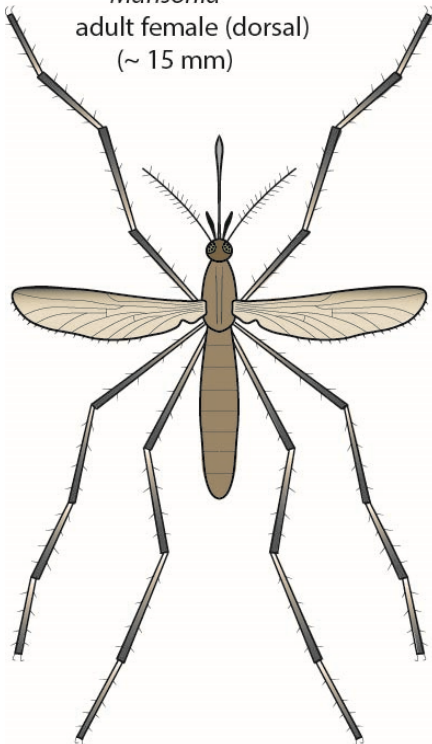
Culex
adult female (dorsal)
(~ 15 mm)



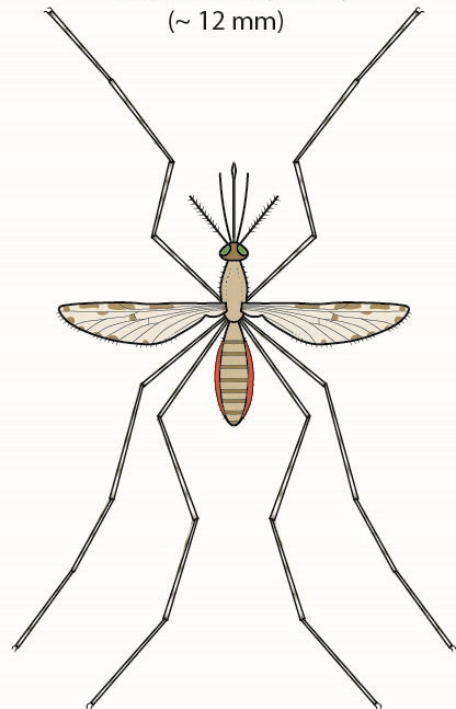
Aedes
adult female (dorsal)
(~ 14 mm)



Mansonia
adult female (dorsal)
(~ 15 mm)



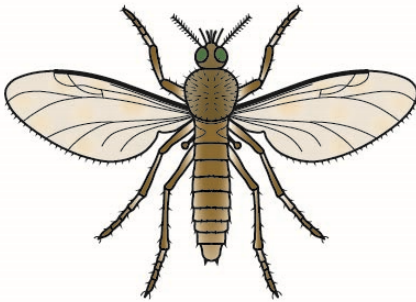
Anopheles
adult female (dorsal)
(~ 12 mm)



Diptera: Nematocera: miscellaneous families (midges, black flies, sand flies)

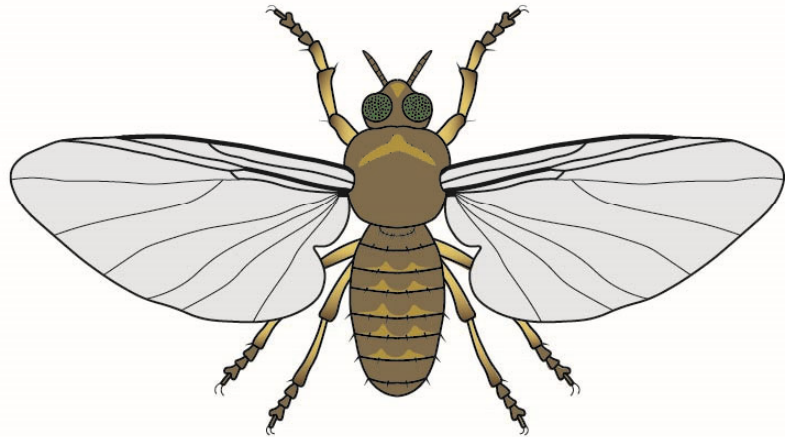
Culicoides

adult female (dorsal)
(~ 2 mm)



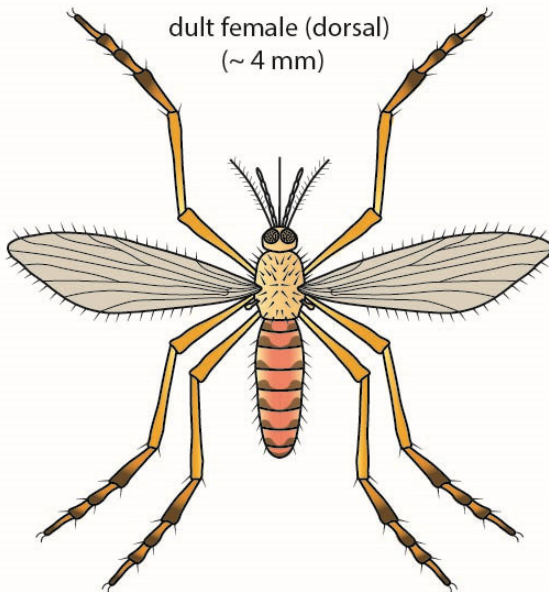
Simulium

adult female (dorsal)
(~ 4 mm)



Phlebotomus

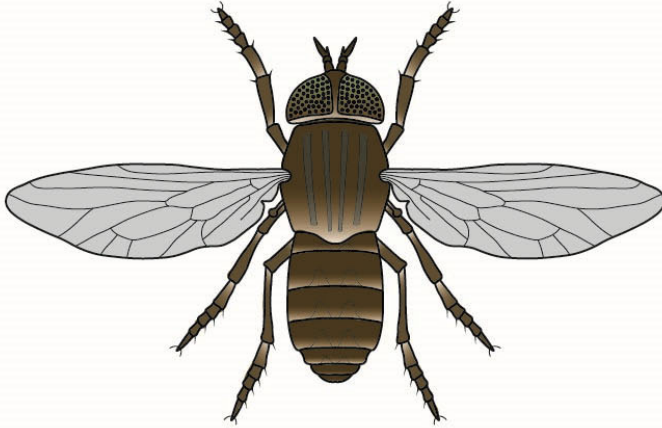
adult female (dorsal)
(~ 4 mm)



Diptera: Tabanomorpha

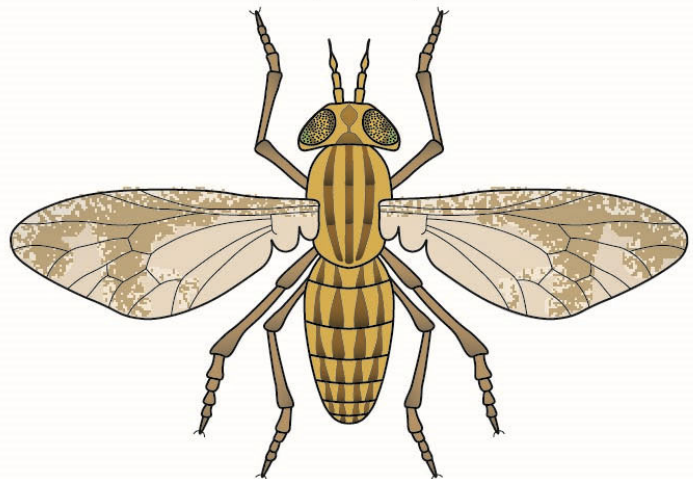
Tabanus

adult female (dorsal)
(~ 30 mm)



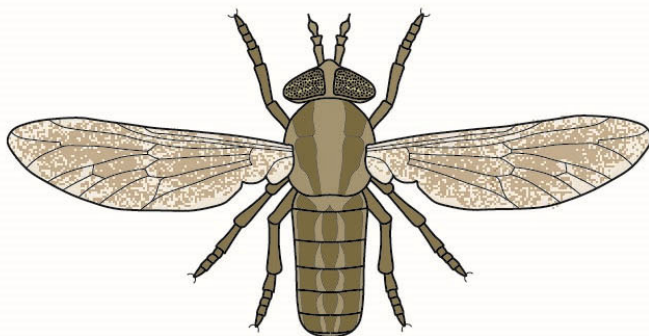
Chrysops

adult female (dorsal)
(~ 30 mm)



Haematopota

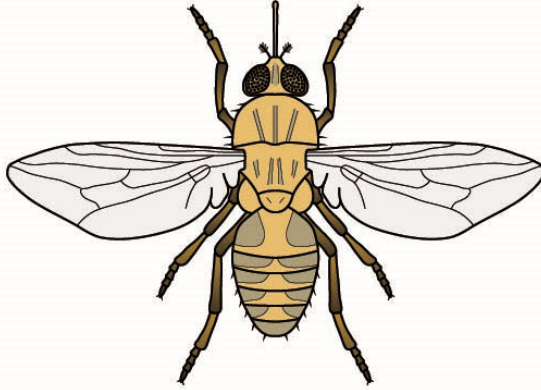
adult female (dorsal)
(~ 30 mm)



Diptera: Muscomorpha 1

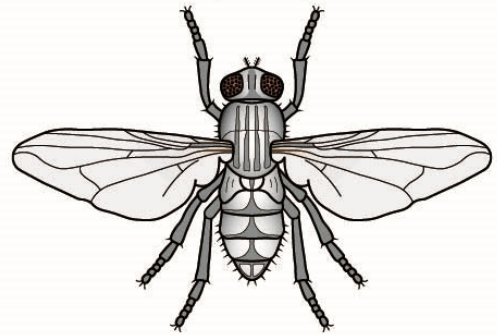
Glossina

adult female (dorsal)
(~ 10 mm)



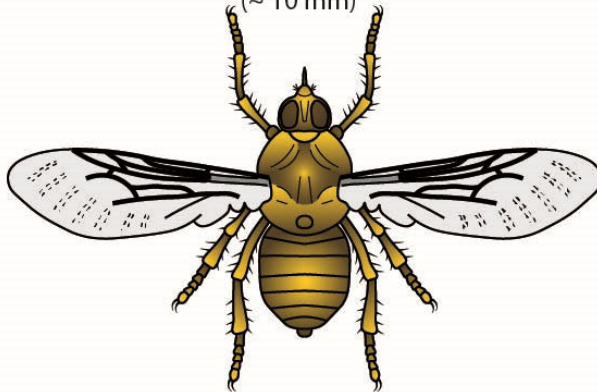
Musca

adult female (dorsal)
(~ 8 mm)



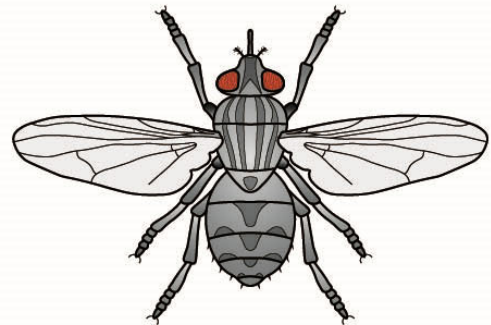
Hippobosca

adult female (dorsal)
(~ 10 mm)



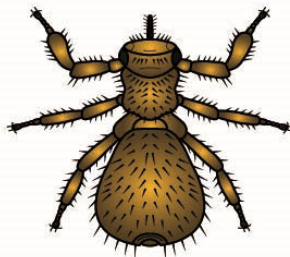
Stomoxys

adult female (dorsal)
(~ 8 mm)



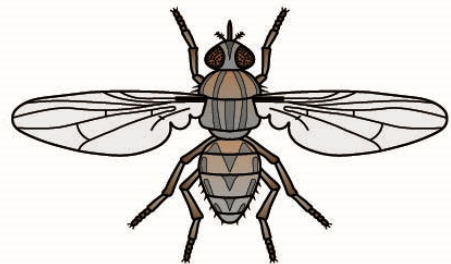
Melophagus

adult female (dorsal)
(~ 6 mm)



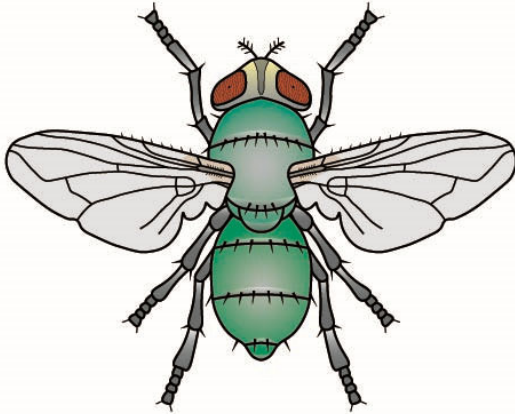
Haematobia

adult female (dorsal)
(~ 5 mm)

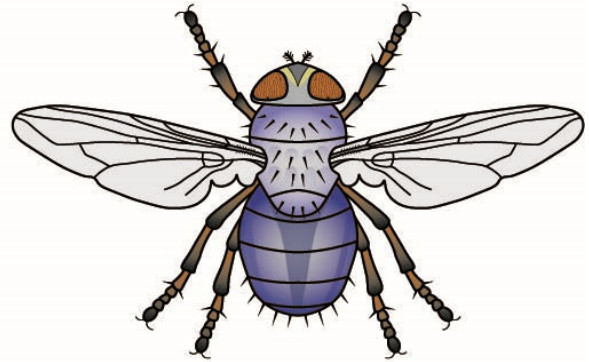


Diptera: Muscomorpha 2

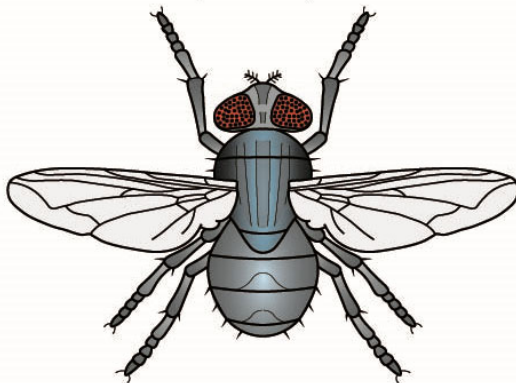
Lucilia
adult female (dorsal)
(~ 12 mm)



Calliphora
adult female (dorsal)
(~ 12 mm)



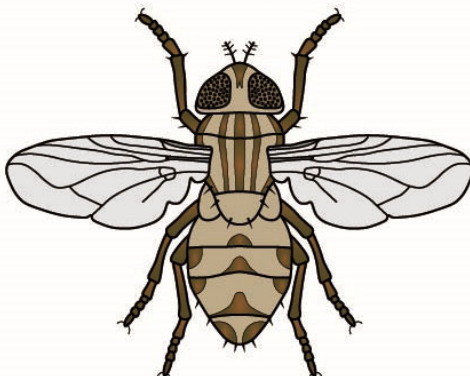
Cochliomyia
adult female (dorsal)
(~ 10 mm)



Chrysomya
adult female (dorsal)
(~ 10 mm)



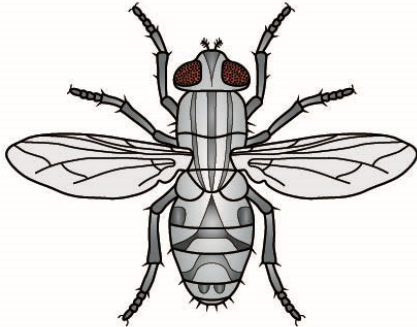
Cordylobia
adult female (dorsal)
(~ 8 mm)



Diptera: Muscomorpha 3

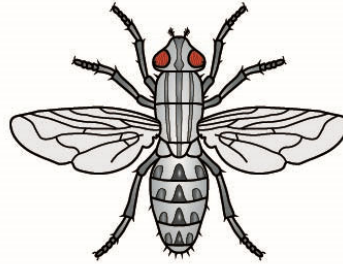
Sarcophaga

adult female (dorsal)
(~ 20 mm)



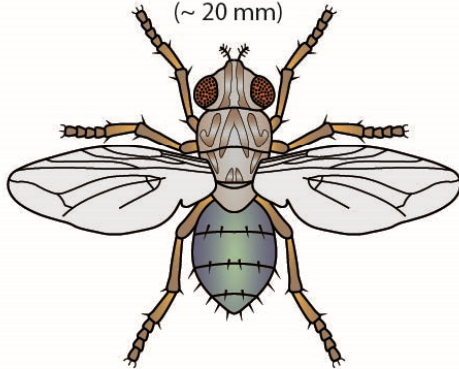
Wohlfahrtia

adult female (dorsal)
(~ 10 mm)



Dermatobia

adult female (dorsal)
(~ 20 mm)



Oestrus

adult female (dorsal)
(~ 15 mm)



Hypoderma

adult female (dorsal)
(~ 15 mm)



Gasterophilus

adult female (dorsal)
(~ 15 mm)

