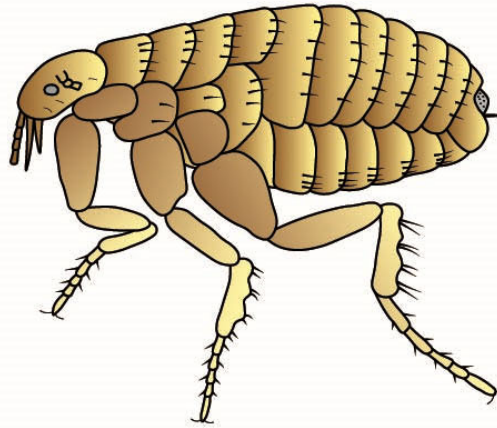
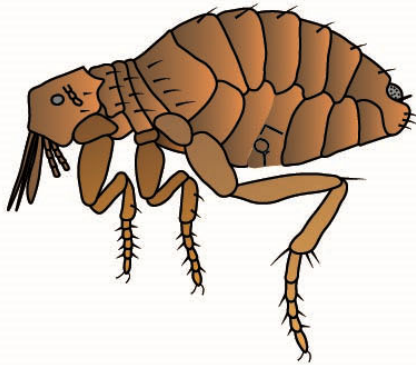


## Siphonaptera: Pulicidae

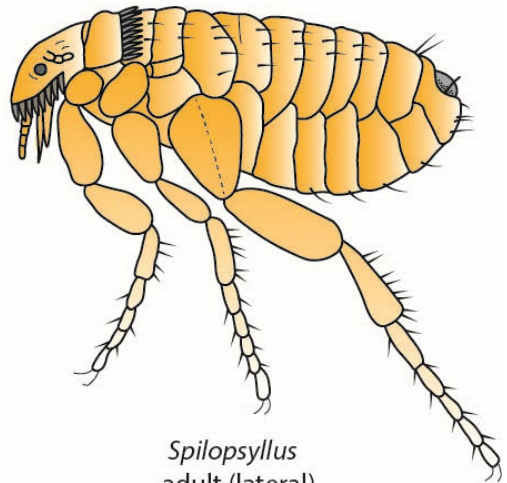
*Pulex*  
adult (lateral)  
(~ 3 mm)



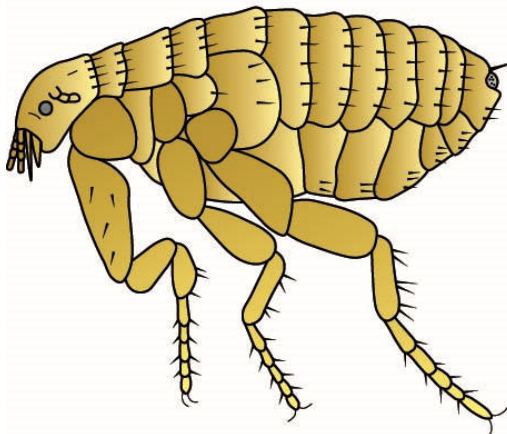
*Echidnophaga*  
adult (lateral)  
(~ 2 mm)



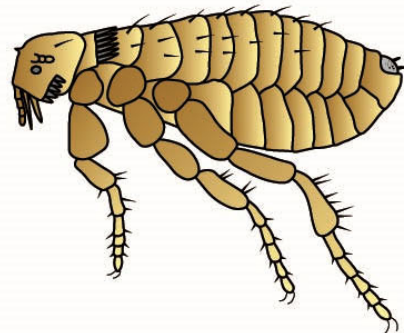
*Ctenocephalides*  
adult (lateral)  
(~ 3.5 mm)



*Xenopsylla*  
adult (lateral)  
(~ 3.5 mm)

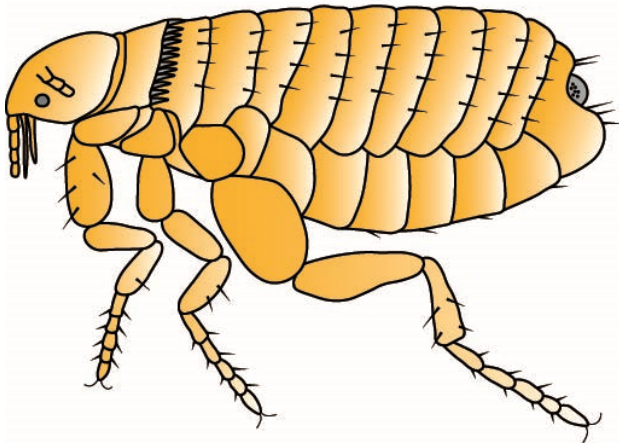


*Spilopsyllus*  
adult (lateral)  
(~ 2 mm)

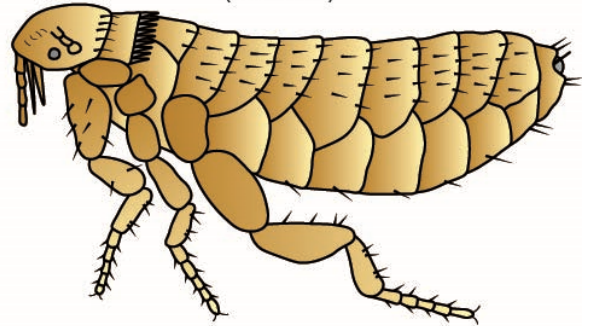


## Siphonaptera: Ceratophyllidae

*Ceratophyllus*  
adult (lateral)  
(~ 4 mm)

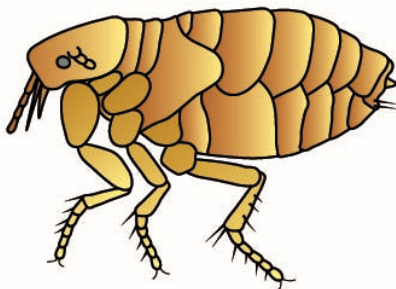


*Nosophyllus*  
adult (lateral)  
(~ 4 mm)



## Siphonaptera: Tungidae

adult female (lateral)  
(~ 1 mm)



*Tunga*

engorged female (lateral)  
(~ 5 mm)

