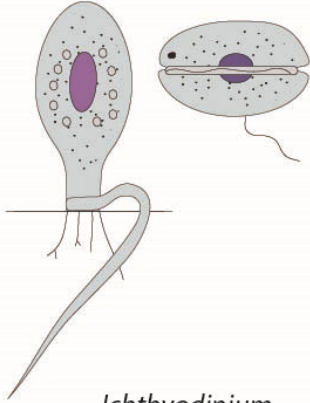


Dinoflagellates

Amyloodinium

trophont
($< 150 \mu\text{m}$)

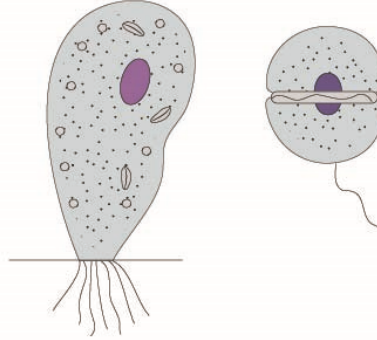
dinospore
($5-20 \mu\text{m}$)



Piscinoodinium

trophont
($< 160 \mu\text{m}$)

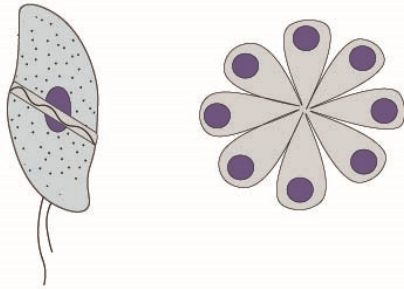
dinospore
($5-20 \mu\text{m}$)



Ichthyodinium

dinospore
($8-12 \mu\text{m}$)

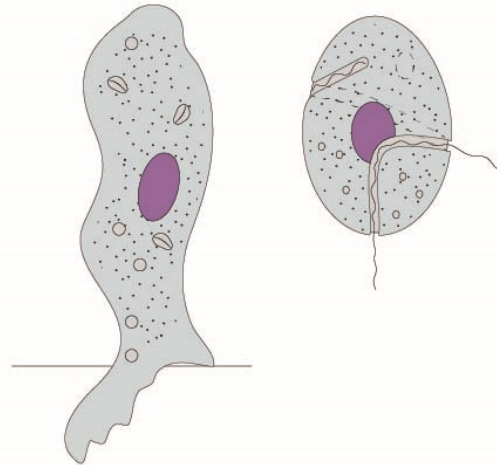
schizonts
($20-40 \mu\text{m}$)



Crepidoodinium

trophont
($< 700 \mu\text{m}$)

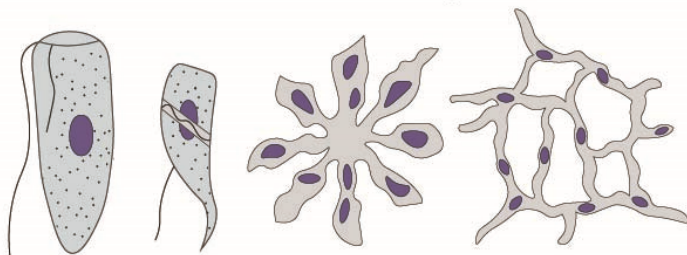
dinospore
($5-20 \mu\text{m}$)



Haematodinium

dinospores
($7-14 \mu\text{m}$)

multinucleate plasmodia
($6-200 \mu\text{m}$)

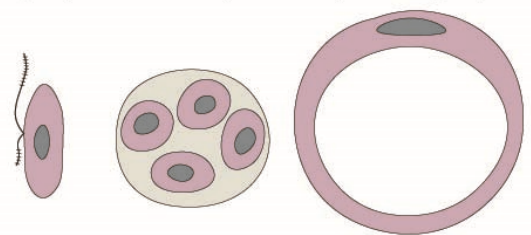


incertae sedis: Perkinsus

zoospore
($4-6 \mu\text{m}$)

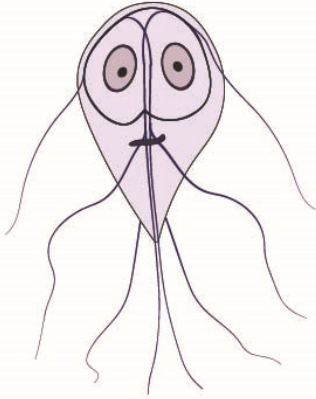
schizont
($15-100 \mu\text{m}$)

zoosporangia
($30-200 \mu\text{m}$)

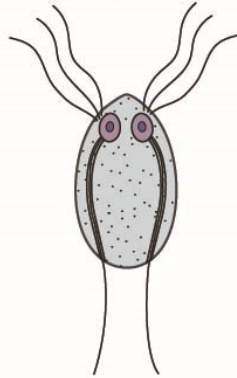


Diplomonad flagellates

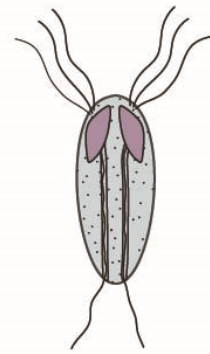
Giardia
trophozoite (10-30 μm)



Hexamita
trophozoite (3-22 μm)

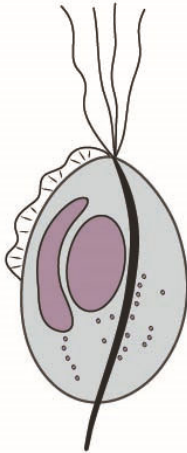


Spironucleus
trophozoite (5-20 μm)

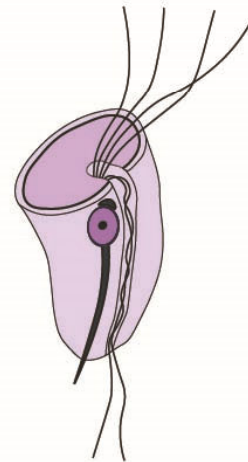


Parabasalid flagellates

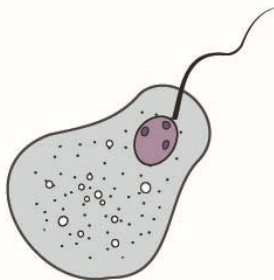
Trichomonas
trophozoite (7-32 μm)



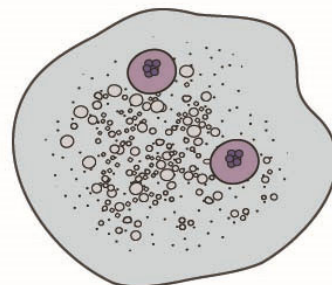
Cochlosoma
trophozoite (5-20 μm)



Histomonas
trophozoite (5-30 μm)



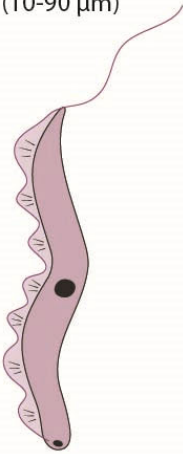
Dientamoeba
trophozoite (4-40 μm)



Kinetoplastid flagellates

Trypanosoma

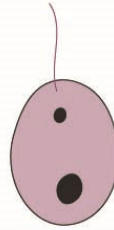
trypomastigote
(10-90 μm)



epimastigote
(5-20 μm)



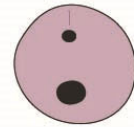
promastigote
(2-10 μm)



sphaeromastigote
(2-5 μm)

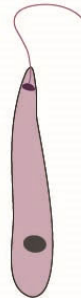


amastigote
(2-5 μm)

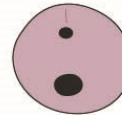


Leishmania

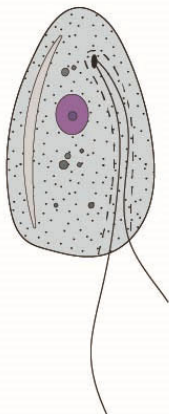
promastigote
(5-20 μm)



amastigote
(2-5 μm)



Ichthyobodo
trophozoite (5-20 μm)



Cryptobia
trophozoite (5-23 μm)



Trypanoplasma
trophozoite (10-30 μm)

