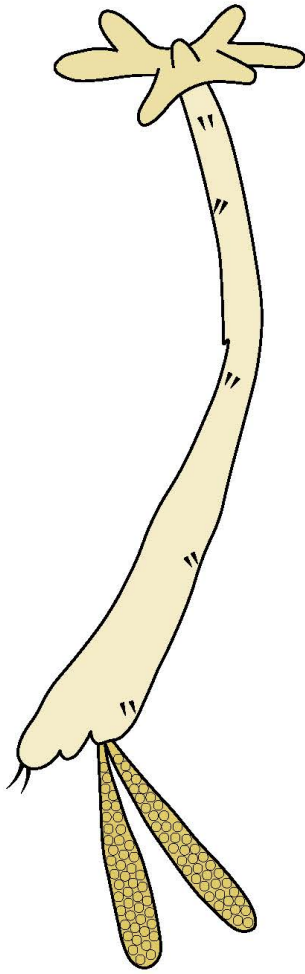
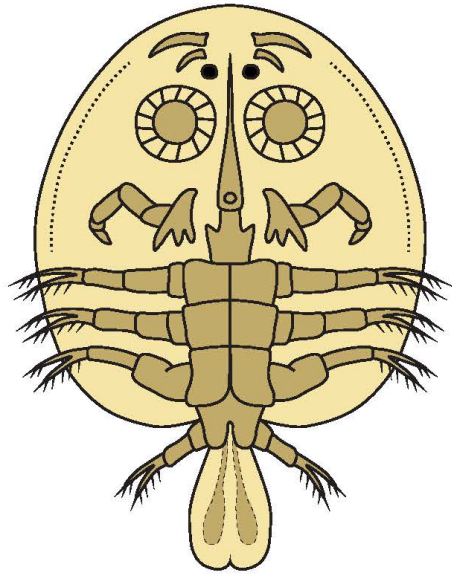


Crustacea

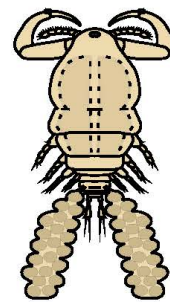
Lernaea
adult female
(~ 15 mm)



Argulus
adult (ventral)
(~ 10 mm)



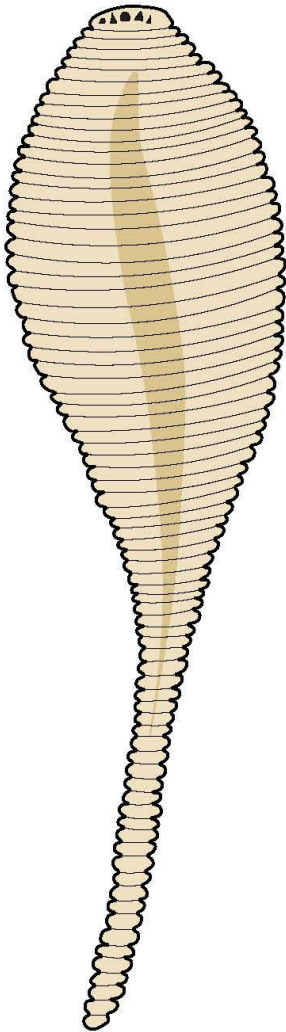
Ergasilus
adult female (dorsal)
(~ 1.5 mm)



Pentastomes

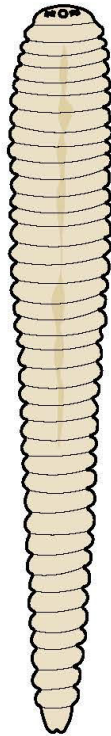
Linguatula

adult (ventral)
(~ 100 mm)



Porocephalus

adult (ventral)
female ~60 mm
male ~ 30 mm



Armillifer

adult (ventral)
(female ~ 90 mm)
(male ~ 30 mm)

