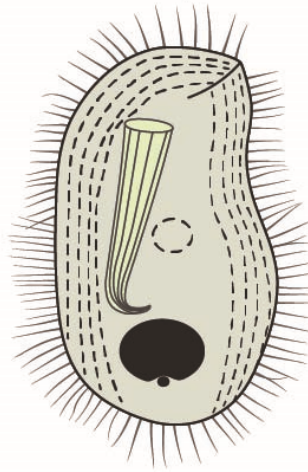


# Ciliates

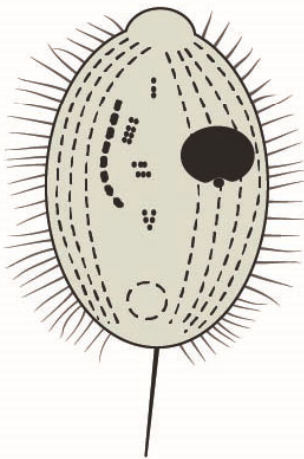
*Balantidium*  
(30-150  $\mu\text{m}$ )



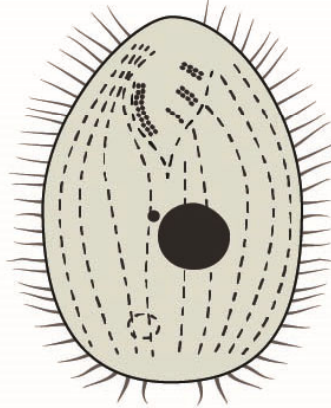
*Chilodonella*  
(27-85  $\mu\text{m}$ )



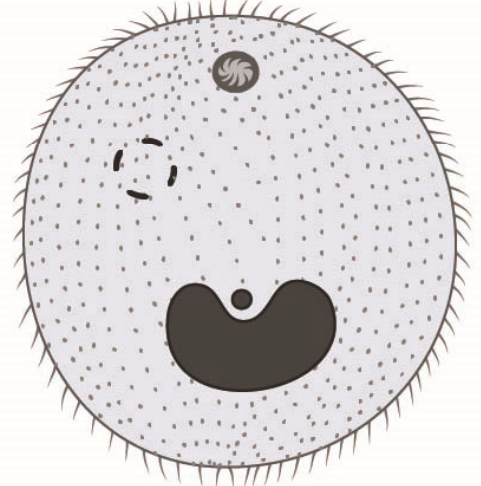
*Uronema*  
(20-50  $\mu\text{m}$ )



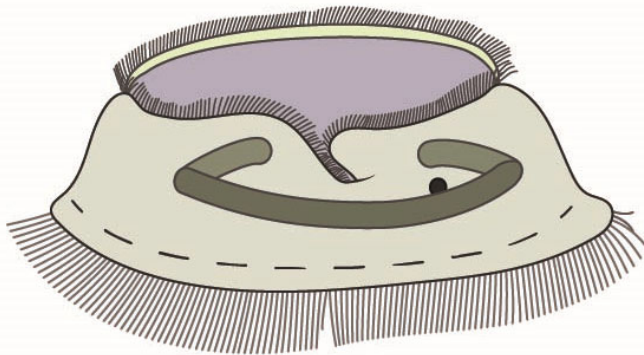
*Tetrahymena*  
(10-100  $\mu\text{m}$ )



*Ichthyophthirius*  
(30-1500  $\mu\text{m}$ )



*Trichodina*  
(10-150  $\mu\text{m}$ )



peritrichs  
(10-80  $\mu\text{m}$ )

