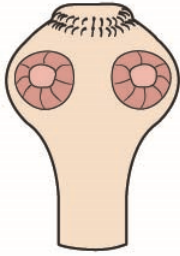
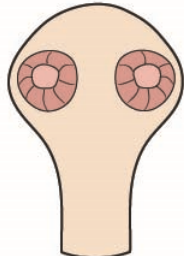


# Cestode scolices

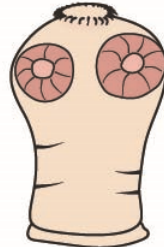
## Cyclophyllidea



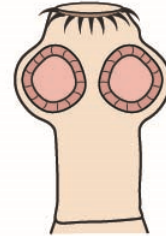
*Taenia solium*



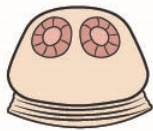
*Taenia saginata*



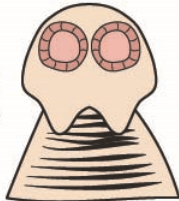
*Taenia multiceps*



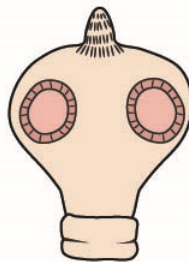
*Echinococcus*



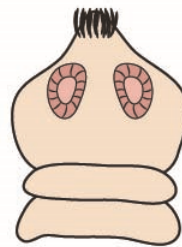
*Anoplocephala*



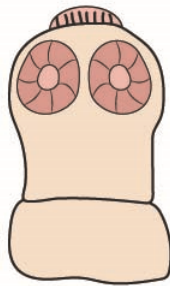
*Dipylidium*



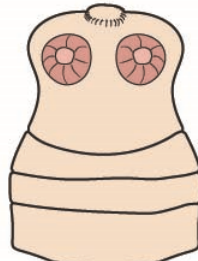
*Amoebotaenia*



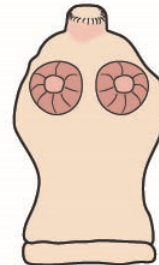
*Choanotaenia*



*Davainea*



*Raillietina*



*Hymenolepis*

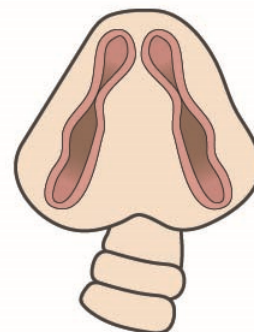
## Pseudophyllidea



*Dipyllobothrium*

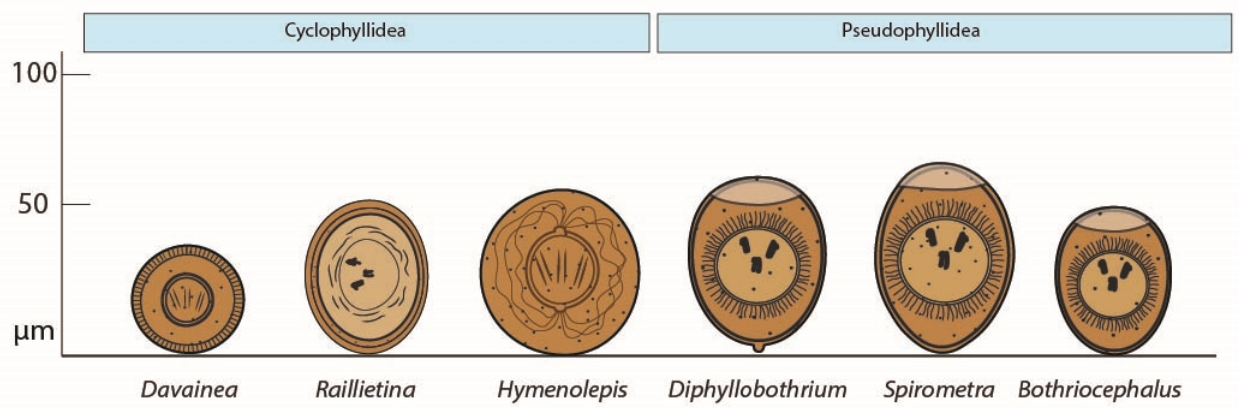
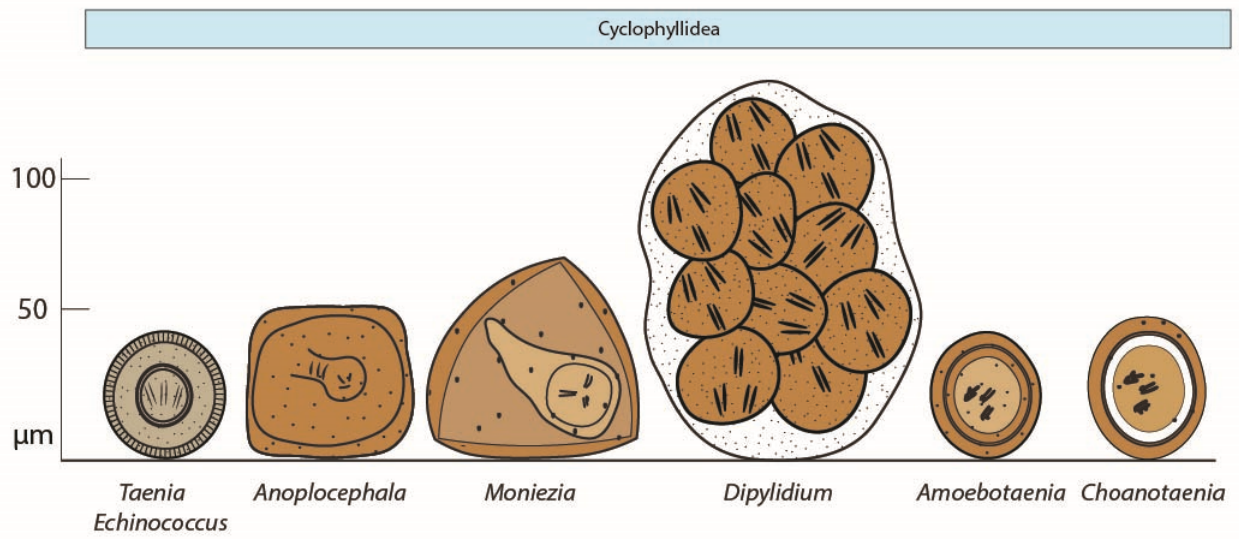


*Spirometra*



*Bothriocephalus*

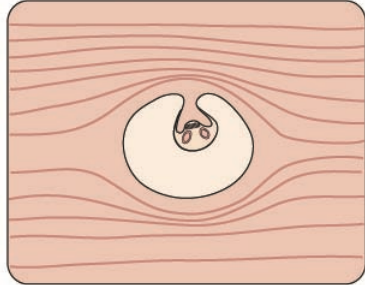
# Cestode eggs



# Metacestodes

Cyclophyllidea

cysticercus



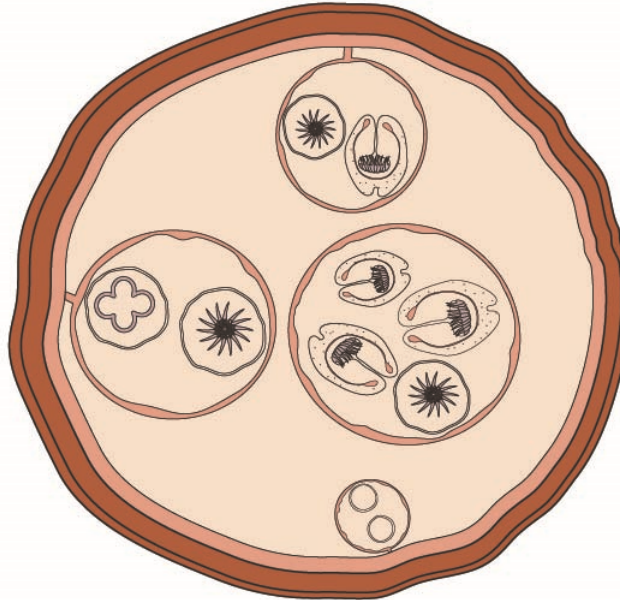
*Taenia*

cysticercoid



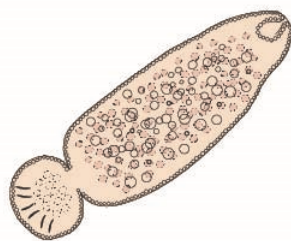
*Anoplocephala, Moniezia, Dipylidium, Amoebotaenia, Choanotaenia, Davainea, Raillietina, Hymenolepis*

hydatid cyst



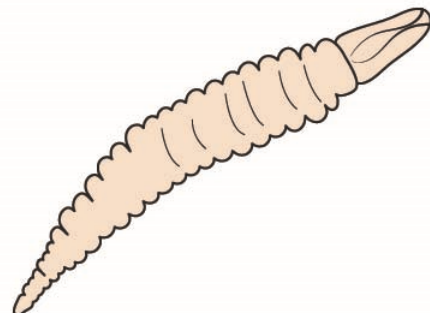
*Echinococcus*

proceroid



*Diphyllobothrium, Spirometra*

plerocercoid (spargana)



*Diphyllobothrium, Spirometra, Bothriocephalus*