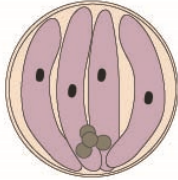


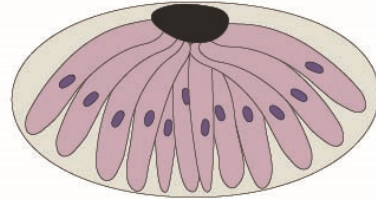
Apicomplexa

enteric oocysts

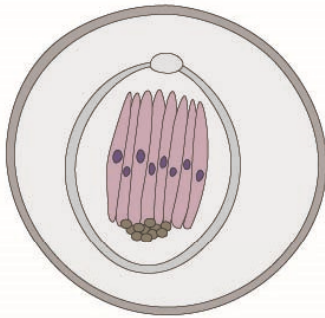
Cryptosporidium
(5-7 μm)



Klossiella
(18-24 μm)



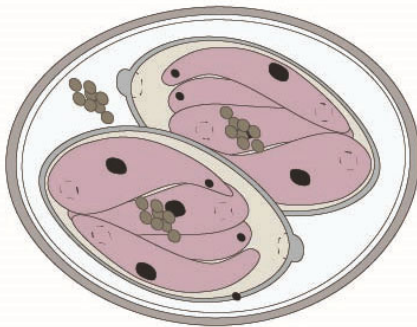
Caryospora
(10-43 μm)



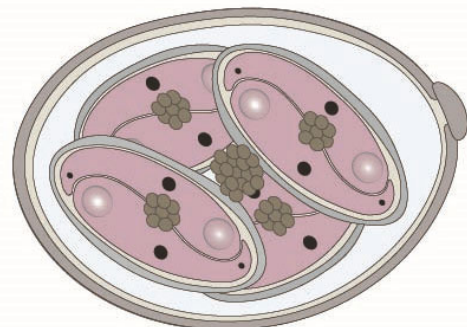
Cyclospora
(7-10 μm)



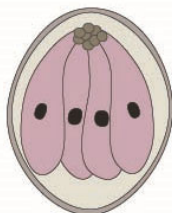
Isospora
(10-40 μm)



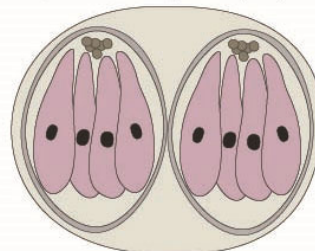
Eimeria
(10-40 μm)



Sarcocystis
(13-19 μm)



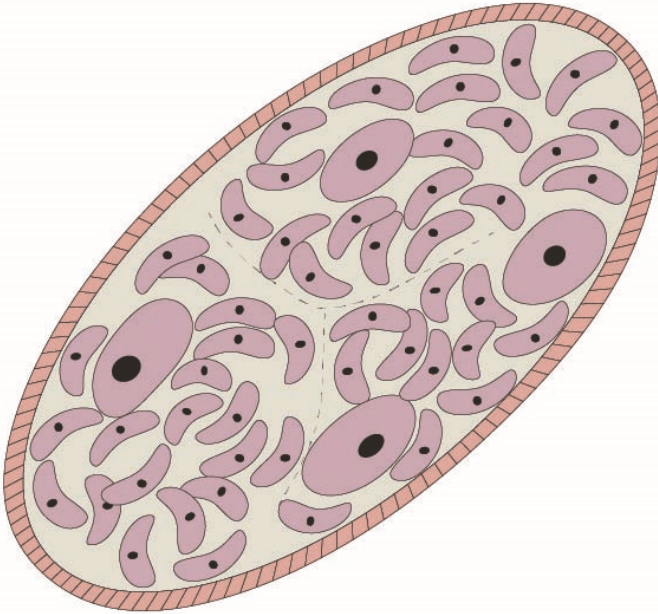
Toxoplasma/Hammondia/Neospora
/Besnoitia (9-17 μm)



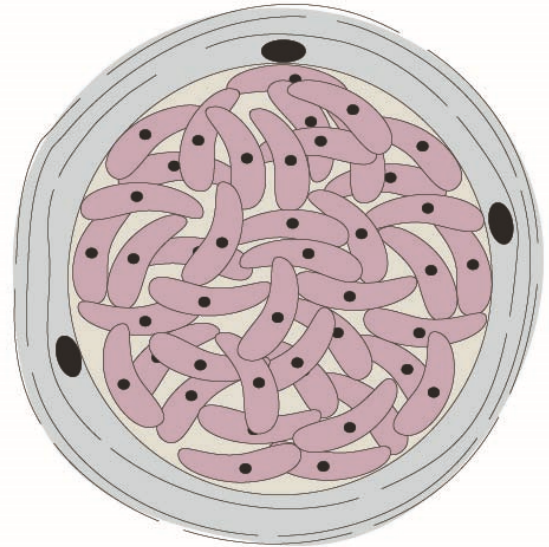
Apicomplexa

tissue cysts

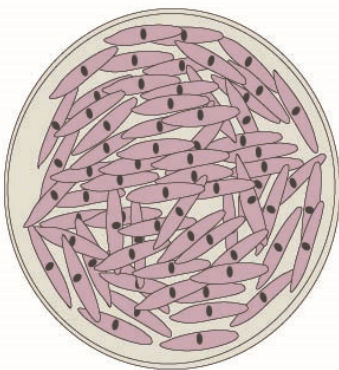
Sarcocystis
(30 μ m - 1 cm)



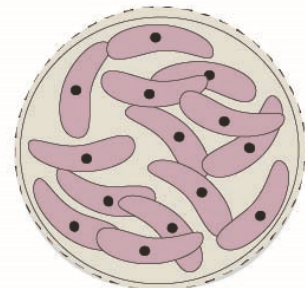
Besnoitia
(200 μ m - 5 mm)



Toxoplasma/Hammondia
(10-340 μ m)



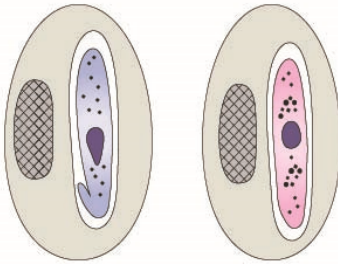
Neospora
(10-100 μ m)



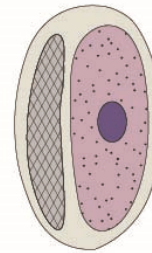
Apicomplexa

haematozoa

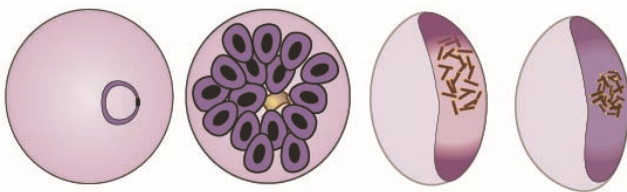
Haemogregarina
(8-15 μm)



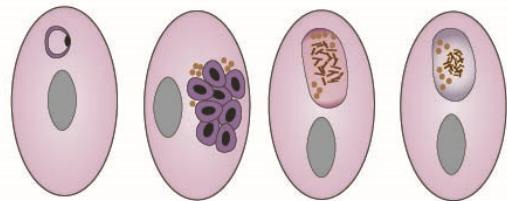
Hepatozoon
(9-12 μm)



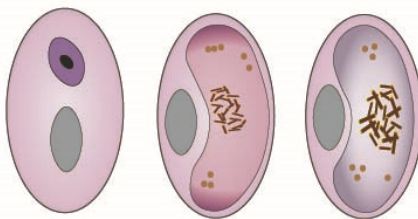
Plasmodium (mammal)
(1-14 μm)



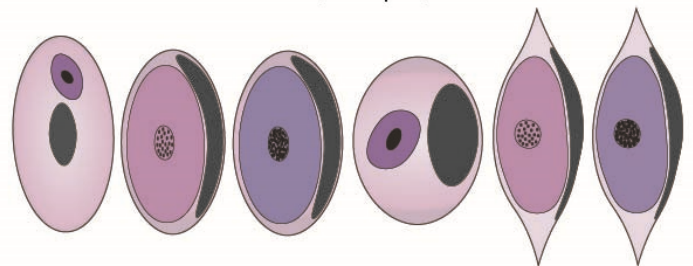
Plasmodium (non-mammalian)
(1-10 μm)



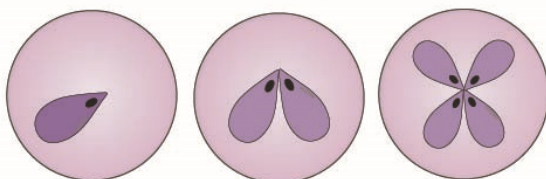
Haemoproteus
(5-24 μm)



Leucocytozoon
(2-22 μm)



Babesia
(1-4 μm)



Theileria
(1-25 μm)

