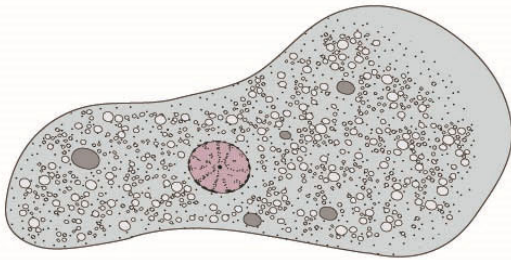


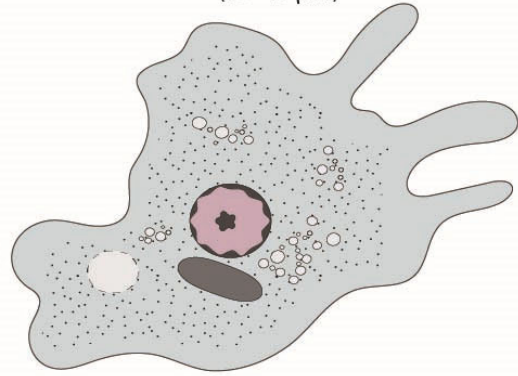
Amoebae

trophozoites

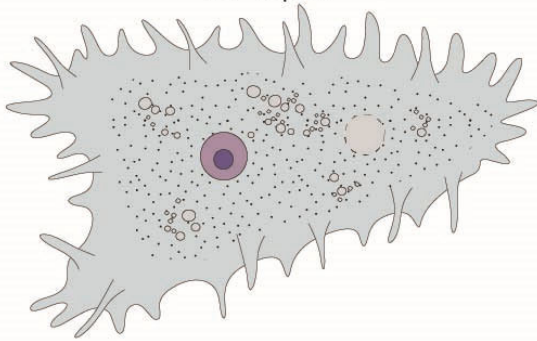
Entamoeba
(10-40 μm)



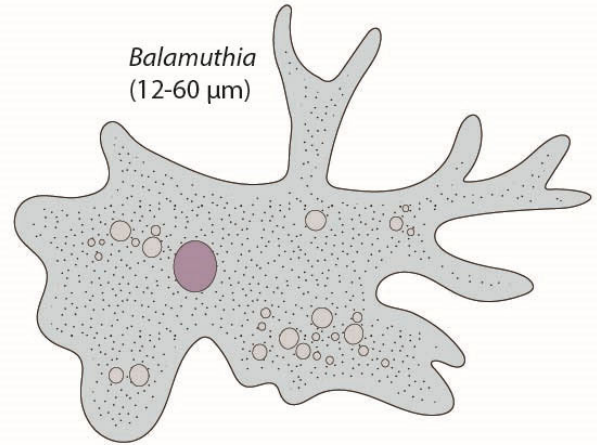
Paramoeba
(15-40 μm)



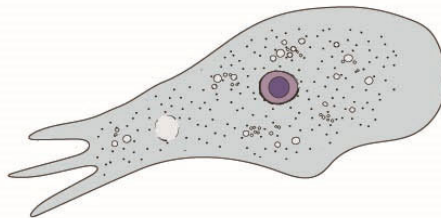
Acanthamoeba
(15-40 μm)



Balamuthia
(12-60 μm)



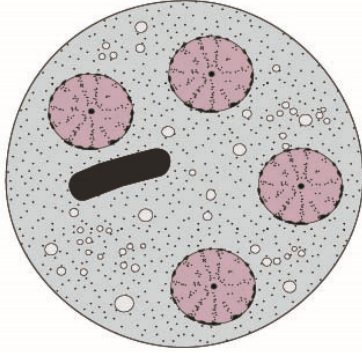
Naegleria
(10-15 μm)



Amoebae

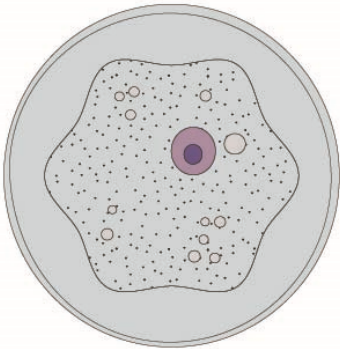
cysts

Entamoeba
(10-16 μm)

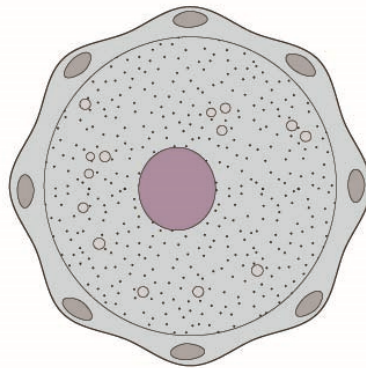


Paramoeba
no cyst formation

Acanthamoeba
(10-20 μm)



Balamuthia
(6-30 μm)



Naegleria
(10-20 μm)

