

Eimeria

(protist: apicomplexan)

Overview

Protists are single-celled organisms with membrane-bound nuclei (eukaryotes). One protistan supergroup known as SAR comprises the Stramenopiles (with heterokont flagella), Alveolata (with cortical alveoli) and Rhizaria (with fine pseudopodia). Three major alveolate groups are recognized: ciliates, apicomplexans and dinoflagellates. Apicomplexan cells possess a distinctive apical complex of organelles, comprising a conoid, polar ring, rhoptries, micronemes and subpellicular microtubules, which facilitate entry into host cells as they are obligate intracellular parasites for most of their life-cycles. There are three main apicomplexan groups: gregarines, coccidia and haematozoa. Coccidia form non-motile environmentally-resistant oocysts that contain infective sporozoites usually confined within secondary spores (sporocysts). The enteric coccidia are monoxenous (1-host) parasites in the digestive tracts of vertebrates. They undergo three sequential developmental stages: endogenous multiplication by asexual merogony (= schizogony) followed by sexual gamogony (male microgametes fertilize female macrogametes) producing oocysts which are excreted and undergo asexual sporogony (sporozoite formation). *Eimeria* oocysts typically contain four sporocysts each with two sporozoites (1:4:2 configuration). Infections are prevalent in birds (esp. fowl), reptiles (snakes and lizards), mammals (esp. ruminants) and fish. Many species have been associated with clinical disease (coccidiosis) characterized by gastrointestinal disturbances and sometimes extraintestinal tissue lesions.

Classification:

Domain: Eukaryota (membrane-bound nucleus)
Supergroup: SAR (Stramenopiles + Alveolata + Rhizaria)
Group: Alveolata (with cortical alveoli)
Phylum: Apicomplexa (with apical complex, all parasitic, sexual development (gamogony))
Class: Coccidiomorpha [Coccidiasida] (with conoid)
Subclass: Coccidia [Coccidiasina] (small intracellular gamonts)
Order: Eucoccidiorida (cyclic merogony (schizogony), gamogony, sporogony)
Suborder: Eimeriorina (no syzygy, many microgametes)
Family: Eimeriidae (monoxenous, endogenous intracellular merogony and gamogony, exogenous sporogony)
Genus: *Eimeria* (parasitic in vertebrates, esp. herbivores)
Species: various species cause coccidiosis in their hosts

Parasite biodiversity and host range: Protists are unicellular eukaryotes that move using undulipodia (flagella or cilia), pseudopodia (false-feet) or a unique gliding motion. Cells with different modes of locomotion do not form separate monophyletic assemblages as previously thought, but rather are distributed across several disparate supergroups (as evidenced by recent molecular phylogenetic analyses). One protistan supergroup known as SAR comprises the Stramenopiles (with heterokont flagella), Alveolata (with cortical alveoli) and Rhizaria (with fine pseudopodia). Three diverse alveolate groups are recognized: Ciliophora (with cilia), Dinoflagellata (with flagella) and Apicomplexa (with gliding motion, some also with flagellated microgametes). Over 4,000 species of Apicomplexa have been described as obligate parasites from vertebrate and invertebrate hosts. At some stage in their development, these possess unique cytoskeletal and membrane-bound organelles (conoid, rhoptries, micronemes, subpellicular microtubules) forming an apical complex that facilitates host cell invasion. Apicomplexans undergo cyclic development involving up to three different divisional processes: asexual merogony (schizogony) either by fission (splitting of maternal cell) or endogony (internal formation of daughter cells); gamogony involving formation of gametes (macrogametes = female, microgametes = male) which undergo fertilization to recombine by fusion (syngamy) with or without paired alignment (syzygy); and sporogony (formation of infective sporozoites).

Three main apicomplexan groups are recognized: haematozoa, gregarines, and coccidia. Haematozoa are small blood-borne parasites in vertebrates which complete their development in blood-sucking invertebrate vectors; with pleomorphic haemosporidia being transmitted by insects and pear-shaped piroplasms being transmitted by ticks. Gregarines are lumen-dwelling parasites that form large extracellular (sometimes septate) gamonts with an anterior holdfast organelle (mucron or epimerite) used to attach to the gut or body cavity of invertebrates. Coccidia are tissue-invading parasites that form small intracellular gamonts (lacking a mucron or epimerite) and most species undergo sexual reproduction by anisogamous fusion without syzygy forming non-motile resistant spores (oocysts) containing infective sporozoites usually confined within secondary spores (sporocysts). Three groups of coccidia are recognized: coelotrophiid coccidia in marine annelids; adeleid coccidia in marine and terrestrial animals (including blood parasites paradoxically known as 'haemogregarines' in reptiles and amphibians with leech or arthropod vectors); and eimeriid

coccidia in vertebrates. Many eimeriid coccidia are monoxenous gut parasites undergoing faecal-oral transmission, but some are heteroxenous alternating between enteric stages in predators and encysted stages in prey (there are also a few enigmatic 'haemococcidia' in the blood of reptiles and birds).

Higher taxonomy	Family	Genera	Hosts	Site	Transmission*	
Class: Gregarinomorpha (gregarines, trophonts with specialized attachment epimerite or mucron, syzygy)						
Subclass: Cryptogregaria (epicellular parasites of vertebrates with feeder organelle but lacking apicoplast)						
	Cryptosporidiidae (naked sporozoites)	<i>Cryptosporidium</i>	vertebrates	gut, lungs	direct (f-o)	
Class: Coccidiomorpha [Conoidasida] (with conoid)						
Subclass: Coccidia [Coccidiasina] (small intracellular gamonts)						
Order: Eucoccidiorida (cyclic merogony (schizogony), gamogony, sporogony)						
Suborder: Adeleina (syzygy, 1-4 microgametes)	Haemogregarinidae (ookinete, gamonts in blood cells, invertebrate vectors)	<i>Haemogregarina</i>	reptiles, amphibia, fish	tissues, blood	indirect (v-b)	
		<i>Hepatozoon</i>	mammals, reptiles	tissues, blood	indirect (v-b)	
	Klossiellidae (sporocysts)	<i>Klossiella</i>	mammals	kidney	direct (f-o)	
Suborder: Eimeriorina (no syzygy, >4 microgametes)	Eimeriidae (monoxenous, endogenous merogony and gamogony, exogenous sporogony)	<i>Caryospora</i>	birds, reptiles	gut	direct (f-o)	
		<i>Cyclospora</i>	mammals, reptiles	gut	direct (f-o)	
		<i>Isoospora</i>	birds, reptiles	gut	direct (f-o)	
		<i>Eimeria</i>	vertebrates	gut, tissues	direct (f-o)	
		<i>Epieimeria</i>	fish	gut	direct (f-o)	
		<i>Goussia</i>	fish	gut	direct (f-o)	
	Sarcocystidae (heteroxenous, 1:2:4 oocyst:sporocyst:sporozoite configuration)					
		subfamily Cystoisosporinae (monozoic cysts)	<i>Cystoisospora</i> (no Stieda bodies)	carnivores, omnivores	gut, tissues	direct (f-o), indirect (p-p)
		subfamily: Sarcocystinae (thick-walls, merozoites)	<i>Sarcocystis</i> (<i>Frenkelia</i>)	mammals, birds, reptiles	gut, muscles	indirect (p-p)
		subfamily: Toxoplasmatinae (thin-walled cysts without merozoites)	<i>Besnoitia</i>	mammals, reptiles	gut, tissues	indirect (p-p)
	<i>Hammondia</i>		mammals	gut, tissues	indirect (p-p)	
	<i>Neospora</i>		herbivores, dogs	gut, tissues	indirect (p-p)	
		<i>Toxoplasma</i>	vertebrates, cats	gut, tissues	indirect (p-p)	
Class: Aconoidasida (asexual stages without conoid)						
Subclass: Haematozoa (clade of vector-borne spore-forming haemo-protzoa)						
Order: Haemosporida (pleomorphic blood stages, insect vectors, motile ookinete)	Plasmodiidae (schizogony in tissues then blood cells, haemozoin pigment)	<i>Plasmodium</i>	mammals, birds, reptiles	liver, erythrocytes	indirect (v-b)	
	Haemoproteidae (schizogony in tissues, haemozoin pigment)	<i>Haemoproteus</i>	birds	endothelia, erythrocytes	indirect (v-b)	
	Leucocytozoidae (schizogony in tissues, no haemozoin pigment)	<i>Leucocytozoon</i> (<i>Akiba</i>)	birds	tissues, leucocytes	indirect (v-b)	
Order: Piroplasmorida (pear-shaped blood stages, tick vectors)	Babesiidae (merogony in erythrocytes, trans-stadial + trans-ovarian transmission)	<i>Babesia</i>	mammals	erythrocytes	indirect (v-b)	
	Theileriidae (merogony in leucocytes, trans-stadial transmission in ticks)	<i>Theileria</i>	ruminants	leucocytes, erythrocytes	indirect (v-b)	

* f-o = faecal-oral transmission; p-p = predator-prey transmission; v-b = vector-borne transmission.

Numerous species of eimeriid coccidia have been described from a wide range of vertebrate and invertebrate hosts. Some 50 genera have been classified in 11 families in the suborder Eimeriorina, including 21 genera in the family Eimeriidae. Most genera are characterized by the formation of oocysts with unique configurations in terms of the numbers of contained sporocysts and sporozoites. The genus *Eimeria* forms oocysts with a 1:4:2 configuration; that is, oocysts are tetrasporocystic (contain 4 sporocysts) and each sporocyst is disporozoic (contains 2 sporozoites).

Parasite genera	No. spp.	Life-cycle	Hosts	Oocyst configuration
Family: EIMERIIDAE				
<i>Diaspora</i>	1	monoxenous	invertebrates (arthropods)	0:1:1
<i>Tyzzeria</i>	12	monoxenous	vertebrates (birds, reptiles)	1:0:8
<i>Pfeifferinella</i>	6	monoxenous	invertebrates (molluscs, priapulids)	1:0:8-14
<i>Alveocystis</i>	4	monoxenous	invertebrates (molluscs, priapulids)	1:0:8-14
<i>Mantonella</i>	5	monoxenous	invertebrates (panarthropods), vertebrates (turtles, rodents, birds, some possibly pseudoparasites)	1:1:4
<i>Caryospora</i>	70	monoxenous	vertebrates (birds, reptiles)	1:1:8
<i>Cyclospora</i>	19	monoxenous	vertebrates (mammals)	1:2:2
<i>Dorisa</i>	13	monoxenous	vertebrates (reptiles, mammals)	1:2:8
<i>Isospora</i>	360	monoxenous	vertebrates (mammals, birds, reptiles, fish), invertebrates (molluscs)	1:2:4
<i>Sivatoshella</i>	1	monoxenous	vertebrates (birds)	1:2:16
<i>Eimeria</i>	1,700	monoxenous	vertebrates (mammals, birds, reptiles, fish), invertebrates (arthropods, annelids, hemichordates, protochordates)	1:4:2
<i>Epieimeria</i>	3	monoxenous	vertebrates (fish)	1:4:2
<i>Choleoeimeria</i>	16	monoxenous	vertebrates (reptiles)	1:4:2
<i>Wenyonella</i>	18	monoxenous	vertebrates (mammals, birds, reptiles)	1:4:4
<i>Margolisiella</i>	6	monoxenous	invertebrates (molluscs)	1:n:2-4
<i>Octosporella</i>	6	monoxenous	vertebrates (fish, reptiles, echidnas, some possibly pseudoparasites)	1:8:2
<i>Gousseffia</i>	1	monoxenous	vertebrates (hedgehogs, possibly pseudoparasites)	1:8:n
<i>Polysporella</i>	1	monoxenous	vertebrates (birds, possibly pseudoparasites)	1:9-15:2
<i>Skrjabinella</i>	1	monoxenous	vertebrates (rodents, possibly pseudoparasites)	1:16:1
<i>Hoarella</i>	1	monoxenous	vertebrates (lizards)	1:16:2
<i>Pythonella</i>	3	monoxenous	vertebrates (reptiles, birds)	1:16:4

Infections by *Eimeria* spp. have been recorded throughout the world in most vertebrate species, including eutherian and metatherian mammals, birds, reptiles and fish. Most coccidian species are considered to be highly host-specific and only parasitize single host species (oioxenous), although some species in birds and reptiles may parasitize closely-related hosts (stenoxenous) and a few species in fish may parasitize unrelated hosts (euryxenous). Many hosts also harbour multiple species of coccidia which may vary considerably in morphology, developmental cycle, site of infection and pathogenicity. Twelve *Eimeria* spp. have been described from cattle, 12 from sheep, 12 from goats, and seven from chickens. In general, the small rapidly-developing species are generally the most pathogenic. The following table lists representative *Eimeria* taxa from domestic animals together with morphometric data, tissue tropism and pathogenic potential, while the following tables provide comprehensive host-parasite lists.

<i>Eimeria</i> species	Oocyst size (µm)	Hosts	Site of infection	Pathogenicity
Ruminants				
<i>E. alabamensis</i>	19 x 13	Artiodactyla; bovid (cattle, zebu, water buffalo)	small and large intestines	moderate
<i>E. auburnensis</i>	38 x 23	Artiodactyla; bovid (cattle, zebu, water buffalo, bison)	small intestine	low
<i>E. bovis</i> (syn. <i>E. smithi</i> , <i>aareyi</i>)	28 x 21	Artiodactyla; bovid (cattle, zebu, gaur, banteng, water buffalo, wisent, bison)	small and large intestines	high
<i>E. brasiliensis</i> (syn. <i>E. boehmi</i> , <i>orlovi</i> , <i>helenae</i>)	38 x 27	Artiodactyla; bovid (cattle, zebu, water buffalo, bison)	intestines?*	low
<i>E. bukidnonensis</i>	49 x 35	Artiodactyla; bovid (cattle, zebu, banteng, water buffalo)	intestines?	low
<i>E. wyomingensis</i>	40 x 28	Artiodactyla; bovid (cattle, zebu, water buffalo)	intestines?	low
<i>E. canadensis</i> (syn. <i>E. zurnabadensis</i>)	32 x 23	Artiodactyla; bovid (cattle, zebu, banteng, water buffalo, wisent, bison)	intestines?	low

<i>E. cylindrica</i>	24 x 14	Artiodactyla; bovid (cattle, zebu, water buffalo)	intestines?	low
<i>E. ellipsoidalis</i>	23 x 16	Artiodactyla; bovid (cattle, zebu, wisent)	small intestine	low
<i>E. pellita</i>	40 x 28	Artiodactyla; bovid (cattle, zebu)	intestines?	low
<i>E. subspherica</i>	11 x 10	Artiodactyla; bovid (cattle, zebu, water buffalo)	intestines?	low
<i>E. zuernii</i>	18 x 16	Artiodactyla; bovid (cattle, zebu, water buffalo, wisent)	small and large intestines	high
<i>E. ahsata</i>	33 x 24	Artiodactyla: bovid (sheep, bighorn, mouflon)(early reports include goat, Siberian ibex)	small intestine	low
<i>E. bakuensis</i>	29 x 19	Artiodactyla: bovid (sheep, bighorn, argali, mouflon)	small intestine	low
<i>E. crandallis</i>	22 x 19	Artiodactyla: bovid (sheep, bighorn, mouflon, argali)(early reports include goat, Siberian ibex)	small and large intestines	high
<i>E. faurei</i>	35 x 22	Artiodactyla: bovid (sheep, bighorn, argali, mouflon, urial, Barbary sheep) (early reports include goat, chamois, ibex, Siberian ibex)	small and large intestines	low
<i>E. granulosa</i>	29 x 21	Artiodactyla: bovid (sheep, bighorn) (early reports include goat)	intestines?	low
<i>E. intricata</i>	46 x 33	Artiodactyla: bovid (sheep, bighorn, mouflon) (early reports include goat)	small and large intestines	low
<i>E. marsica</i>	19 x 13	Artiodactyla: bovid (sheep)	intestines?	low
<i>E. ovinoidalis</i>	24 x 20	Artiodactyla: bovid (sheep, bighorn, mouflon)	small and large intestines	moderate
<i>E. pallida</i>	16 x 12	Artiodactyla: bovid (sheep, goat, ibex)	intestines?	low
<i>E. parva</i> (syn. <i>E. galouzoii</i>)	17 x 13	Artiodactyla: bovid (sheep, bighorn, mouflon, argali, urial) (early reports in goat, ibex, Siberian ibex)	small and large intestines	low
<i>E. weybridgensis</i>	24 x 17	Artiodactyla: bovid (sheep)	small intestine	low
<i>E. punctata</i>	26 x 20	Artiodactyla: bovid (sheep, goat)	small intestine	low
<i>E. alijevi</i>	18 x 16	Artiodactyla: bovid (goat, ibex, Siberian ibex)	small and large intestines	low
<i>E. arloingi</i>	28 x 20	Artiodactyla: bovid (goat, wild goat, ibex, Siberian ibex, markhor, chamois, Himalayan tahr) [plus early reports in sheep, mouflon, argali]	small and large intestines	high
<i>E. aspheronica</i>	31 x 23	Artiodactyla: bovid (goat)	intestines?	low
<i>E. capralis</i>	29 x 20	Artiodactyla: bovid (goat)	intestines?	low
<i>E. caprina</i>	32 x 23	Artiodactyla: bovid (goat)	small and large intestines	moderate
<i>E. caprovina</i>	30 x 24	Artiodactyla: bovid (goat, plus experimental infection in sheep)	intestines?	low
<i>E. charlestoni</i>	23 x 17	Artiodactyla: bovid (goat)	intestines?	low
<i>E. christenseni</i>	38 x 25	Artiodactyla: bovid (goat)	small intestine	high
<i>E. hirci</i>	22 x 18	Artiodactyla: bovid (goat, wild goat, Siberian ibex, alpine ibex)	intestines?	moderate
<i>E. jolchijevi</i>	31 x 22	Artiodactyla: bovid (goat)	intestines?	low
<i>E. masseyensis</i>	22 x 17	Artiodactyla: bovid (goat)	intestines?	low
<i>E. ninakohlyakimovae</i>	24 x 19	Artiodactyla: bovid (goat, wild goat, ibex, Siberian ibex)(early reports include black-tailed gazelle, sheep, bighorn sheep, mouflon, snow sheep, Barbary sheep, urial)	small and large intestines	moderate
Pigs				
<i>E. deblickei</i>	25 x 17	Artiodactyla: suid (pig)	small intestine	moderate
<i>E. neodeblickei</i>	21 x 16	Artiodactyla: suid (pig)	intestines?	low
<i>E. perminuta</i>	14 x 12	Artiodactyla: suid (pig)	intestines?	low
<i>E. polita</i>	26 x 18	Artiodactyla: suid (pig)	small intestine	moderate
<i>E. porci</i>	22 x 16	Artiodactyla: suid (pig)	small intestine	low
<i>E. scabra</i>	32 x 22	Artiodactyla: suid (pig)	small and large intestines	low
<i>E. spinosa</i>	21 x 15	Artiodactyla: suid (pig)	small intestine	low

<i>E. suis</i>	18 x 14	Artiodactyla: suid (pig)	intestines?	low
Horses				
<i>E. leuckarti</i>	80 x 60	Perissodactyla: equid (horse, ass)	small intestines	low
<i>E. solipedum</i>	22 x 10	Perissodactyla: equid (horse, ass)	small intestines	low
<i>E. uniungulata</i>	20 x 15	Perissodactyla: equid (horse, ass)	small intestines	low
Rabbits				
<i>E. coecicola</i>	34 x 20	Lagomorpha: leporid (rabbit)	small intestines	low
<i>E. exigua</i>	15 x 13	Lagomorpha: leporid (rabbit)	small intestines	low
<i>E. flavescens</i>	30 x 21	Lagomorpha: leporid (rabbit)	small and large intestines	low
<i>E. intestinalis</i>	27 x 19	Lagomorpha: leporid (rabbit)	small intestines	moderate
<i>E. irresidua</i>	38 x 26	Lagomorpha: leporid (rabbit, eastern cottontail)	small intestines	low
<i>E. magna</i>	35 x 24	Lagomorpha: leporid (rabbit, black-tailed jackrabbit, eastern cottontail, European hare, Arctic hare)	small intestines	low
<i>E. media</i>	31 x 19	Lagomorpha: leporid (rabbit, black-tailed jackrabbit, eastern cottontail, mountain cottontail)	small intestines	low
<i>E. perforans</i>	25 x 15	Lagomorpha: leporid (rabbit, snowshoe hare, black-tailed jackrabbit, eastern cottontail, European hare, Arctic hare)	small intestines	low
<i>E. piriformis</i>	29 x 18	Lagomorpha: leporid (rabbit)	large intestines	low
<i>E. stiedai</i> (syn. <i>E. cuniculi</i> , <i>E. oviformis</i>)	37 x 21	Lagomorpha: leporid (rabbit, cottontails, hares)	liver, bile ducts	high
<i>E. vej dovsiyi</i>	32 x 19	Lagomorpha: leporid (rabbit)	small intestines	low
Rodents				
<i>E. caviae</i>	19 x 17	Rodentia: caviid (guinea pig, Brazilian guinea pig)	large intestines	moderate
<i>E. hasei</i>	18 x 14	Rodentia: murid (black rat)	intestines?	low
<i>E. nieschulzi</i>	23 x 18	Rodentia: murid (black rat, brown rat, pygmy rice rat, red spiny rat, Hawaiian rat, Sunda rat)	small intestines	low
<i>E. nocti</i>	17 x 14	Rodentia: murid (black rat, brown rat)	intestines?	low
<i>E. ratti</i>	23 x 15	Rodentia: murid (black rat)	intestines?	low
<i>E. falciiformis</i> [type species]	21 x 18	Rodentia: murid (house mouse)	small and large intestines	low
<i>E. hindlei</i>	23 x 19	Rodentia: murid (house mouse)	intestines?	low
<i>E. keilini</i>	29 x 19	Rodentia: murid (house mouse)	intestines?	low
<i>E. krijgsmanni</i>	22 x 15	Rodentia: murid (house mouse)	intestines?	low
<i>E. musculi</i>	24	Rodentia: murid (house mouse)	intestines?	low
<i>E. schueffneri</i>	21 x 15	Rodentia: murid (house mouse)	intestines?	low
Poultry				
<i>E. acervulina</i>	20 x 14	Galliformes: phasianid (chicken, Sri Lanka junglefowl)	anterior small intestine	high
<i>E. brunetti</i>	27 x 22	Galliformes: phasianid (chicken))	small and large intestines	high
<i>E. maxima</i>	29 x 23	Galliformes: phasianid (chicken), odontophorid (California quail)	mid small intestine	moderate
<i>E. mitis</i>	16 x 14	Galliformes: phasianid (chicken), odontophorid (California quail, mountain quail)	small and large intestines	low
<i>E. necatrix</i>	17 x 14	Galliformes: phasianid (chicken))	small intestine, caecum	high
<i>E. praecox</i>	21 x 17	Galliformes: phasianid (chicken))	small intestine	low
<i>E. tenella</i> (syn. <i>E. avium</i> , <i>bracheti</i> , <i>globosa</i>)	23 x 19	Galliformes: phasianid (chicken, rock partridge, grey partridge, red grouse, common pheasant), odontophorid (bobwhite quail, California quail, mountain quail)	caecum	high
<i>E. grenieri</i>	26 x 24	Galliformes: phasianid (helmeted guinea fowl)	intestines, caecum	moderate
<i>E. numidae</i>	19 x 15	Galliformes: phasianid (helmeted guinea fowl)	intestines, caecum	high

<i>E. adenoides</i>	25 x 16	Galliformes: phasianid (turkey)	small and large intestines	high
<i>E. dispersa</i>	23 x 19	Galliformes: phasianid (turkey, Gould's turkey, common pheasant, chicken), odontophorid (bobwhite quail)	anterior small intestine	moderate
<i>E. gallopavonis</i>	26 x 21	Galliformes: phasianid (turkey)	small and large intestines	moderate
<i>E. innocua</i>	22 x 21	Galliformes: phasianid (turkey)	small intestine	low
<i>E. meleagris</i>	24 x 17	Galliformes: phasianid (turkey)	caecum	moderate
<i>E. meleagrimitis</i>	19 x 16	Galliformes: phasianid (turkey)	anterior small intestine	high
<i>E. subrotunda</i>	22 x 20	Galliformes: phasianid (turkey)	small intestine	low
<i>E. anseris</i> (syn. <i>E. parvula</i>)	22 x 17	Anseriformes: anatid (goose, snow goose, Canada goose)	small and large intestines	moderate
<i>E. nocens</i>	29 x 20	Anseriformes: anatid (greylag goose, lesser white-fronted goose, snow goose)	small intestines	moderate
<i>E. truncata</i>	21 x 16	Anseriformes: anatid (greylag goose, Ross's goose, snow goose, Canada goose)	kidney	moderate
<i>E. anatis</i>	17 x 14	Anseriformes: anatid (ducks)	small intestines	low
<i>E. stigmosa</i>	23 x 17	Anseriformes: anatid (ducks)	intestines	low
<i>E. duodenalis</i>	21 x 19	Galliformes: phasianid (common pheasant)	small intestines	moderate
<i>E. colchici</i>	27 x 17	Galliformes: phasianid (common pheasant)	caecum	high
<i>E. phasiani</i>	23 x 16	Galliformes: phasianid (common pheasant, golden pheasant, Reeve's pheasant, white-eared pheasant, silver pheasant)	caecum	moderate
<i>E. legionensis</i>	21 x 15	Galliformes: phasianid (red-legged partridge, rock partridge)	caecum	moderate
<i>E. bateri</i>	23 x 18	Galliformes: phasianid (common quail, gray quail)	intestines	low
<i>E. azura</i>	24 x 19	Galliformes: phasianid (Japanese quail)	intestines	moderate
<i>E. tsunodai</i>	18 x 14	Galliformes: phasianid (Japanese quail)	caecum	high
Fish				
<i>E. variabilis</i>	13.3	marine Scorpaeniformes: cottid (lonspined bullhead); Anguilliformes: anguillid (European eel); Perciformes: labrid (corkwing wrasse); Gobiiformes: gobiid (rock goby)	pyloric caeca, rectum	low
<i>E. nucleocola</i>	12-14	marine Scorpaeniformes: cottid (shorthorn sculpin)	pyloric caeca	low
<i>E. cotti</i>	9-11	freshwater Scorpaeniformes: cottid (European bullhead, slimy sculpin)	intestines	low
<i>E. catalana</i>	11	marine Perciformes: labrid (axillary wrasse)	intestines	low
<i>E. hexagona</i>	12	marine Gadiformes: lotid (shore rockling)	intestines, pyloric caeca	moderate
<i>E. dykova</i>	7.8	marine Perciformes: latrid (red morwong)	intestines, pyloric caeca	low
<i>E. osmeri</i>	10.7	freshwater Osmeriformes: osmerid (rainbow smelt)	intestines	low
<i>E. truttae</i>	12	anadromous and freshwater Salmoniformes: salmonid (masu, rainbow trout, brown trout, grayling)	intestines, pyloric caeca	low
<i>E. brevoortiana</i>	26 x 22	marine Clupeiformes: clupeid (menhaden)	pyloric caeca, testes	low
<i>E. rutili</i>	22 x 10	freshwater Cypriniformes: cyprinid (roach)	kidneys	moderate
<i>E. branchyphila</i>	23 x 9	freshwater Cypriniformes: cyprinid (roach)	kidneys, gills, spleen, muscles, brain	moderate
<i>E. sardinae</i>	50	marine Clupeiformes: clupeid (herring, pilchard, anchovy, shad, sprat)	seminiferous tubules	high
<i>E. quentini</i>	37.8 x 12.6	marine Myliobatiformes: myliobatid (spotted eagle ray)	peritoneal cells	low
<i>E. halleri</i>	?	marine Myliobatiformes: urotrygonid (round stingray)	spiral valve	low

*site of endogenous development not known, but presumed to be intestines because oocysts detected in faeces

Collectively, over 1,620 *Eimeria* spp. have been described from a wide range of wild and captive animals; with around 935 species recorded from mammals; 218 from birds; 250 from reptiles; 41 from amphibia; 167 from fish; and 9 from invertebrates. The website “Coccidia of the World” attempts to catalogue parasite biodiversity (= species richness) together with taxonomic authorities, including numerous host records for un-named species. The following tables list named taxa for which parasite descriptions are consistent with taxonomic guidelines (as stipulated by the International Code of Zoological Nomenclature).

<i>Eimeria</i> spp.	Oocyst size (µm)	Hosts
Mammals		
<i>E. abdildaevi</i>		Rodentia: glirid (forest dormouse)
<i>E. abenovi</i>	32 x 23	Artiodactyla: bovid (goitered gazelle)
<i>E. abidzhanovi</i>		Rodentia: murid (great gerbil)
<i>E. absheronae</i>	30 x 23	Artiodactyla: bovid (goat, Alpine ibex, Siberian ibex)
<i>E. abusalimovi</i>	30 x 22	Rodentia: glirid (forest dormouse)
<i>E. abuschevi</i>	26 x 23	Rodentia: murid (Major’s pine vole)
<i>E. achburunica</i>	20 x 17	Rodentia: murid (Libyan jird)
<i>E. adiyamanensis</i>		Rodentia: spalacid (Middle East blind mole rat)
<i>E. adleri</i>	22	Carnivora: canid (red fox)
<i>E. aepyprymni</i>	37 x 22	Diprotodontia: potoroid (rufous rat-kangaroo)
<i>E. aeromysis</i>	35 x 22	Rodentia: sciurid (black flying squirrel)
<i>E. aethiospora</i>	19 x 13	Eulipotyphla: talpid (hairy-tailed mole)
<i>E. africana</i>	17 x 14	Rodentia: murid (rusty-bellied brush-furred rat)
<i>E. africiensis</i>	25 x 20	Artiodactyla: bovid (goat)
<i>E. agouti</i>		Rodentia: agoutid (spotted paca)
<i>E. agrarii</i>	25	Rodentia: murid (striped field mouse)
<i>E. aguti</i>	17	Rodentia: dasyproctid (red-rumped agouti)
<i>E. ahsata</i>	33 x 24	Artiodactyla: bovid (sheep, bighorn, mouflon) (early reports include goat, Siberian ibex)
<i>E. ailuri</i>	24 x 13	Carnivora: ailurid (red panda)
<i>E. airculensis</i>	13	Rodentia: sciurid (yellow ground squirrel)
<i>E. akeriana</i>		Rodentia: murid (Tristram’s jird)
<i>E. akodoni</i>		Rodentia: cricetid (Venezuelan vole mouse)
<i>E. alabamensis</i>	19 x 13	Artiodactyla: bovid (cattle, zebu, water buffalo)
<i>E. alactagae</i>	24	Rodentia: dipodid (great jerboa)
<i>E. albertensis</i>	42 x 22	Carnivora: ursid (American black bear)
<i>E. albigulae</i>	22 x 20	Rodentia: cricetid (white-throated wood rat)
<i>E. alces</i>	37 x 25	Artiodactyla: cervid (moose)
<i>E. alijevi</i>	18 x 16	Artiodactyla: bovid (goat, ibex, Siberian ibex)
<i>E. alischerica</i>	34 x 23	Rodentia: murid (brown rat)
<i>E. allactagae</i>	24	Rodentia: dipodid (great jerboa, small five-toed jerboa, Egyptian jerboa)
<i>E. almaataensis</i> (syn. <i>E. almataensis</i>)	30 x 24	Artiodactyla: suid (pig)
<i>E. alpaca</i>	24 x 20	Artiodactyla: camelid (alpaca)
<i>E. alpina</i>	12	Artiodactyla: bovid (chamois)
<i>E. amburdariana</i>	21	Rodentia: murid (golden hamster)
<i>E. americana</i>	38 x 21	Lagomorpha: leporid (white-tailed jackrabbit)
<i>E. ammonis</i>	25 x 21	Artiodactyla: bovid (argali)
<i>E. amorphospora</i>	21 x 18	Eulipotyphla: talpid (Japanese shrew mole)
<i>E. andamanensis</i>	14	Chiroptera: emballonurid (black-bearded tomb bat)
<i>E. andrewsi</i>	21 x 15	Rodentia: sciurid (red squirrel)
<i>E. anekalensis</i>	27 x 20	Carnivora: felid (leopard)
<i>E. ankarensis</i>	39 x 26	Artiodactyla: bovid (water buffalo)
<i>E. antilocaprae</i>	31 x 26	Artiodactyla: antilocaprid (pronghorn)
<i>E. antilocervi</i>	31 x 14	Artiodactyla: bovid (blackbuck)
<i>E. antonellii</i>		Rodentia: murid (eastern woodrat)
<i>E. antrozoi</i>	25 x 22	Chiroptera: vespertilionid (pallid bat)
<i>E. anzanensis</i>	18 x 13	Rodentia: spalacid (Middle East blind mole-rat)
<i>E. aoluguyaensis</i>		Artiodactyla: cervid (reindeer)
<i>E. apionodes</i>	20 x 17	Rodentia: murid (yellow-necked mouse)
<i>E. apodemi</i>	24 x 20	Rodentia: murid (yellow-necked mouse, wood mouse, striped field mouse)

<i>E. aquatici</i>	17 x 11	Eulipotyphla: talpid (eastern mole)
<i>E. arabiana</i>	25 x 20	Rodentia: murid (Vinogradov's jird)
<i>E. arasinaensis</i>	19 x 16	Rodentia: murid (house mouse)
<i>E. araxena</i>	23 x 19	Rodentia: murid (Shaw's jird)
<i>E. arctica</i>	36 x 28	Artiodactyla: cervid (reindeer)
<i>E. arctomysi</i>	24 x 20	Rodentia: sciurid (alpine marmot)
<i>E. arctowski</i>	46 x 28	Pinnipeda: phocid (Weddell seal)
<i>E. argenteus</i>		Rodentia: murid (small Japanese field mouse, large Japanese field mouse, Korean field mouse)
<i>E. arizonensis</i>	22 x 19	Rodentia: murid (pinyon mouse, North American deer mouse, cactus mouse, white-footed mouse)
<i>E. arkhari</i>	22 x 17	Artiodactyla: bovid (argali, urial)
<i>E. arkutinae</i>		Rodentia: murid (wood mouse, yellow-necked mouse, striped field mouse)
<i>E. arloingi</i>	28 x 20	Artiodactyla: bovid (goat, wild goat, ibex, Siberian ibex, markhor, chamois, Himalayan tahr) [plus early reports in sheep, mouflon, argali]
<i>E. arundeli</i>	64 x 43	Diprotodontia: vombatid (common wombat)
<i>E. arusica</i>	23	Rodentia: murid (grey dwarf hamster)
<i>E. arvicanthi</i>	24 x 12	Rodentia: murid (Ethiopian grass mouse)
<i>E. arvicolae (arvalis)</i>	20 x 16	Rodentia: murid (snow vole, common vole, Strelzov's vole)
<i>E. asadovi</i>	25 x 22	Rodentia: glirid (forest dormouse)
<i>E. ascotensis</i>	24 x 15	Rodentia: sciurid (grey squirrel, fox squirrel)
<i>E. ashata</i>		Artiodactyla: bovid (sheep)
<i>E. aspheronica</i>		Artiodactyla: bovid (goat)
<i>E. assaensis</i>	28 x 25	Rodentia: murid (tamarisk jird)
<i>E. astrachanbazarica</i>	22 x 19	Rodentia: murid (Shaw's jird)
<i>E. asymmetrica</i>	29 x 17	Artiodactyla: cervid (red deer)
<i>E. athabascensis</i>		Lagomorpha: leporid (snowshoe hare)
<i>E. auburnensis</i>	38 x 23	Artiodactyla; bovid (cattle, zebu, water buffalo, bison)
<i>E. audubonii</i>	21 x 17	Lagomorpha: leporid (desert cottontail, eastern cottontail)
<i>E. aurata</i>	16	Rodentia: cricetid (golden hamster)
<i>E. auritanensis</i>	34 x 30	Didelphimorphia: didelphid (big-eared opossum)
<i>E. aurei</i>	16 x 15	Carnivora: canid (Sri Lankan jackal)
<i>E. auriti</i>	20 x 19	Eulipotyphla: erinaceid (long-eared hedgehog)
<i>E. austriaca</i>	21 x 17	Artiodactyla: cervid (red deer)
<i>E. avonensis</i>	15 x 10	Eulipotyphla: talpid (European mole)
<i>E. azerbaidshchanica</i>	45 x 22	Artiodactyla: bovid (cattle, water buffalo)
<i>E. azul</i>		Lagomorpha: leporid (eastern cottontail)
<i>E. babaevi</i>	23 x 21	Artiodactyla: bovid (Siberian ibex)
<i>E. babatica</i>		Lagomorpha: leporid (European hare)
<i>E. bactriani</i>	32 x 26	Artiodactyla: camel (Bactrian camel, dromedary)
<i>E. badamlinica</i>	16	Rodentia: murid (wood mouse)
<i>E. badchisica</i>		Rodentia: murid (great gerbil)
<i>E. baghdadensis</i>		Rodentia: murid (house mouse)
<i>E. bailwardi</i>		Rodentia: murid (Zagros Mountains mouse-like hamster)
<i>E. baiomysis</i>	23 x 19	Rodentia: murid (northern pygmy mouse, southern pygmy mouse)
<i>E. bakanensis</i>	14 x 11	Carnivora: canid (red fox), mustelid (ermine)
<i>E. bakuensis</i>	29 x 19	Artiodactyla: bovid (sheep, bighorn, argali, mouflon)
<i>E. balchanica</i>		Lagomorpha: ochotonid (Afghan pika)
<i>E. balphae</i>	17 x 14	Rodentia: heteromyid (Ord's kangaroo rat, agile kangaroo rat, Merriam's kangaroo rat, banner-tailed kangaroo rat)
<i>E. bandicota</i>		Rodentia: murid (lesser bandicoot rat)
<i>E. bandipurensis</i>	18 x 16	Rodentia: sciurid (Indian palm squirrel, jungle palm squirrel)
<i>E. banffensis</i>	28 x 23	Lagomorpha: ochotonid (American pika, collared pika, northern pika)
<i>E. bareillyi</i>	29 x 20	Artiodactyla: bovid (water buffalo)
<i>E. barleyi</i>		Rodentia: murid (eastern woodrat)
<i>E. barretti</i>	33 x 24	Lagomorpha: ochotonid (American pika)
<i>E. baskanica (species inquirenda)</i>	12 x 9	Carnivora: mustelid (stoat)
<i>E. bassagensis</i>		Rodentia: murid (flat-headed vole)
<i>E. batabatensis</i>	19 x 15	Rodentia: murid (European water vole)

<i>E. beckeri</i> (syn. <i>E. ussuriensis</i>)	21 x 18	Rodentia: sciurid (Belding's ground squirrel, yellow ground squirrel, little souslik, relict ground squirrel, long-tailed ground squirrel)
<i>E. beecheyi</i> (syn. <i>E. cochisensis</i> , <i>E. asiatici</i>)	19 x 16	Rodentia: sciurid (Gunnison's prairie dog, white-tailed prairie dog, black-tailed prairie dog, yellow-bellied marmot, California ground squirrel, Wyoming ground squirrel, relict ground squirrel, Richardson's ground squirrel, Townsend's ground squirrel, thirteen-lined ground squirrel, long-tailed ground squirrel, rock squirrel, yellow ground squirrel, red-cheeked ground squirrel, common chipmunk, gray-footed chipmunk, cliff chipmunk, California chipmunk, Townsend's chipmunk)
<i>E. belorussica</i>	27 x 15	Lagomorpha: leporid (European hare, varying hare)
<i>E. bentongi</i>	17 x 15	Eulipotyphla: erinaceid (short-tailed gymnure)
<i>E. berea</i>	12 x 11	Eulipotyphla: talpid (European mole)
<i>E. bereillyi</i>		Artiodactyla: bovid (water buffalo)
<i>E. berkinbaevi</i>	33 x 27	Rodentia: sciurid (yellow ground squirrel, red-cheeked ground squirrel)
<i>E. betica</i>	23 x 13	Artiodactyla: suid (pig)
<i>E. betongi</i>	17 x 15	Eulipotyphla: soricid (short-tailed gymnure)
<i>E. bicolor</i>	23 x 13	Diprotodontia: macropodid (swamp wallaby)
<i>E. bicrustae</i>	21 x 15	Rodentia: sciurid (Gunnison's prairie dog)
<i>E. bijlikuli</i>	32 x 26	Eulipotyphla: erinaceid (long-eared hedgehog)
<i>E. bilamellata</i>	32 x 26	Rodentia: sciurid (golden-mantled ground squirrel, Uinta ground squirrel, California ground squirrel, European souslik, Franklin's ground squirrel, thirteen-lined ground squirrel, Columbian ground squirrel, Richardson's ground squirrel, rock squirrel)
<i>E. bistratum</i>	20 x 19	Rodentia: murid (Vinogradov's jird)
<i>E. biswapatti</i>		Rodentia: murid (short-tailed bandicoot rat)
<i>E. blarinae</i>	21 x 18	Eulipotyphla: soricid (northern short-tailed shrew)
<i>E. bohémica</i>	20 x 12	Rodentia: murid (European water vole)
<i>E. boliviensis</i>		Rodentia: hydrochoerid (capybara)
<i>E. bombayensis</i>	37 x 22	Artiodactyla: bovid (zebu)
<i>E. boonderoensis</i>	27 x 16	Diprotodontia: macropodid (allied rock wallaby, unadorned rock wallaby)
<i>E. borealis</i>	30 x 15	Carnivora: ursid (American black bear)
<i>E. botelhoi</i>	36 x 28	Rodentia: sciurid (Ingram's squirrel)
<i>E. bovis</i> (syn. <i>E. smithi</i> , <i>E. aareyi</i>)	28 x 21	Artiodactyla; bovid (cattle, zebu, gaur, banteng, water buffalo, wisent, bison)
<i>E. braganaensis</i>	16 x 15	Chiroptera: emballonurid (lesser dog-like bat)
<i>E. brasiliensis</i> (syn. <i>E. boehmi</i> , <i>E. orlovi</i> , <i>E. helenae</i>)	38 x 27	Artiodactyla: bovid (cattle, zebu, water buffalo, bison)
<i>E. brevicauda</i>	20 x 19	Eulipotyphla: soricid (northern short-tailed shrew)
<i>E. briansmithi</i>	21 x 20	Rodentia: murid (Mongolian jird)
<i>E. bukidnonensis</i>	49 x 35	Artiodactyla; bovid (cattle, zebu, banteng, water buffalo)
<i>E. burdai</i>		Rodentia: bathyergid (silvery mole-rat)
<i>E. bychowskyi</i>	25 x 18	Rodentia: murid (brown rat)
<i>E. cabassusi</i>	27	Cingulata: chlamyphorid (southern naked-tailed armadillo)
<i>E. cagandzeeri</i>		Artiodactyla: bovid (Mongolian gazelle)
<i>E. cahirinensis</i>		Rodentia: murid (Cairo spiny mouse)
<i>E. calentinei</i>	29 x 20	Lagomorpha: ochotonid (American pika, collared pika, northern pika)
<i>E. californicensis</i>	21 x 18	Chiroptera: vespertilionid (California myotis)
<i>E. callosciuri</i>	28 x 22	Rodentia: sciurid (Asian tricoloured squirrel, plaintain squirrel, grey-bellied squirrel, black-striped squirrel)
<i>E. callospermophili</i>	19 x 16	Rodentia: sciurid (Gunnison's prairie dog, white-tailed prairie dog, black-tailed prairie dog, grey marmot, bobak marmot, yellow-bellied marmot, groundhog, Tarbagan marmot, Uinta ground squirrel, California ground squirrel, Belding's ground squirrel, Columbian ground squirrel, European ground squirrel, Wyoming ground squirrel, red-cheeked ground squirrel, Franklin's ground squirrel, yellow ground squirrel, golden-mantled ground squirrel, Mexican ground squirrel, relict ground squirrel, Richardson's ground squirrel, spotted ground squirrel, Townsend's ground squirrel, thirteen-lined ground squirrel, long-tailed ground squirrel, rock squirrel)

<i>E. calomyscus</i>		Rodentia: murid (Zagros Mountains mouse-like hamster)
<i>E. caluromydis</i>	32 x 31	Didelphimorphia: didelphid (bare-tailed woolly opossum)
<i>E. cameli</i>	87 x 64	Artiodactyla: camelid (Bactrian camel, Arabian camel, llama)
<i>E. campania</i>		Lagomorpha: leporid (white-tailed jackrabbit, European hare, Indian hare)
<i>E. canadensis</i> (syn. <i>E. zurnabadensis</i>)	32 x 23	Artiodactyla; bovid (cattle, zebu, banteng, water buffalo, wisent, bison)
<i>E. canis</i>	31 x 19	Carnivora: canid (dog, coyote, dingo)
<i>E. canivelocis</i>	19 x 16	Carnivora: canid (silver fox)
<i>E. canna</i>	24 x 18	Artiodactyla: bovid (common eland)
<i>E. capibarae</i>	30 x 26	Rodentia: hydrochaerid (capybara)
<i>E. capra</i>	27 x 22	Artiodactyla: bovid (Siberian ibex)
<i>E. capralis</i>	29 x 20	Artiodactyla: bovid (goat)
<i>E. capreoli</i>	30 x 21	Artiodactyla: cervid (European roe deer, chamois)
<i>E. capricornis</i>	48 x 34	Artiodactyla: bovid (Japanese serow)
<i>E. caprina</i>	32 x 23	Artiodactyla: bovid (goat)
<i>E. capromydis</i>	24 x 20	Rodentia: capromyid (Desmarest's hutia)
<i>E. caprovina</i>	30 x 24	Artiodactyla: bovid (goat, plus experimental infection in sheep)
<i>E. caripensis</i>	20	Rodentia: echimyid (Guyenne spiny rat)
<i>E. carmelensis</i>	19 x 17	Rodentia: spalacid (Middle-East blind mole-rat)
<i>E. carolinensis</i>	18 x 11	Rodentia: murid (white-footed mouse)
<i>E. cati</i>	21 x 17	Carnivora: felid (cat, jungle cat, wildcat)
<i>E. catronensis</i>	22 x 15	Chiroptera: vespertilionid (little brown bat, Yuma myotis)
<i>E. catubrina</i>	31 x 25	Artiodactyla: cervid (European roe deer)
<i>E. causeyi</i>	26 x 16	Rodentia: castorid (North American beaver)
<i>E. caviae</i>	19 x 17	Rodentia: caviid (guinea pig, Brazilian guinea pig)
<i>E. celebii</i>	14 x 11	Rodentia: spalacid (Middle-East blind mole-rat)
<i>E. cephalophi</i>	22 x 16	Artiodactyla: bovid (blue duiker)
<i>E. cernae</i>	20 x 16	Rodentia: cricetid (bank vole, northern red-backed vole, grey red-backed vole)
<i>E. cervi</i>	33 x 21	Artiodactyla: cervid (red deer, European roe deer)
<i>E. cervis</i>	14 x 11	Artiodactyla: cervid (chital)
<i>E. chaetodipi</i>		Rodentia: heteromyid (agile kangaroo rat, Texas kangaroo rat, Merriam's kangaroo rat, Ord's kangaroo rat, banner-tailed kangaroo rat)
<i>E. chagasi</i>	14	Eulipotyphla: soricid (common shrew)
<i>E. chaparralensis</i>		Artiodactyla: tayassuid (collared peccary)
<i>E. charlestoni</i>		Artiodactyla: bovid (goat)
<i>E. chatangae</i>		Rodentia: murid (Siberian brown lemming)
<i>E. chaus</i>	20 x 18	Carnivora: felid (jungle cat)
<i>E. chausinghi</i>	25 x 18	Artiodactyla: bovid (four-horned antelope)
<i>E. cheetali</i>	26 x 15	Artiodactyla: cervid (chital)
<i>E. chetae</i>		Rodentia: cricetid (Middendorf's vole)
<i>E. chihuahuaensis</i>		Rodentia: heteromyid (Merriam's kangaroo rat)
<i>E. chinchillae</i>	18 x 16	Rodentia: chinchillid (long-tailed chinchilla); murid (four-striped grass mouse)
<i>E. chinkari</i>	25 x 22	Artiodactyla: bovid (mountain gazelle)
<i>E. chiropteri</i>	24 x 21	Chiroptera: vespertilionid (Kuhl's pipistrelle)
<i>E. chobotari</i>	48 x 35	Rodentia: heteromyid (Merriam's kangaroo rat, chisel-toothed kangaroo rat, agile kangaroo rat, Ord's kangaroo rat)
<i>E. choloepi</i>		Pilosa: megalonychid (Linnaeus's two-toed sloth)
<i>E. christenseni</i>	38 x 25	Artiodactyla: bovid (goat)
<i>E. chudatica</i>	21 x 17	Rodentia: cricetid (social vole)
<i>E. circumborealis</i>		Lagomorpha: ochotonid (collared pika, American pika, northern pika)
<i>E. citelli</i>	19 x 16	Rodentia: sciurid (Belding's ground squirrel, European ground squirrel, red-cheeked ground squirrel, yellow ground squirrel, little souslik, speckled ground squirrel, thirteen-lined ground squirrel, long-tailed ground squirrel)
<i>E. clethrionomyis</i>	19 x 15	Rodentia: cricetid (southern red-backed vole)
<i>E. coahuiliensis</i>	30 x 20	Rodentia: cricetid (Mexican vole)
<i>E. cochabambensis</i>	22 x 20	Didelphimorphia: didelphid (Dorothy's slender opossum, gray short-

		tailed opossum, elegant fat-tailed mouse opossum)
<i>E. coecicola</i>		Lagomorpha: leporid (rabbit)
<i>E. comminispota</i>		Rodentia: sciurid (Hodgson's giant flying squirrel)
<i>E. condylurae</i>	18 x 16	Eulipotyphla: talpid (star-nosed mole)
<i>E. conevi</i>		Rodentia: murid (great gerbil)
<i>E. confusa</i>	36 x 28	Rodentia: sciurid (eastern grey squirrel, fox squirrel)
<i>E. congolensis</i>	30 x 22	Artiodactyla: bovid (waterbuck)
<i>E. connochaetei</i>	22 x 14	Artiodactyla: bovid (blue wildebeest)
<i>E. contorta</i>	21 x 17	Rodentia: murid (brown rat), plus experimental infection in murid (house mouse, Natal multimammate mouse)
<i>E. correptionis</i>	22 x 17	Rodentia: cricetid (Major's pine vole)
<i>E. corticulata</i>		Pilosa: myrmecophagid (collared anteater)
<i>E. cotiae</i>	29 x 18	Rodentia: dasyproctid (red-rumped agouti)
<i>E. coucangi</i>	21 x 17	Primates: loroid (greater slow loris)
<i>E. couesii</i>	21 x 18	Rodentia: cricetid (Coues' rice rat)
<i>E. coypi</i>	23 x 15	Rodentia: echimyid (coyppu)
<i>E. crandallis</i>	22 x 19	Artiodactyla: bovid (sheep, bighorn, mouflon, argali) (early reports include goat, Siberian ibex)
<i>E. criceti</i>	18	Rodentia: cricetid (European hamster)
<i>E. cricetomysi</i>	19 x 16	Rodentia: nesomyid (Gambian pouched rat)
<i>E. cricetuli</i>	40 x 28	Rodentia: cricetid (grey dwarf hamster)
<i>E. crocidurae</i> (<i>species inquirenda</i>)	16 x 13	Eulipotyphla: soricid (greater white-toothed shrew)
<i>E. cryptobarretti</i>	30 x 21	Lagomorpha: ochotonid (American pika)
<i>E. cryptotis</i>	16 x 15	Eulipotyphla: soricid (North American least shrew)
<i>E. cubinica</i>	20 x 16	Rodentia: murid (social vole)
<i>E. cusarica</i>	27 x 22	Rodentia: murid (social vole)
<i>E. cyclopis</i>		Pilosa: cyclopedid (silky anteater)
<i>E. cylindrica</i>	24 x 14	Artiodactyla; bovid (cattle, zebu, water buffalo)
<i>E. cynomysis</i>	35 x 30	Rodentia: sciurid (Gunnison's prairie dog, white-tailed prairie dog, black-tailed prairie dog, Uinta ground squirrel, California ground squirrel, European ground squirrel, Columbian ground squirrel, Wyoming ground squirrel, Franklin's ground squirrel, golden-mantled ground squirrel, Richardson's ground squirrel, Townsend's ground squirrel, thirteen-lined ground squirrel, rock squirrel)
<i>E. dacunhai</i>		Cingulata: chlamyphorid (naked-tailed armadillo)
<i>E. dalli</i>	44 x 37	Artiodactyla: bovid (thin horn sheep)
<i>E. damirchinica</i>	19 x 16	Rodentia: dipodid (small five-toed jerboa)
<i>E. danielle</i> (<i>species inquirenda</i>)	.	Artiodactyla: bovid (sheep)
<i>E. darjeelingensis</i>	17 x 15	Eulipotyphla: soricid (Asian house shrew)
<i>E. dasymysis</i>	20 x 17	Rodentia: murid (West African shaggy rat)
<i>E. dathei</i>	55 x 37	Artiodactyla: bovid (waterbuck)
<i>E. daurica</i>	21 x 14	Lagomorpha: ochotonid (Daurian pika)
<i>E. davisii</i>	28 x 23	Rodentia: cricetid (white-throated woodrat)
<i>E. dawari</i>	22 x 20	Artiodactyla: cervid (red muntjac)
<i>E. debliccki</i>	25 x 17	Artiodactyla: suid (pig)
<i>E. delicata</i>	14 x 11	Rodentia: cricetid (North American deer mouse)
<i>E. dendrohyraxis</i>	26 x 18	Hyracoidea: procaviid (southern tree hyrax)
<i>E. dendrolagi</i>	34 x 18	Diprotodontia: macropodid (Lumholtz's tree-kangaroo)
<i>E. derenica</i>	29 x 21	Rodentia: cricetid (common vole)
<i>E. deserticola</i>	20 x 17	Rodentia: sciurid (yellow ground squirrel)
<i>E. desmaresti</i>	17 x 10	Diprotodontia: macropodid (red-necked wallaby)
<i>E. dicotylensis</i>		Artiodactyla: tayassuid (collared peccary)
<i>E. dicrostonicis</i>	29 x 25	Rodentia: cricetid (Nearctic collared lemming, Arctic lemming, Siberian brown lemming)
<i>E. didelphidis</i>	16	Didelphimorphia: didelphid (big-eared opossum)
<i>E. dipodomysis</i>	54 x 40	Rodentia: heteromyid (Merriam's kangaroo rat, Phillip's kangaroo rat, Ord's kangaroo rat)
<i>E. disaensis</i>	23 x 18	Rodentia: murid (Persian jird)
<i>E. dissimilis</i>	28 x 19	Eulipotyphla: soricid (Eurasian shrew)

<i>E. divichinica</i>	24 x 19	Rodentia: murid (wood mouse)
<i>E. dogeli</i>		Rodentia: murid (Persian jird)
<i>E. dolichotis</i>	24 x 19	Rodentia: caviid (Patagonian mara)
<i>E. domashnevae</i> (<i>species inquirenda</i>)	14 x 13	Eulipotyphla: soricid (Tien Shan shrew)
<i>E. dorcadis</i>	29 x 18	Artiodactyla: bovid (dorcass gazelle)
<i>E. dorneyi</i>	26 x 15	Rodentia: sciurid (northern flying squirrel)
<i>E. dorsalis</i>		Hyracoidea: procaviid (western tree hyrax)
<i>E. dromedarii</i>	28 x 23	Artiodactyla: camelid (Bactrian camel, Arabian camel)
<i>E. dukei</i>	24 x 20	Chiroptera: molossid (little free-tailed bat)
<i>E. dusii</i>		Rodentia: cricetid (eastern woodrat)
<i>E. dyromidis</i>	22 x 19	Rodentia: glirid (forest dormouse)
<i>E. dzahariana</i>	21 x 19	Rodentia: murid (Shaw's jird, Tristram's jird)
<i>E. dzhulfaensis</i>	24 x 21	Rodentia: cricetid (social vole)
<i>E. echidnae</i>		Monotremata: tachyglossid (short-beaked echidna)
<i>E. edwardsi</i>	29 x 22	Rodentia: murid (Edward's long-tailed rat)
<i>E. egypti</i>	28 x 16	Rodentia: murid (Shaw's jird)
<i>E. elaphi</i>	13 x 12	Artiodactyla: cervid (red deer)
<i>E. elater</i>	26 x 21	Rodentia: dipodid (small five-toed jerboa)
<i>E. elegans</i>	34 x 20	Artiodactyla: bovid (black-tailed gazelle)
<i>E. elerybeckeri</i>		Rodentia: murid (black rat)
<i>E. ellipsoidalis</i>	23 x 16	Artiodactyla: bovid (cattle, zebu, wisent)
<i>E. elliptica</i>		Rodentia: spalacid (lesser mole-rat)
<i>E. ellobii</i>	30 x 24	Rodentia: cricetid (northern mole vole)
<i>E. elongata</i>		Lagomorpha: leporid (rabbit)
<i>E. environ</i>	26 x 19	Lagomorpha: leporid (mountain cottontail, eastern cottontail, desert cottontail)
<i>E. eremici</i>	25 x 21	Rodentia: cricetid (cactus mouse)
<i>E. ernsti</i>	33 x 23	Artiodactyla: bovid (mountain goat)
<i>E. erschovi</i>	21 x 19	Lagomorpha: ochotonid (Daurian pika, Pallas's pika)
<i>E. erythrourica</i>	21 x 18	Rodentia: murid (Libyan jird)
<i>E. escomeli</i>	21 x 17	Pilosa: myrmecophagid (giant anteater)
<i>E. eubeckeri</i>	34 x 24	Rodentia: sciurid (Franklin's ground squirrel, red squirrel)
<i>E. eumopos</i>	29 x 26	Chiroptera: molossid (western mastiff bat)
<i>E. europaea</i>	32 x 18	Lagomorpha: leporid (European hare)
<i>E. eutamiae</i>	27 x 21	Rodentia: sciurid (cliff chipmunk)
<i>E. evoti</i>	21 x 19	Chiroptera: vespertilionid (gleaning myotis)
<i>E. exigua</i>	15 x 13	Lagomorpha: leporid (rabbit, Arctic hare, eastern cottontail)
<i>E. falciformis</i> [type species]	21 x 18	Rodentia: murid (house mouse)
<i>E. faurei</i>	35 x 22	Artiodactyla: bovid (sheep, bighorn, argali, mouflon, urial, Barbary sheep) (early reports in goat, chamois, ibex, Siberian ibex)
<i>E. fedoseevi</i> (<i>species inquirenda</i>)	28 x 19	Eulipotyphla: soricid (Tien Shan shrew)
<i>E. felina</i>	24 x 15	Carnivora: felid (cat, jungle cat, wildcat, lion)
<i>E. ferrisi</i>	18 x 15	Rodentia: murid (house mouse)
<i>E. ferruginea</i>	34 x 28	Scandentia: tupaiid (Sumatran treeshrew)
<i>E. firestonei</i>	19 x 16	Eulipotyphla: soricid (Fraser's musk shrew)
<i>E. fitzgeraldi</i>	28 x 22	Rodentia: geomyid (northern pocket gopher)
<i>E. flavescens</i>		Lagomorpha: leporid (rabbit)
<i>E. flexilis</i>	22	Eulipotyphla: talpid (European mole)
<i>E. flindersi</i>	44 x 29	Diprotodontia: macropodid (tammar wallaby, antilopine wallaroo, red-necked wallaby)
<i>E. fluviatilis</i>	19 x 17	Rodentia: echimyid (coyupu)
<i>E. franchinii</i>	24 x 15	Rodentia: sciurid (red squirrel)
<i>E. franklinii</i>	21 x 15	Rodentia: sciurid (Franklin's ground squirrel, red squirrel)
<i>E. fumeus</i>	28 x 22	Eulipotyphla: soricid (smoky shrew, montane shrew, Pacific shrew, long-clawed shrew)
<i>E. furonis</i>	13 x 12	Carnivora: mustelid (European polecat, American mink, black-footed ferret, ermine)
<i>E. gaimardi</i>	35 x 24	Diprotodontia: potoroid (eastern bettong)

<i>E. galago</i>	22 x 21	Primates: galagid (Senegal bushbaby)
<i>E. gallatii</i>	28 x 19	Rodentia: cricetid (southern red-backed vole, grey red-backed vole, northern red-backed vole)
<i>E. gallivalerioi</i>	20 x 12	Artiodactyla: cervid (red deer, fallow deer)
<i>E. gambai</i>	26 x 20	Didelphimorpha: didelphid (big-eared opossum)
<i>E. gandobica</i>	19 x 17	Rodentia: murid (striped field mouse)
<i>E. garnhami</i>	16 x 15	Rodentia: sciurid (striped ground squirrel)
<i>E. garridoi</i>	17 x 15	Rodentia: capromyid (Desmarest's hutia)
<i>E. garumarana</i>	18	Rodentia: murid (common field rat)
<i>E. gazella</i>	24 x 20	Artiodactyla: bovid (black-tailed gazelle)
<i>E. genettae</i> (<i>species inquirenda</i>)	25 x 19	Carnivora: viverrid (common genet)
<i>E. genitali</i>		Rodentia: cricetid (golden hamster)
<i>E. geomydis</i>	13 x 12	Rodentia: geomyid (plains pocket gopher)
<i>E. gerbilli</i>	21 x 16	Rodentia: murid (greater Egyptian gerbil)
<i>E. giganteos</i>	33 x 28	Rodentia: sciurid (black-tailed prairie dog; gray marmot, bobak marmot, groundhog)
<i>E. gilruthi</i>	nd	Artiodactyla: bovid (sheep, goat, Siberian ibex)
<i>E. glauceae</i>		Rodentia: cricetid (eastern woodrat)
<i>E. glaucomydis</i>	16 x 12	Rodentia: sciurid (southern flying squirrel)
<i>E. gliris</i>	21 x 16	Rodentia: glirid (fat dormouse)
<i>E. globula</i>	21 x 20	Eulipotyphla: talpid (European mole)
<i>E. godmani</i>	30 x 17	Diprotodontia: macropodid (Godman's rock wallaby, allied rock wallaby, black-flanked rock wallaby)
<i>E. gokaki</i>	27 x 21	Artiodactyla: bovid (water buffalo)
<i>E. golemanskii</i>		Rodentia: murid (wood mouse, yellow-necked mouse)
<i>E. gomurchaica</i>	29 x 24	Rodentia: cricetid (common vole)
<i>E. gomurica</i>	27 x 21	Rodentia: murid (wood mouse)
<i>E. gonocilia</i>	29 x 24	Eulipotyphla: talpid (Japanese shrew mole)
<i>E. gonzalezi</i>	32 x 22	Artiodactyla: bovid (sheep)
<i>E. gorgonis</i>	23 x 17	Artiodactyla: bovid (blue wildebeest)
<i>E. gousseffi</i>		Rodentia: murid (short-tailed bandicoot rat)
<i>E. goussevi</i>	22 x 16	Eulipotyphla: talpid (European mole)
<i>E. gozaishoensis</i>	29 x 21	Artiodactyla: bovid (Taiwan serow)
<i>E. granifera</i>		Rodentia: ctenomyid (highland tuco-tuco)
<i>E. granulosa</i>	29 x 21	Artiodactyla: bovid (sheep, bighorn) (early reports include goat)
<i>E. groenlandica</i>		Lagomorpha: leporid (Arctic hare)
<i>E. gubleri</i> (<i>species inquirenda</i>)	20	Primates: hominid (human) liver?
<i>E. guentherii</i>		Rodentia: cricetid (Gunther's vole)
<i>E. guevarai</i>	28 x 16	Artiodactyla: suid (pig)
<i>E. gumbaschica</i>	17	Rodentia: murid (wood mouse)
<i>E. gundii</i>		Rodentia: ctenodactylid (common gundi)
<i>E. gungahlinensis</i>	17 x 15	Diprotodontia: macropodid (western grey kangaroo, western grey kangaroo)
<i>E. haberfeldi</i>	30 x 20	Didelphimorpha: didelphid (bare-tailed woolly opossum)
<i>E. hadrutica</i>	21 x 17	Rodentia: cricetid (social vole)
<i>E. halli</i>	24 x 17	Rodentia: murid (brown rat)
<i>E. hammondi</i>	27 x 21	Carnivora: felid (jungle cat)
<i>E. hansonorum</i>	18 x 16	Rodentia: murid (house mouse)
<i>E. haranica</i>		Rodentia: spalacid (Middle East blind mole-rat)
<i>E. harbelensis</i>	32 x 23	Rodentia: murid (rusty-bellied brush-furred rat)
<i>E. hartmanni</i>	23 x 14	Carnivora: felid (tiger, leopard, panther)
<i>E. hasei</i>	18 x 14	Rodentia: murid (black rat)
<i>E. hegneri</i>	17 x 12	Artiodactyla: cervid (red deer, elk)
<i>E. heissini</i>	20	Carnivora: canid (corsac fox)
<i>E. hessei</i>	18	Chiroptera: rhinolophid (lesser horseshoe bat)
<i>E. hestermani</i>	66 x 47	Diprotodontia: macropodid (eastern grey kangaroo, western grey kangaroo, red-necked wallaby, black-striped wallaby, tammar wallaby)
<i>E. heterocapita</i>	26 x 21	Eulipotyphla: talpid (American shrew mole)
<i>E. heterocephali</i>	ns	Rodentia: heterocephalid (naked mole-rat)

<i>(species inquirenda)</i>		
<i>E. hiepei</i>	17 x 13	Carnivora: mustelid (European mink, American mink)
<i>E. hindlei</i>	23 x 19	Rodentia: murid (house mouse)
<i>E. hippuri</i>	35 x 22	Rodentia: sciurid (horse-tailed squirrel)
<i>E. hirci</i>	23 x 18	Artiodactyla: bovid (goat, wild goat, Siberian ibex, alpine ibex)
<i>E. hispidensis</i>		Rodentia: heteromyid (hispid pocket mouse)
<i>E. hoffmeisteri</i>	18 x 16	Rodentia: sciurid (spotted ground squirrel)
<i>E. holmesi</i>		Lagomorpha: leporid (snowshoe hare)
<i>E. honessi</i>	28 x 20	Lagomorpha: leporid (eastern cottontail, desert cottontail, mountain cottontail)
<i>E. honshuensis</i>	16 x 11	Eulipotyphla: talpid (True's shrew mole, Japanese shrew mole)
<i>E. hudsonii</i>		Rodentia: dipodid (meadow jumping mouse)
<i>E. humboldtensis</i>	23 x 21	Chiroptera: vespertilionid (California myotis)
<i>E. hungarica</i>	14 x 13	Lagomorpha: leporid (European hare, Indian hare)
<i>E. hungaryensis</i>	20 x 18	Rodentia: murid (yellow-necked mouse, wood mouse, striped field mouse)
<i>E. hydrochoeri</i>	21 x 19	Rodentia: caviid (capybara)
<i>E. hylopetis</i>	35 x 24	Rodentia: sciurid (red-cheeked flying squirrel)
<i>E. hypsiprymmodontis</i>	29 x 23	Diprotodontia: hypsiprymodontid (musky rat-kangaroo)
<i>E. ibicis</i>	27 x 18	Artiodactyla: bovid (ibex)
<i>E. ibrahimovae</i>	25 x 22	Artiodactyla: suid (pig)
<i>E. ichiloensis</i>		Rodentia: hydrochaerid (capybara)
<i>E. ictidea</i>	24 x 18	Carnivora: mustelid (European polecat, black-footed ferret, steppe polecat, American mink)
<i>E. idmii</i>	42 x 30	Artiodactyla: bovid (Arabian mountain gazelle)
<i>E. ildefonsoi</i>	42 x 28	Artiodactyla: bovid (cattle)
<i>E. illinoisensis</i>	27 x 21	Artiodactyla: bovid (cattle)
<i>E. imantauica</i> <i>(species inquirenda)</i>	14 x 10	Carnivora: canid (Arctic fox)
<i>E. immodulata</i>	24 x 17	Rodentia: cricetid (grey dwarf hamster)
<i>E. impalae</i>	33 x 22	Artiodactyla: bovid (impala)
<i>E. indianensis</i>	18 x 16	Didelphimorphia: didelphid (North American opossum)
<i>E. inornata</i>	35 x 20	Diprotodontia: macropodid (unadorned rock wallaby, black-flanked rock wallaby, brush-tailed rock wallaby)
<i>E. intestinalis</i>	27 x 18	Lagomorpha: leporid (rabbit)
<i>E. intricata</i>	46 x 33	Artiodactyla: bovid (sheep, bighorn, mouflon) (early reports include goat)
<i>E. inundatus</i>	22 x 15	Rodentia: murid (striped field mouse)
<i>E. inuyamensis</i>		Rodentia: murid (small Japanese field mouse, large Japanese field mouse)
<i>E. inyoni</i>	22 x 19	Eulipotyphla: soricid (Inyo shrew)
<i>E. iradiensis</i>	25 x 21	Rodentia: murid (common vole)
<i>E. iraqiensis</i>		Artiodactyla: camelid (Arabian camel)
<i>E. irara</i>	23 x 19	Carnivora: mustelid (tayra)
<i>E. irresidua</i>	38 x 26	Lagomorpha: leporid (rabbit, eastern cottontail)
<i>E. ismailovi</i>	28 x 24	Artiodactyla: bovid (saiga antelope)
<i>E. iturina</i>	23 x 18	Artiodactyla: bovid (blue duiker)
<i>E. ivensae</i>	33 x 21	Artiodactyla: cervid (mule deer)
<i>E. ivgeeltensis</i>	28 x 23	Rodentia: murid (Mongolian jird)
<i>E. iwanoffi</i>	22 x 18	Rodentia: cricetid (common vole)
<i>E. jacksonensis</i>	23 x 18	Chiroptera: vespertilionid (evening bat)
<i>E. jakunini</i>		Rodentia: dipodid (Tien Shan birch mouse)
<i>E. jalpaiguriensis</i>	22 x 19	Carnivora: herpestid (Indian gray mongoose)
<i>E. jardimlinica</i>	25 x 19	Rodentia: cricetid (grey dwarf hamster)
<i>E. jemezi</i>		Rodentia: geomyid (northern pocket gopher)
<i>E. jerfinica</i>	26 x 22	Rodentia: murid (wood mouse)
<i>E. jersenic</i>		Rodentia: murid (Libyan jird)
<i>E. jiroveci</i>	28 x 26	Rodentia: capromyid (Desmarest's hutia)
<i>E. jolchijevi</i>	31 x 22	Artiodactyla: bovid (goat)
<i>E. joyeuxi</i>	26 x 21	Rodentia: dipodid (great jerboa)
<i>E. jurschuaensis</i>	34 x 27	Rodentia: murid (Vinogradov's jird)

<i>E. kairiensis</i>	13 x 12	Diprotodontia: hypsiprymnodontid (musky rat-kangaroo)
<i>E. kamoshika</i>	30 x 15	Artiodactyla: bovid (Japanese serow)
<i>E. kanchili</i>	11	Artiodactyla: tragulid (Java mouse-deer)
<i>E. kanyana</i>	19 x 18	Peramelemorphia: peramelid (western barred bandicoot)
<i>E. karschinica</i>		Rodentia: murid (midday jird)
<i>E. katangensis</i>	41 x 25	Artiodactyla: bovid (Defassa waterbuck)
<i>E. kaunensis</i>		Rodentia: murid (striped field mouse)
<i>E. kazakhstanensis</i>	28 x 24	Rodentia: cricetid (northern mole vole)
<i>E. keilini</i>	29 x 19	Rodentia: murid (house mouse)
<i>E. keithi</i>		Lagomorpha: leporid (snowshoe hare)
<i>E. khurodensis</i>	42 x 29	Artiodactyla: bovid (cattle)
<i>E. kinsellai</i>	27 x 17	Rodentia: cricetid (marsh rice rat)
<i>E. klondikensis</i>		Lagomorpha: ochotonid (collared pika, northern pika, American pika)
<i>E. kniplingi</i>	24 x 14	Rodentia: sciurid (fox squirrel)
<i>E. knoxjonesi</i>	17 x 12	Rodentia: cricetid (white-ankled mouse)
<i>E. kobi</i>	38 x 28	Artiodactyla: bovid (defassa waterbuck)
<i>E. kocharii</i>	45 x 37	Artiodactyla: bovid (goat, ibex, Siberian ibex)
<i>E. kogoni</i>	37 x 21	Diprotodontia: macropodid (eastern grey kangaroo)
<i>E. kolabski</i>	29 x 24	Rodentia: cricetid (social vole)
<i>E. kolanica</i>	21 x 19	Rodentia: cricetid (common vole)
<i>E. komareki</i>	16 x 14	Eulipotyphla: soricid (common shrew)
<i>E. kostencovi</i>	33 x 28	Rodentia: murid (midday jird, Mongolian jird)
<i>E. kosti</i>	15 x 14	Artiodactyla: bovid (cattle)
<i>E. kotuji</i>		Rodentia: cricetid (Middendorf's vole)
<i>E. krijgsmanni</i>	22 x 15	Rodentia: murid (house mouse)
<i>E. krilovi</i>	35 x 29	Rodentia: murid (Persian jird)
<i>E. kruidenieri</i>	29 x 19	Rodentia: murid (rusty-bellied brush-furred rat)
<i>E. kuhliensis</i>	28 x 26	Chiroptera: vespertilionid (Kuhl's pipistrelle)
<i>E. kunmingensis</i>	18 x 16	Chiroptera: vespertilionid (Rickett's big-footed bat)
<i>E. kvienae</i>	41 x 35	Rodentia: murid (midday jird)
<i>E. lachrymalis</i>		Rodentia: murid (cactus mouse)
<i>E. ladronensis</i>		Rodentia: cricetid (white-throated woodrat)
<i>E. lagorchestis</i>	48 x 27	Diprotodontia: macropodid (spectacled hare-wallaby)
<i>E. lagostomi</i>		Rodentia: chinchillid (plains viscacha)
<i>E. lalahanensis</i>		Rodentia: spalacid (lesser mole-rat)
<i>E. lamae</i>	36 x 25	Artiodactyla: camelid (llama)
<i>E. lancasterensis</i>	25 x 17	Rodentia: sciurid (red squirrel, fox squirrel)
<i>E. landersi</i>	25 x 24	Rodentia: hystricid (long-tailed porcupine)
<i>E. langebarteli</i>	21 x 14	Rodentia: cricetid (brush mouse, white-footed mouse, pinyon mouse)
<i>E. lateralis</i> (syn. <i>E. beldingii</i> , <i>E. sarseni</i> , <i>E. tuscarorensis</i> , <i>E. wisconsinensis</i> , <i>E. larimerensis</i>)	35 x 27	Rodentia: sciurid (Gunnison's prairie dog, white-tailed prairie dog, black-tailed prairie dog, gray marmot, bobak marmot, groundhog, Uinta ground squirrel, California ground squirrel, Belding's ground squirrel, Columbian ground squirrel, Wyoming ground squirrel, golden-mantled ground squirrel, Richardson's ground squirrel, spotted ground squirrel, Townsend's ground squirrel, thirteen-lined ground squirrel, rock squirrel, California chipmunk, eastern chipmunk)
<i>E. lavieri</i>	17	Rodentia: dipodid (great jerboa)
<i>E. lemniscomysis</i>	28 x 19	Rodentia: murid (typical striped grass mouse)
<i>E. lemuris</i>	51 x 41	Primates: galagid (Senegal bushbaby)
<i>E. leporis</i>	32 x 16	Lagomorpha: leporid (European hare, Tolai hare, Cape hare, mountain hare, snowshoe hare, Indian hare, eastern cottontail)
<i>E. lerikaensis</i>	19 x 16	Rodentia: murid (Persian jird)
<i>E. leuckarti</i>	80 x 60	Perissodactyla: equid (horse, ass)
<i>E. leucodonica</i>		Rodentia: spalacid (lesser mole-rat)
<i>E. leucodontis</i>	21	Eulipotyphla: soricid (bicoloured white-toothed shrew)
<i>E. leucopi</i>	19 x 17	Rodentia: cricetid (white-footed mouse)
<i>E. levinei</i>	22 x 18	Chiroptera: molossid (gland-tailed free-tailed bat)
<i>E. li</i>	31 x 23	Carnivora: canid (red fox)
<i>E. liberiensis</i>	24 x 17	Rodentia: murid (rusty-bellied brush-furred rat)
<i>E. liomysis</i>	20 x 17	Rodentia: heteromyid (painted spiny pocket mouse, Mexican spiny pocket mouse)

<i>E. lipura</i>	33 x 24	Rodentia: hystricid (long-tailed porcupine)
<i>E. lobato</i>	31 x 23	Artiodactyla: cervid (Mazama deer coprolites)
<i>E. lomarii</i>	27 x 21	Carnivora: canid (Bengal fox)
<i>E. longirostris</i>	17 x 16	Eulipotyphla: soricid (masked shrew, Inyo shrew, Maryland shrew, smoky shrew, Hayden's shrew, southeastern shrew, montane shrew, ornate shrew, Pacific shrew, northern water shrew, Trowbridge shrew)
<i>E. lophuromysis</i>	21 x 14	Rodentia: murid ((rusty-bellied brush-furred rat)
<i>E. ludoviciani</i>	21 x 18	Rodentia: sciurid (white-tailed prairie dog, black-tailed prairie dog)
<i>E. luisieri</i>	33 x 24	Rodentia: sciurid (red squirrel)
<i>E. lumholtzi</i>	22 x 11	Diprotodontia: macropodid (Lumholtz's tree-kangaroo)
<i>E. lupi</i>		Carnivora: canid (common wolf)
<i>E. luteola</i>		Rodentia: cricetid (Middenorf's vole)
<i>E. lutescensis (lutescenae)</i>		Rodentia: cricetid (Transcaucasian mole vole)
<i>E. lynx</i>		Carnivora: felid (Eurasian lynx)
<i>E. maarmosopos</i>		Didelphimorphia: didelphid (Dorothy's slender opossum)
<i>E. macarthuri</i>	18 x 17	Rodentia: murid (Cordillera striped shrew-rat)
<i>E. macieli</i>	30 x 21	Artiodactyla: bovid (waterbuck)
<i>E. macropodis</i> (syn. <i>E. fausti</i> , <i>E. cunnamullensis</i> , <i>E. purchasei</i>)	26 x 13	Diprotodontia: macropodid (red-necked wallaby, eastern grey kangaroo, western grey kangaroo, red kangaroo, western brush wallaby, whiptail wallaby, black-striped wallaby, tammar wallaby, parma wallaby)
<i>E. macrosculpta</i>		Lagomorpha: leporid (European hare)
<i>E. macrotis</i>	32 x 19	Carnivora: canid (kit fox)
<i>E. macusaniensis</i>	94 x 67	Artiodactyla: camelid (alpaca)
<i>E. macyi</i>	19 x 18	Chiroptera: vespertilionid (tricoloured bat)
<i>E. madagascariensis</i>	16 x 15	Eulipotyphla: tenrecid (greater hedgehog tenrec)
<i>E. madisonensis</i>	16 x 15	Artiodactyla: cervid (mule deer)
<i>E. magna</i>	35 x 24	Lagomorpha: leporid (rabbit, black-tailed jackrabbit, eastern cottontail, European hare, Arctic hare)
<i>E. magnirostrumi</i>	24 x 21	Chiroptera: phyllostomid (brown tent-making bat)
<i>E. maior</i>	48 x 30	Lagomorpha: leporid (mountain cottontail, eastern cottontail, desert cottontail)
<i>E. majorici</i>	23 x 17	Rodentia: cricetid (Major's pine vole, common vole)
<i>E. malabaricas</i>		Rodentia: sciurid (jungle palm squirrel)
<i>E. malayensis</i>	38 x 20	Rodentia: sciurid (spotted giant flying squirrel, red giant flying squirrel)
<i>E. manafovae</i>	37 x 21	Artiodactyla: bovid (saiga antelope)
<i>E. manatus</i>		Sirenia: trichechid (West Indian manatee)
<i>E. mansonbahri (species inquirenda)</i>	46 x 34	Primates: hominid (human)
<i>E. marajoensis</i>		Xenarthra: myrmecophagid (collared anteater)
<i>E. maralikiensis</i>		Rodentia: spalacid (lesser mole-rat)
<i>E. marasensis</i>		Rodentia: spalacid (Middle East blind mole-rat)
<i>E. marconii</i>	13 x 11	Rodentia: cricetid (southern red-backed vole, northern red-backed vole)
<i>E. markovi</i>	32 x 26	Rodentia: murid (tamarisk jird)
<i>E. marmotae</i>	51 x 42	Rodentia: sciurid (alpine marmot)
<i>E. marmosopos</i>	22 x 20	Didelphimorphia: didelphid (Dorothy's slender opossum, common opossum)
<i>E. marsica</i>	19 x 13	Artiodactyla: bovid (sheep)
<i>E. marsupialium</i>	22 x 18	Diprotodontia: macropodid (western grey kangaroo, eastern grey kangaroo)
<i>E. martunica</i>	26 x 22	Rodentia: murid (Libyan jird)
<i>E. masseysensis</i>		Artiodactyla: bovid (goat)
<i>E. mastomyis</i>	27 x 21	Rodentia: murid (Natal multimammate mouse)
<i>E. mathurai</i>	22 x 19	Carnivora: felid (jungle cat)
<i>E. matschoulskyi</i>	24 x 17	Rodentia: cricetid (Chinese striped hamster)
<i>E. matsubayashii</i>	25 x 18	Lagomorpha: leporid (rabbit)
<i>E. mayeri</i>	17 x 15	Artiodactyla: cervid (reindeer)
<i>E. mccordocki</i>	35 x 27	Artiodactyla: cervid (mule deer, white-tailed deer)
<i>E. media</i>	31 x 19	Lagomorpha: leporid (rabbit, black-tailed jackrabbit, eastern cottontail, mountain cottontail)
<i>E. mehelyi</i>	41 x 35	Chiroptera: rhinolophid (Mehely's horseshoe bat)

<i>E. mehlhorni</i>		Rodentia: murid (African grass rat)
<i>E. melanuri</i>	<i>sp. inquir.</i>	Rodentia: myoxid (garden dormouse, Asian garden dormouse)
<i>E. melis</i>	20 x 16	Carnivora: mustelid (European badger, American mink)
<i>E. menzbieri</i>	24 x 21	Rodentia: sciurid (Menzbier's marmot)
<i>E. mephitidis</i> (<i>species inquirenda</i>)	21 x 19	Carnivora: mustelid (striped skunk, eastern spotted skunk, ferret?)
<i>E. meridiana</i>	25 x 20	Rodentia: murid (midday jird)
<i>E. merionis</i>	19 x 15	Rodentia: murid (Mongolian gerbil, tamarisk jird)
<i>E. merriami</i>		Rodentia: heteromyid (Merriam's kangaroo rat)
<i>E. mesnili</i> (<i>species inquirenda</i>)	18 x 14	Carnivora: canid (Arctic fox)
<i>E. metelkini</i>	24 x 19	Lagomorpha: ochotonid (Daurian pika)
<i>E. micouri</i>	25 x 18	Didelphimorphia: didelphid (white-bellied woolly mouse opossum)
<i>E. micromydis</i>		Rodentia: murid (harvest mouse)
<i>E. micropiliana</i>	23 x 19	Rodentia: cricetid (social vole)
<i>E. micropylifera</i>		Rodentia: sciurid (Hodgson's giant flying squirrel)
<i>E. microspalacis</i>	9 x 6	Rodentia: spalacid (Middle-East blind mole-rat)
<i>E. microtina</i>	17 x 15	Rodentia: cricetid (social vole)
<i>E. middendorfi</i>		Rodentia: cricetid (Middendorf's vole)
<i>E. migratoria</i>	19	Rodentia: cricetid (grey dwarf hamster)
<i>E. milleri</i>	15 x 14	Eulipotyphla: soricid (Fraser's musk shrew)
<i>E. minasensis</i>	35 x 26	Artiodactyla: bovid (goat)
<i>E. minima</i>	13 x 11	Lagomorpha: leporid (eastern cottontail)
<i>E. mira</i>	36 x 24	Rodentia: sciurid (red squirrel)
<i>E. mirgai</i>	49 x 30	Artiodactyla: bovid (blackbuck)
<i>E. miyairii</i> (syn. <i>E. carinii</i>)	22 x 17	Rodentia: murid (black rat, brown rat, Whitehead's spiny rat, Malayan field rat)
<i>E. modesta</i>	21 x 20	Scandentia: tupaiid (common treeshrew)
<i>E. moelleri</i>	25 x 16	Rodentia: sciurid (eastern gray squirrel)
<i>E. mohavensis</i>	24 x 16	Rodentia: heteromyid (Panamint kangaroo rat, plus experimental infections in Merriam's kangaroo rat, Fresno kangaroo rat, Heermann's kangaroo rat, desert kangaroo rat, agile kangaroo rat)
<i>E. molossi</i>	24 x 18	Chiroptera: molossid (black mastiff bat)
<i>E. monacis</i> (syn. <i>E. dura</i>)	20 x 18	Rodentia: sciurid (grey marmot, bobak marmot, alpine marmot, Menzbier's marmot, groundhog, Tarbagan marmot)
<i>E. monocrustae</i>	27 x 24	Rodentia: cricetid (common vole)
<i>E. montanaensis</i>	19 x 15	Artiodactyla: bovid (Rocky Mountain goat)
<i>E. montgomeryae</i>		Rodentia: murid (wood mouse, small Japanese field mouse, large Japanese field mouse, Korean field mouse, Japanese wood mouse)
<i>E. montuosi</i>		Rodentia: ctenomyid (highland tuco-tuco)
<i>E. morainensis</i>	20 x 20	Rodentia: sciurid (Gunnison's prairie dog, white-tailed prairie dog, black-tailed prairie dog, yellow-bellied marmot, Wyoming ground squirrel, golden-mantled ground squirrel, Richardson's ground squirrel, Townsend's ground squirrel, thirteen-lined ground squirrel, rock squirrel)
<i>E. moreli</i>	29 x 22	Rodentia: nesomyid (Gambian pouched rat)
<i>E. moschati</i>	21 x 17	Artiodactyla: bovid (muskox)
<i>E. moschus</i>		Rodentia: sciurid (Eurasian red squirrel)
<i>E. motleiensis</i>	17 x 15	Eulipotyphla: talpid (eastern mole)
<i>E. mrigai</i>	49 x 30	Artiodactyla: bovid (blackbuck)
<i>E. mucosa</i>		Diprotodontia: macropodid (brush-tailed rock-wallaby)
<i>E. muehlensi</i>	36 x 27	Artiodactyla: cervid (reindeer)
<i>E. muhlensi</i>	36 x 27	Artiodactyla: cervid (reindeer)
<i>E. mundaragi</i>	37 x 27	Artiodactyla: bovid (zebu)
<i>E. mundayi</i>	17 x 16	Diprotodontia: potoroid (long-nosed potoroo)
<i>E. murinus</i>	19 x 16	Eulipotyphla: soricid (Asian house shrew)
<i>E. muris</i>	21 x 15	Rodentia: murid (wood mouse)
<i>E. musajevi</i>	28 x 25	Rodentia: murid (Vinogradov's jird)
<i>E. musculi</i>	24	Rodentia: murid (house mouse)
<i>E. musculoidei</i>	20 x 17	Rodentia: murid (Temminck's mouse)
<i>E. mustelae</i>	22 x 19	Carnivora: mustelid (least weasel, American mink)

<i>E. muuli</i>		Rodentia: murid (pencil-tailed tree mouse)
<i>E. mykhtowyczi</i>	31 x 18	Diprotodontia: macropodid (agile wallaby, antilopine wallaroo, whiptail wallaby)
<i>E. myocastori</i>	14 x 12	Rodentia: echimyid (coyppu)
<i>E. myopotami</i>	23 x 22	Rodentia: echimyid (coyppu)
<i>E. myotis</i> (<i>species inquirenda</i>)	15 x 14	Chiroptera: vespertilionid (greater mouse-eared bat)
<i>E. myoxi</i>	18 x 15	Rodentia: glirid (garden dormouse, Asian garden dormouse)
<i>E. nachitschevanica</i>	24 x 19	Rodentia: glirid (forest dormouse)
<i>E. naganoensis</i>	20 x 16	Artiodactyla: bovid (Japanese serow)
<i>E. nagpurensis</i>	23 x 13	Lagomorpha: leporid (rabbit)
<i>E. nana</i>	17 x 15	Artiodactyla: bovid (Siberian ibex, mouflon)
<i>E. nasuae</i>	18 x 16	Carnivora: procyonid (white-nosed coati)
<i>E. nasuta</i>		Rodentia: sciurid (Hodgson's giant flying squirrel)
<i>E. nativa</i>		Rodentia: cricetid (Siberian brown lemming)
<i>E. naye</i>	20 x 13	Rodentia: murid (wood mouse)
<i>E. nazijrovi</i>		Artiodactyla: bovid (Siberian ibex)
<i>E. nehramaensis</i>	20 x 18	Rodentia: murid (Shaw's jird, Tristram's jird)
<i>E. neitzi</i>	32 x 30	Artiodactyla: bovid (impala)
<i>E. neodebliecki</i>	21 x 16	Artiodactyla: suid (pig)
<i>E. neoirresidua</i>	26 x 18	Lagomorpha: leporid (desert cottontail)
<i>E. neoleporis</i>	39 x 20	Lagomorpha: leporid (eastern cottontail, rabbit)
<i>E. neomyi</i>	18 x 17	Eulipotyphla: soricid (southern water shrew, northern water shrew)
<i>E. neosciuri</i>	25 x 16	Rodentia: sciurid (eastern grey squirrel, red squirrel)
<i>E. neotomae</i>	22 x 16	Rodentia: murid (dusky-footed woodrat)
<i>E. nereensis</i>		Rodentia: murid (wood mouse)
<i>E. nesokiae</i>		Rodentia: murid (short-tailed bandicoot rat)
<i>E. neurotrichi</i>	18 x 14	Eulipotyphla: talpid (American shrew mole)
<i>E. newalai</i>	19 x 15	Carnivora: herpestid (Indian gray mongoose)
<i>E. nieschulzi</i>	23 x 18	Rodentia: murid (black rat, brown rat, pygmy rice rat, red spiny rat, Hawaiian rat, Sunda rat)
<i>E. nigricani</i>	19 x 17	Chiroptera: vespertilionid (black myotis)
<i>E. nihonis</i>	30 x 21	Artiodactyla: bovid (Japanese serow)
<i>E. nilgai</i>	21 x 18	Artiodactyla: bovid (nilgai)
<i>E. ninakohlyakimovae</i>	24 x 19	Artiodactyla: bovid (goat, wild goat, ibex, Siberian ibex)(early reports include black-tailed gazelle, sheep, bighorn sheep, mouflon, snow sheep, Barbary sheep, urial)
<i>E. nitedulae</i>	27 x 24	Rodentia: glirid (forest dormouse)
<i>E. nocti</i>	17 x 14	Rodentia: murid (black rat, brown rat)
<i>E. nodulosa</i>		Sirenia: trichechid (West Indian manatee)
<i>E. noelleri</i>	19	Rodentia: cuniculid (lowland paca)
<i>E. noraschenica</i>	23 x 21	Rodentia: murid (Persian jird)
<i>E. nordensheldi</i>	17 x 14	Rodentia: cricetid (Arctic lemming)
<i>E. normanlevinei</i>	35 x 28	Rodentia: capromyid (Desmarest's hutia)
<i>E. notati</i>	39 x 33	Rodentia: sciurid (plains squirrel)
<i>E. novowenyoni</i> (<i>species inquirenda</i>)	15	Carnivora: felid (tiger, leopard, panther)
<i>E. nutriae</i>	20 x 16	Rodentia: echimyid (coyppu)
<i>E. nuttalli</i>	20 x 14	Carnivora: procyonid (raccoon, pygmy raccoon)
<i>E. nyctali</i>	20 x 18	Chiroptera: vespertilionid (common noctule)
<i>E. nycticebi</i>	17	Primates: lorisid (Sunda slow loris)
<i>E. obendorfi</i>	30 x 16	Diprotodontia: macropodid (Tasmanian pademelon)
<i>E. obitzwadowski</i>		Rodentia: echimyid (coyppu)
<i>E. occidentalis</i>	23 x 18	Diprotodontia: macropodid (black-flanked rock wallaby, short-eared rock wallaby, Rothschild's rock wallaby)
<i>E. ochotona</i>	20 x 14	Lagomorpha: ochotonid (Daurian pika)
<i>E. ochrogasteri</i>	29 x 23	Rodentia: cricetid (prairie vole, Mexican vole, tundra vole, singing vole, meadow vole)
<i>E. odocoilei</i>	27 x 24	Artiodactyla: cervid (mule deer, white-tailed deer)
<i>E. ojasii</i>	17 x 13	Rodentia: cricetid (Tome's rice rat)
<i>E. ondatrazibethicae</i>	22 x 18	Rodentia: cricetid (muskrat)

<i>E. ontarioensis</i>	37 x 24	Rodentia: sciurid (eastern grey squirrel, fox squirrel, Abert's squirrel)
<i>E. onychomysis</i>	20 x 19	Rodentia: murid (northern grasshopper mouse)
<i>E. oomingmakensis</i>	48 x 34	Artiodactyla: bovid (muskox)
<i>E. operculata</i>	32 x 20	Rodentia: cricetid (Stephen's woodrat)
<i>E. opimi</i>		Rodentia: ctenomyid (highland tuco-tuco)
<i>E. ordubadica</i>	26 x 23	Rodentia: murid (Persian jird)
<i>E. oreamni</i>	29 x 19	Artiodactyla: bovid (mountain goat)
<i>E. orthogeomydos</i>	13 x 11	Rodentia: geomyid (giant pocket gopher)
<i>E. oruroensis</i>		Rodentia: ctenomyid (highland tuco-tuco)
<i>E. oryctolagi</i>	37 x 19	Lagomorpha: leporid (rabbit)
<i>E. oryzomysi</i>	24 x 17	Rodentia: cricetid (rice rat?)
<i>E. os</i>	24 x 20	Rodentia: sciurid (bobak marmot, grey marmot, long-tailed marmot, Menzbier's marmot, Tarbagan marmot, groundhog)
<i>E. ostertagi</i>	33 x 27	Eulipotyphla: erinaceid (European hedgehog)
<i>E. otolicni</i>	26 x 25	Primates: galagid (Senegal bushbaby)
<i>E. otomyis</i>	20 x 15	Rodentia: murid (Southern African vlei rat)
<i>E. ovata</i>	26 x 17	Rodentia: sciurid (golden-mantled ground squirrel, eastern chipmunk, gray-collared chipmunk)
<i>E. ovibovis</i>	23 x 19	Artiodactyla: bovid (muskox)
<i>E. ovina</i>	27 x 20	Artiodactyla: bovid (sheep, bighorn sheep, argali, mouflon)
<i>E. ovinoidalis</i>	24 x 20	Artiodactyla: bovid (sheep, bighorn, mouflon)
<i>E. ovoidalis</i>	36 x 24	Artiodactyla: bovid (water buffalo)
<i>E. oytuni</i>	25 x 19	Rodentia: spalacid (Middle East blind mole-rat)
<i>E. pachydactyli</i>		Primates: lorisisid (greater slow loris)
<i>E. pachylepyron</i>	35 x 32	Primates: lorisisid (greater slow loris)
<i>E. pahangi</i>	35 x 31	Rodentia: sciurid (plains squirrel)
<i>E. pallasi</i>	26 x 21	Lagomorpha: ochotonid (Pallas's pika)
<i>E. pallida</i>	16 x 12	Artiodactyla: bovid (sheep, goat, ibex)
<i>E. palustris</i>	24 x 18	Rodentia: cricetid (marsh rice rat)
<i>E. panda</i>	30 x 17	Artiodactyla: cervid (European roe deer)
<i>E. pandei</i>	23 x 19	Carnivora: herpestid (Indian gray mongoose)
<i>E. panguii</i>	48 x 32	Artiodactyla: bovid (African dwarf goat)
<i>E. papillata</i>	22 x 19	Rodentia: murid (house mouse)
<i>E. paraensis</i>	37 x 33	Rodentia: dasyproctid (red-rumped agouti)
<i>E. paragachaica</i>	28 x 22	Rodentia: murid (house mouse)
<i>E. parahi</i>	18 x 14	Artiodactyla: cervid (Indian hog deer)
<i>E. parasciurorum</i>	29 x 16	Rodentia: sciurid (southern flying squirrel)
<i>E. parastiedica</i>	27 x 26	Eulipotyphla: talpid (American shrew mole)
<i>E. parma</i>	21 x 12	Diprotodontia: macropodid (parma wallaby)
<i>E. parryi</i>	29 x 13	Diprotodontia: macropodid (whiptail wallaby)
<i>E. parva</i> (syn. <i>E. galouzoi</i>)	17 x 13	Artiodactyla: bovid (sheep, bighorn, mouflon, argali, urial) (early reports in goat, ibex, Siberian ibex)
<i>E. patavina</i>	24 x 16	Artiodactyla: cervid (European roe deer)
<i>E. paulistana</i>	43 x 24	Lagomorpha: leporid (Brazilian cottontail, eastern cottontail)
<i>E. pavlovskiyi</i>	23 x 19	Rodentia: dipodid (Mongolian five-toed jerboa)
<i>E. pecari</i>		Artiodactyla: tayassuid (collared peccary)
<i>E. pelandoki</i>	18 x 17	Artiodactyla: tragulid (Java mouse-deer)
<i>E. pellerdyi</i>	23 x 13	Artiodactyla: camelid (Bactrian camel)
<i>E. pellita</i>	40 x 28	Artiodactyla; bovid (cattle, zebu)
<i>E. pellucida</i>	35 x 21	Rodentia: echimyid (coyupu)
<i>E. penicillati</i>	18 x 15	Rodentia: heteromyid (desert pocket mouse, silky pocket mouse)
<i>E. perardi</i>	20 x 15	Eulipotyphla: erinaceid (European hedgehog)
<i>E. perforans</i>	25 x 15	Lagomorpha: leporid (rabbit, snowshoe hare, black-tailed jackrabbit, eastern cottontail, European hare, Arctic hare)
<i>E. perforoides</i>	23 x 18	Rodentia: sciurid (groundhog)
<i>E. perminuta</i>	14 x 12	Artiodactyla: suid (pig)
<i>E. perognathi</i>	20 x 15	Rodentia: heteromyid (rock pocket mouse)
<i>E. peromysci</i>	29 x 24	Rodentia: cricetid (pinyon mouse, North American deer mouse)
<i>E. peruviana</i>	32 x 19	Artiodactyla: camelid (llama)
<i>E. peschankae</i>	22 x 21	Rodentia: murid (tamarisk jird)
<i>E. petauristae</i>	50 x 38	Rodentia: sciurid (red giant flying squirrel)

<i>E. petrogale</i>	23 x 14	Diprotodontia: macropodid (allied rock wallaby, Godman's rock wallaby, unadorned rock wallaby, black-flanked rock wallaby, brush-tailed rock wallaby, Proserpine rock wallaby)
<i>E. philanderi</i>	24 x 22	Didelphimorphia: didelphid (gray four-eyed opossum)
<i>E. phocae</i>	44 x 27	Pinnipedia: phocid (harbour seal, gray seal)
<i>E. phyllotis</i>	26 x 14	Rodentia: murid (friendly leaf-eared mouse)
<i>E. picti</i>	26 x 23	Rodentia: heteromyid (painted spiny pocket mouse)
<i>E. pilarensis</i>	15 x 14	Chiroptera: vespertilionid (western small-footed bat)
<i>E. pileata</i>	25 x 23	Rodentia: cricetid (southern red-backed vole)
<i>E. pintoensis</i>	24 x 16	Lagomorpha: leporid (Brazilian cottontail)
<i>E. pipistrellus</i>	25 x 23	Chiroptera: vespertilionid (Kuhl's pipistrelle)
<i>E. piriformis</i>	29 x 18	Lagomorpha: leporid (rabbit)
<i>E. pitymydis</i>		Rodentia: cricetid (European pine vole)
<i>E. plecoti</i> (<i>species inquirenda</i>)	16 x 14	Chiroptera: vespertilionid (brown long-eared bat)
<i>E. polaris</i>	30 x 18	Artiodactyla: cervid (reindeer)
<i>E. polessica</i> (syn. <i>E. musaevi</i>)	25 x 18	Rodentia: murid (striped field mouse)
<i>E. polita</i>	26 x 18	Artiodactyla: suid (pig)
<i>E. poljanskii</i>	33 x 32	Rodentia: murid (Vinogradov's jird)
<i>E. ponderosa</i>	42 x 29	Artiodactyla: cervid (European roe deer)
<i>E. popovi</i>	23 x 19	Rodentia: murid (Mongolian five-toed jerboa)
<i>E. porci</i>	22 x 16	Artiodactyla: suid (pig)
<i>E. poti</i>	30 x 18	Carnivora: procyonid (kinkajou)
<i>E. potoroi</i>	26 x 19	Diprotodontia: potoroid (long-nosed potoroo)
<i>E. poudrei</i>	26 x 18	Lagomorpha: leporid (desert cottontail)
<i>E. pragensis</i>	25 x 20	Rodentia: murid (house mouse)
<i>E. praomysis</i>	21 x 19	Rodentia: murid (Tullberg's soft-furred mouse)
<i>E. prasadi</i>	26 x 20	Rodentia: murid (wood mouse, yellow-necked mouse)
<i>E. pretoriensis</i>	24 x 19	Rodentia: murid (four-striped grass mouse)
<i>E. primbelica</i>	27 x 23	Rodentia: cricetid (common vole)
<i>E. princepsis</i>	22 x 17	Lagomorpha: ochotonid (American pika)
<i>E. prionotemni</i>	37 x 22	Diprotodontia: macropodid (tammar wallaby, whiptail wallaby, red-necked wallaby, agile wallaby, black-striped wallaby)
<i>E. procyonis</i>	23 x 18	Carnivora: procyonid (raccoon)
<i>E. proechimy</i>	23 x 17	Rodentia: echimyid (Guyenne spiny rat)
<i>E. pseudospermophili</i>	29 x 25	Rodentia: sciurid (Townsend's ground squirrel, black-tailed prairie dog)
<i>E. ptilocerci</i>	23 x 20	Scandentia: ptilocercid (pen-tailed treeshrew)
<i>E. pumilioi</i>	18 x 12	Rodentia: murid (four-striped grass mouse)
<i>E. punctata</i>	26 x 20	Artiodactyla: bovid (sheep, goat)
<i>E. punjabensis</i>	23 x 22	Lagomorpha: leporid (Indian hare)
<i>E. punoensis</i>	20 x 16	Artiodactyla: camelid (alpaca)
<i>E. putevelata</i>	27 x 20	Rodentia: murid (typical striped grass mouse)
<i>E. pyramidi</i>	20 x 17	Rodentia: murid (greater Egyptian gerbil)
<i>E. quenda</i>	25 x 24	Peramelemorphia: peramelid (southern brown bandicoot)
<i>E. quiyarum</i>		Rodentia: echimyid (coypu)
<i>E. quokka</i>	18 x 11	Diprotodontia: macropodid (quokka)
<i>E. rachmatullinae</i>	28 x 20	Artiodactyla: bovid (argali)
<i>E. rajasthani</i>	36 x 25	Artiodactyla: camelid (dromedary)
<i>E. ramgai</i>	20 x 17	Artiodactyla: tragulid (Sri Lankan spotted chevrotain)
<i>E. ratti</i>	23 x 15	Rodentia: murid (black rat)
<i>E. rayii</i> (<i>species inquirenda</i>)	27 x 20	Carnivora: canid (dog)
<i>E. razgovica</i>	21 x 17	Rodentia: murid (golden hamster)
<i>E. redukeri</i>	20 x 18	Chiroptera: vespertilionid (Java pipistrelle)
<i>E. reedi</i>	23 x 21	Rodentia: heteromyid (long-tailed pocket mouse)
<i>E. residua</i>	26 x 22	Rodentia: cricetid (dusky-footed woodrat)
<i>E. residualis</i>	32 x 20	Artiodactyla: suid (pig)
<i>E. rhabdomyis</i>	13 x 12	Rodentia: murid (four-striped grass mouse)
<i>E. rheemi</i>	25 x 21	Artiodactyla: bovid (Arabian sand gazelle)

<i>E. rhynchonycteridis</i>	26	Chiroptera: emballonurid (proboscis bat)
<i>E. riedmulleri</i>	20 x 17	Artiodactyla: bovid (chamois)
<i>E. ringaroomaensis</i>	28 x 18	Diprotodontia: macropodid (Tasmanian pademelon)
<i>E. rioarribaensis</i>	25 x 20	Chiroptera: vespertilionid (western small-footed myotis)
<i>E. robertsoni</i>	42 x 26	Lagomorpha: leporid (Arctic hare, white-tailed jackrabbit, European hare, snowshoe hare, Indian hare)
<i>E. robusta</i>	37 x 27	Artiodactyla: cervid (red deer)
<i>E. rochesterensis</i>		Lagomorpha: leporid (snowshoe hare)
<i>E. romaniae</i>	32 x 25	Artiodactyla: suid (pig)
<i>E. roperi</i>		Rodentia: cricetid (hispid cotton rat)
<i>E. ropotamae</i>	24 x 21	Eulipotyphla: soricid (bicoloured white-toothed shrew)
<i>E. rotunda</i>	15 x 12	Artiodactyla: cervid (European roe deer)
<i>E. roudabushi</i>	22 x 19	Rodentia: cricetid (white-footed mouse)
<i>E. rowani</i>		Lagomorpha: leporid (snowshoe hare)
<i>E. ruficaudati</i>	32 x 14	Lagomorpha: leporid (Indian hare, snowshoe hare)
<i>E. rufusi (rufi)</i>	25	Diprotodontia: macropodid (red kangaroo)
<i>E. rugosa</i>	24 x 16	Rodentia: murid (yellow-necked mouse)
<i>E. rupicaprae</i>	21 x 17	Artiodactyla: bovid (chamois)
<i>E. russiensis</i>	22	Rodentia: murid (wood mouse)
<i>E. rutilus</i>	31 x 21	Rodentia: cricetid (northern red-backed vole, grey red-backed vole)
<i>E. rysavyensis</i>		Rodentia: cricetid (bank vole)
<i>E. rysavyi</i>	25 x 20	Rodentia: cricetid (bank vole)
<i>E. sabani</i>	29 x 22	Rodentia: murid (long-tailed giant rat, Whitehead's spiny rat)
<i>E. sablii</i>	13 x 11	Carnivora: mustelid (sable)
<i>E. sadaraktica</i>	23 x 19	Rodentia: murid (Vinogradov's jird)
<i>E. saiga</i>	31 x 30	Artiodactyla: bovid (saiga antelope)
<i>E. sajanica</i>	21 x 18	Artiodactyla: bovid (saiga antelope)
<i>E. salasuzica</i>	24 x 21	Rodentia: murid (Persian jird, Mongolian jird, midday jird)
<i>E. sardari</i>	29 x 14	Artiodactyla: cervid (Indian muntjac)
<i>E. saudiensis</i>	31 x 25	Artiodactyla: bovid (Arabian oryx)
<i>E. saxei</i>	13 x 10	Rodentia: cricetid (meadow vole, California vole, Mexican vole, creeping vole, long-tailed vole, singing vole, tundra vole)
<i>E. scabra</i>	32 x 22	Artiodactyla: suid (pig)
<i>E. scalopi</i>	14 x 13	Eulipotyphla: talpid (eastern mole)
<i>E. scapani</i>	19 x 16	Eulipotyphla: talpid (broad-footed mole, Temminck's mole)
<i>E. schachtachtiana</i>	24 x 20	Rodentia: murid (Tristram's jird, Mongolian jird)
<i>E. schamchorica</i>	24 x 21	Rodentia: murid (Libyan jird)
<i>E. schelkovnikovi</i>	20 x 17	Rodentia: cricetid (Schelkovnikov's pine vole)
<i>E. schiwicki</i>		Rodentia: cricetid (northern red-backed vole)
<i>E. schoenbuchi</i>	59	Artiodactyla: cervid (red deer)
<i>E. scholtzsecki</i>	25 x 20	Rodentia: heteromyid (agile kangaroo rat, San Quintin kangaroo rat, Panamint kangaroo rat, banner-tailed kangaroo rat)
<i>E. schoutedeni</i>	15 x 12	Rodentia: murid (giant rat)
<i>E. schueffneri</i>	21 x 15	Rodentia: murid (house mouse)
<i>E. sciurorum</i>	24 x 15	Rodentia: sciurid (red squirrel, red-bellied squirrel, southern flying squirrel, grey squirrel, fox squirrel)
<i>E. scrofae</i>	24 x 15	Artiodactyla: suid (pig)
<i>E. sculpta</i>	37 x 29	Lagomorpha: leporid (Arctic hare, white-tailed jackrabbit)
<i>E. seideli</i>	46 x 40	Rodentia: echimyid (coypu)
<i>E. sejnijevi</i>		Artiodactyla: bovid (argali)
<i>E. semisculpta</i>	38 x 25	Lagomorpha: leporid (European hare, white-tailed jackrabbit)
<i>E. semispinosi</i>	19 x 14	Eulipotyphla: tenrecid (lowland streaked tenrec)
<i>E. separata</i>	16 x 14	Rodentia: murid (black rat, brown rat, dark-tailed tree rat, Defau rat, chestnut white-bellied rat, Hawaiian rat, Muller's giant Sunda rat, Malayan field rat)
<i>E. septentrionalis</i>	24 x 21	Lagomorpha: leporid (mountain hare, white-tailed jackrabbit)
<i>E. serbica</i>	28 x 18	Rodentia: sciurid (red squirrel)
<i>E. setonicis</i>	30 x 18	Diprotodontia: macropodid (quokka)
<i>E. setosi</i>	25 x 22	Eulipotyphla: tenrecid (greater hedgehog tenrec)
<i>E. sevilletensis</i>	17 x 16	Rodentia: cricetid (Mearn's grasshopper mouse, northern grasshopper mouse, scorpion mouse)

<i>E. sharmani</i>	28 x 17	Diprotodontia: macropodid (allied rock wallaby, Godman's rock wallaby, unadorned rock wallaby, black-flanked rock wallaby, brush-tailed rock wallaby, Proserpine rock wallaby, Rothschild's rock wallaby)
<i>E. shubini</i>	22	Lagomorpha: ochotonid (Pallas's pika, American pika)
<i>E. sibirica</i>	25 x 19	Carnivora: mustelid (sable)
<i>E. sicistae</i>		Rodentia: dipodid (Tien Shan birch mouse)
<i>E. sigmodontis</i>		Rodentia: cricetid (hispid cotton rat)
<i>E. sikapusii</i>	21 x 17	Rodentia: murid (rusty-bellied brush-furred rat)
<i>E. silvana</i>	17 x 14	Rodentia: sciurid (red squirrel)
<i>E. siniffi</i>	28 x 18	Rodentia: cricetid (North American deer mouse)
<i>E. skrjabini</i>	<i>sp. inquir.</i>	Artiodactyla: bovid (goat)
<i>E. solipedum</i>	22 x 10	Perissodactyla: equid (horse, ass)
<i>E. sordida</i>	32 x 23	Artiodactyla: cervid (red deer)
<i>E. soricinae</i> (<i>species inquirenda</i>)	50 x 30	Eulipotyphla: soricid (common shrew)
<i>E. soricis</i>	20 x 14	Eulipotyphla: soricid (common shrew, Eurasian pygmy shrew, ornate shrew)
<i>E. spalacensis</i>	9 x 7	Rodentia: spalacid (Middle East blind mole-rat)
<i>E. spalacis</i>	19 x 12	Rodentia: spalacid (Middle East blind mole-rat)
<i>E. spearei</i>	17 x 16	Diprotodontia: potoroid (musky rat-kangaroo)
<i>E. spermophili</i>	25 x 21	Rodentia: sciurid (Gunnison's prairie dog, white-tailed prairie dog, black-tailed prairie dog, yellow-bellied marmot, Wyoming ground squirrel, Franklin's ground squirrel, Richardson's ground squirrel)
<i>E. spinosa</i>	21 x 15	Artiodactyla: suid (pig)
<i>E. spratti</i>	21 x 19	Diprotodontia: potoroid (musky rat-kangaroo)
<i>E. sprehni</i>	18 x 12	Rodentia: castorid (North American beaver, Eurasian beaver)
<i>E. stefanskii</i>	64 x 36	Lagomorpha: leporid (European hare)
<i>E. stiedai</i> (syn. <i>E. cuniculi</i> , <i>E. oviformis</i>)	37 x 21	Lagomorpha: leporid (rabbit, European hare, snowshoe hare, black-tailed jackrabbit, mountain hare, blue hare, eastern cottontail, mountain cottontail, plus experimental infections in desert cottontail)
<i>E. stiedae</i> (<i>species inquirenda</i>)	12 x 7	Carnivora: canid (dog)
<i>E. strakonicensis</i>	28 x 25	Rodentia: cricetid (common vole)
<i>E. strangfordensis</i>		Rodentia: cricetid (eastern woodrat)
<i>E. subsimi</i>	25 x 19	Rodentia: cricetid (Mexican vole)
<i>E. subspherica</i>	11 x 10	Artiodactyla: bovid (cattle, zebu, water buffalo)
<i>E. suis</i>	18 x 14	Artiodactyla: suid (pig)
<i>E. sultanovi</i>		Rodentia: murid (great gerbil)
<i>E. sumgaitica</i>	22 x 19	Rodentia: murid (Libyan jird)
<i>E. suncus</i>	20 x 16	Eulipotyphla: soricid (Asian house shrew)
<i>E. sundarbanensis</i>	28 x 21	Artiodactyla: bovid (goat)
<i>E. sundermannae</i>		Artiodactyla: cervid (white-tailed deer)
<i>E. superba</i>	50 x 31	Artiodactyla: cervid (roe deer)
<i>E. suppereri</i>	45 x 34	Artiodactyla: bovid (chamois)
<i>E. surifer</i>	35 x 25	Rodentia: murid (red spiny rat)
<i>E. surki</i>	22 x 14	Rodentia: sciurid (grey marmot, bobak marmot)
<i>E. surkovae</i>	25 x 22	Artiodactyla: bovid (argali)
<i>E. susliki</i>	32 x 25	Rodentia: sciurid (yellow ground squirrel)
<i>E. svanbaevi</i>	25 x 21	Rodentia: murid (wood mouse)
<i>E. sylvatica</i>	19 x 14	Rodentia: murid (wood mouse)
<i>E. sylvilagi</i>	29 x 18	Lagomorpha: leporid (Brazilian cottontail, eastern cottontail)
<i>E. synaptomys</i>	27 x 22	Rodentia: cricetid (southern bog lemming, northern bog lemming)
<i>E. tachyglossi</i>		Monotremata: tachyglossid (short-beaked echidna)
<i>E. tachyoryctis</i>	23 x 17	Rodentia: spalacid (Rwanda African mole-rat)
<i>E. tadarida</i>	25 x 19	Chiroptera: molossid (pocketed free-tailed bat)
<i>E. tadshikistanica</i>	22	Rodentia: cricetid (Transcaucasian mole vole)
<i>E. tadjikistanica</i>		Carnivora: felid (Eurasian lynx)
<i>E. taimyrica</i>		Rodentia: cricetid (Middendorf's vole)
<i>E. talboti</i>	36 x 25	Artiodactyla: bovid (Coke's hartebeest)
<i>E. talikiensis</i>		Rodentia: spalacid (lesser mole-rat)

<i>E. talischaensis</i>	21	Rodentia: cricetid (European water vole)
<i>E. talpini</i>	24	Rodentia: cricetid (northern mole vole)
<i>E. talpoidei</i>	21 x 13	Eulipotyphla: talpid (Japanese shrew mole)
<i>E. tamanduae</i>	25 x 22	pilosa: myrmecophagid (southern tamandua)
<i>E. tamariscini</i>	19 x 18	Rodentia: murid (tamarisk jird)
<i>E. tamiasciuri</i>	33 x 19	Rodentia: sciurid (red squirrel, Abert's squirrel, American red squirrel, Mearn's squirrel, cliff chipmunk, Merriam's chipmunk, California chipmunk), cricetid (montane vole)
<i>E. tamiensis</i>		Rodentia: sciurid (eastern chipmunk)
<i>E. tanabei</i>	12 x 7	Eulipotyphla: talpid (large Asian mole)
<i>E. tarandina</i>	20 x 18	Artiodactyla: cervid (reindeer)
<i>E. tarsii</i>	17 x 12	Primates: tarsiid (Philippine tarsier)
<i>E. tasakendica</i>	23 x 21	Rodentia: murid (Vinogradov's jird)
<i>E. tasmaniae</i>	83	Diprotodontia: vombatid (southern hairy-nosed wombat)
<i>E. tatarica</i>	30 x 24	Artiodactyla: bovid (saiga antelope)
<i>E. taterae</i>		Rodentia: murid (Indian gerbil)
<i>E. tatusi</i>	32	Xenarthra: dasypodid (nine-banded armadillo, southern naked-tailed armadillo, big hairy armadillo)
<i>E. taylori</i>	20 x 15	Rodentia: cricetid (northern pygmy mouse)
<i>E. tekenovi</i>	29 x 22	Artiodactyla: bovid (saiga antelope)
<i>E. telekii</i>	20 x 16	Rodentia: murid (typical striped grass mouse)
<i>E. tenggilingi</i>		Pholidota: manid (Sunda pangolin)
<i>E. terrestris</i>	21 x 16	Rodentia: cricetid (European water vole)
<i>E. theileri</i>	20 x 17	Rodentia: murid (Natal multimammate mouse)
<i>E. thianethi</i>	43 x 29	Artiodactyla: bovid (water buffalo, cattle, zebu)
<i>E. thomomysis</i>	14	Rodentia: geomyid (Botta's pocket gopher)
<i>E. thylogale</i>	32 x 21	Diprotodontia: macropodid (Tasmanian pademelon)
<i>E. tianschanica</i>		Rodentia: dipodid (Tien Shan birch mouse)
<i>E. tikusi</i>	30 x 24	Rodentia: murid (Edward's swamp rat)
<i>E. tinaroonensis</i>	26 x 24	Diprotodontia: potoroid (musky rat-kangaroo)
<i>E. tirupatiensis</i>	40 x 28	Artiodactyla: bovid (goat)
<i>E. titthus</i>	16 x 14	Eulipotyphla: talpid (hairy-tailed mole)
<i>E. toddi</i>	40 x 32	Rodentia: sciurid (American red squirrel)
<i>E. toganmainensis</i>	39 x 25	Diprotodontia: macropodid (red kangaroo, eastern grey kangaroo, western grey kangaroo, red-necked wallaby, tammar wallaby)
<i>E. toluCADensis</i>	25 x 20	Rodentia: cricetid (Mexican vole)
<i>E. tomopea</i>	31 x 25	Chiroptera: vespertilionid (blunt-eared bat)
<i>E. torosicum</i>		Rodentia: spalacid (Middle East blind mole-rat)
<i>E. townsendi</i>	40 x 28	Lagomorpha: leporid (European hare, mountain hare, white-tailed jackrabbit)
<i>E. tragocamelis</i>	24 x 19	Artiodactyla: bovid (nilgai)
<i>E. traguli</i>		Artiodactyla: tragulid (Java mouse-deer)
<i>E. travassosi</i>	51 x 40	Cingulata: dasypodid (southern long-nosed armadillo), chlamyphorid (six-banded armadillo)
<i>E. trichechi</i>		Sirenia: trichechid (Amazonian manatee)
<i>E. trichosuri</i>	41 x 23	Diprotodontia: phalangerid (mountain brushtail possum, common brushtail possum, short-eared possum)
<i>E. truffittae</i>	21 x 18	Artiodactyla: bovid (common eland)
<i>E. tristrami</i>	26 x 22	Rodentia: murid (Tristram's jird)
<i>E. tschernobyli</i>	13 x 11	Rodentia: murid (striped field mouse)
<i>E. tsogoi</i>	25 x 20	Rodentia: murid (midday jird)
<i>E. tuberculata</i>		Rodentia: murid (black rat)
<i>E. tunisiensis</i>		Artiodactyla: bovid (goat)
<i>E. tupaiae</i>	20 x 19	Scandentia: tupaiid (common treeshrew, lesser treeshrew, large treeshrew)
<i>E. turkestanica</i>	26 x 19	Rodentia: murid (Turkestan rat)
<i>E. turkmenica</i>		Rodentia: spalacid (lesser mole-rat)
<i>E. turnbulli</i>	32 x 23	Artiodactyla: bovid (bay duiker)
<i>E. tuskegensis</i>		Rodentia: cricetid (hispid cotton rat)
<i>E. tuzdili</i>		Rodentia: spalacid (lesser mole-rat)
<i>E. tyanchanensis</i>	24 x 19	Rodentia: sciurid (Menzbier's marmot)

<i>E. uilenbergi</i> (<i>species inquirenda</i>)	17 x 16	Eulipotyphla: tenrecid (tailless tenrec)
<i>E. uniungulata</i>	20 x 15	Perissodactyla: equid (horse, ass)
<i>E. uptoni</i>		Rodentia: murid (wood mouse, small Japanese field mouse, large Japanese field mouse, Korean field mouse)
<i>E. urfensis</i>		Rodentia: spalacid (Middle East blind mole-rat)
<i>E. ursi</i>	14 x 12	Carnivora: ursid (brown bear)
<i>E. ursini</i>	24 x 20	Diprotodontia: vombatid (southern hairy-nosed wombat)
<i>E. utahensis</i>	42 x 40	Rodentia: heteromyid (agile kangaroo rat, San Quintin kangaroo rat, Merriam's kangaroo rat, chisel-toothed kangaroo rat)
<i>E. utinensis</i> [probably <i>Klossiella equi</i>]	nr	Perissodactyla: equid (horse)
<i>E. uzbekistanica</i>		Rodentia: murid (midday jird)
<i>E. vagrantis</i>	27 x 22	Eulipotyphla: soricid (smoky shrew, montane shrew, Trowbridge shrew)
<i>E. vahidovi</i>	22 x 17	Rodentia: murid (Vinogradov's jird)
<i>E. vej dovsyi</i>		Lagomorpha: leporid (rabbit)
<i>E. vejsovi</i>	21 x 18	Chiroptera: vespertilionid (common noctule)
<i>E. vermiformis</i>	23 x 18	Rodentia: murid (house mouse)
<i>E. vespertilii</i>	25 x 22	Chiroptera: vespertilionid (part-coloured bat)
<i>E. vilasi</i> (syn. <i>E. adaensis</i> , <i>E. dorsalis</i>)	18 x 14	Rodentia: sciurid (white-tailed prairie dog, black-tailed prairie dog, groundhog, Mexican ground squirrel, Townsend's ground squirrel, gray-footed chipmunk, cliff chipmunk, Merriam's chipmunk, California chipmunk, eastern chipmunk, Townsend's chipmunk)
<i>E. vinckei</i>	22 x 13	Rodentia: murid (tree rat)
<i>E. vinogradovi</i>	22 x 19	Rodentia: murid (Vinogradov's jird)
<i>E. virginianus</i>	49 x 33	Artiodactyla: cervid (white-tailed deer)
<i>E. viridis</i> (<i>species inquirenda</i>)	20 x 14	Chiroptera: molossid (greater horseshoe bat)
<i>E. vison</i>	20 x 15	Carnivora: mustelid (European polecat, American mink)
<i>E. visonlevinei</i>	23 x 15	Carnivora: mustelid (American mink)
<i>E. voinjamensis</i>	20 x 18	Primates: galagid (Prince Demidoff's bushbaby)
<i>E. volckertzooni</i>	22 x 13	Diprotodontia: macropodid (quokka)
<i>E. volgensis</i>	27 x 22	Rodentia: sciurid (red-cheeked ground squirrel, little ground squirrel, relict ground squirrel, long-tailed ground squirrel)
<i>E. voronezhensis</i>	23 x 21	Carnivora: mustelid (striped skunk)
<i>E. vulpis</i> (<i>species inquirenda</i>)	17 x 14	Carnivora: canid (Bengal fox, red fox)
<i>E. wallabiae</i>	33 x 20	Diprotodontia: macropodid (swamp wallaby)
<i>E. walleri</i>	29 x 24	Artiodactyla: bovid (giraffe gazelle)
<i>E. wapiti</i>	38 x 26	Artiodactyla: cervid (red deer)
<i>E. wassilewskyi</i>	18 x 14	Artiodactyla: cervid (chital, red deer, sika)
<i>E. webbae</i>		Rodentia: cricetid (hispid cotton rat)
<i>E. weddelli</i>	48 x 30	Pinnipedia: phocid (Weddell seal)
<i>E. weissii</i>	24 x 19	Rodentia: cricetid (friendly leaf-eared mouse)
<i>E. wenrichi</i>	19 x 14	Rodentia: cricetid (meadow vole, beach vole, Mexican vole, montane vole, creeping vole, tundra vole, long-tailed vole, singing vole, taiga vole)
<i>E. weybridgensis</i>	24 x 17	Artiodactyla: bovid (sheep)
<i>E. whitakeri</i>	17 x 16	Eulipotyphla: soricid (North American least shrew)
<i>E. wilcanniensis</i>	32 x 20	Diprotodontia: macropodid (red kangaroo, eastern grey kangaroo, western grey kangaroo, common wallaroo, red-necked wallaby)
<i>E. williamsi</i>	18 x 14	Rodentia: dipodid (Euphrates jerboa)
<i>E. wombati</i>	75 x 57	Diprotodontia: vombatid (southern hairy-nosed wombat)
<i>E. worleyi</i>	14 x 13	Lagomorpha: ochotonid (American pika)
<i>E. wyomingensis</i>	40 x 28	Artiodactyla: bovid (cattle, zebu, water buffalo)
<i>E. xanthopus</i>	25 x 17	Diprotodontia: macropodid (yellow-footed rock wallaby)
<i>E. xeri</i>	21 x 17	Rodentia: sciurid (striped ground squirrel)
<i>E. yakimoffmatschoulskyi</i>	28 x 21	Artiodactyla: bovid (chamois)
<i>E. yakimovi</i>	37 x 24	Artiodactyla: bovid (nilgai)
<i>E. yathongensis</i>	21 x 14	Diprotodontia: macropodid (western grey kangaroo, eastern grey

		kangaroo)
<i>E. yukonensis</i>	25 x 13	Rodentia: sciurid (long-tailed ground squirrel)
<i>E. yunnanensis</i>		Artiodactyla: bovid (cattle)
<i>E. zajacae</i>		Artiodactyla: cervid (white-tailed deer)
<i>E. zakirica</i>	25 x 23	Chiroptera: vespertilionid (parti-coloured bat)
<i>E. zapi</i>		Rodentia: dipodid (meadow jumping mouse, western jumping mouse, Pacific jumping mouse)
<i>E. zaurica</i>	23 x 21	Rodentia: murid (wood mouse)
<i>E. zejniji</i>	46 x 38	Artiodactyla: bovid (argali)
<i>E. zemphirica</i>	25 x 21	Rodentia: murid (Persian jird)
<i>E. zuernii</i>	18 x 16	Artiodactyla; bovid (cattle, zebu, water buffalo, wisent)
<i>E. zulfiaensis</i>	25 x 20	Rodentia: murid (Vinogradov's jird)
<i>E. zuvandica</i>	22 x 17	Rodentia: cricetid (common vole)
<i>E. zygodontomyis</i>		Rodentia: cricetid (spotted bolo mouse)
Birds		
<i>E. abramovi</i>	22 x 17	Anseriformes: anatid (mallard duck)
<i>E. accipitrus</i>	13	Accipitriformes: accipitrid (Eurasian sparrowhawk)
<i>E. acervulina</i>	20 x 14	Galliformes: phasianid (chicken, guinea fowl, Sri Lanka jungle fowl), odontophorid (California quail, northern bobwhite quail, plumed quail)
<i>E. adenoeides</i>	26 x 16	Galliformes: phasianid (turkey)
<i>E. aestivae</i>	37 x 24	Psittaciformes: psittacid (turquoise-fronted amazon)
<i>E. ahmadi</i>		Charadriiformes: charadriid (white-tailed lapwing)
<i>E. alakuli</i>		Gruiformes: rallid (Eurasian coot)
<i>E. alectorae</i>	24 x 15	Galliformes: phasianid (rock partridge)
<i>E. anatis</i>	17 x 14	Anseriformes: anatid (mallard duck)
<i>E. angusta</i>	30 x 17	Galliformes: phasianid (hazel grouse, spruce grouse, ruffed grouse, greater sage-grouse, sharp-tailed grouse)
<i>E. anili</i>		Passeriformes: sturnid (pied myna)
<i>E. anseris</i> (syn. <i>E. parvula</i>)	22 x 17	Anseriformes: anatid (goose, snow goose, Canada goose)
<i>E. anthi</i>	26 x 22	Passeriformes: motacillid (meadow pipit)
<i>E. arabica</i>		Galliformes: phasianid (peacock)
<i>E. aratinga</i>		Psittaciformes: psittacid (orange-fronted parakeet)
<i>E. ardeae</i>		Ciconiiformes: ardeid (grey heron, purple heron)
<i>E. asturi</i>	10 x 6	Accipitriformes: accipitrid (northern goshawk)
<i>E. atheni</i>		Strigiformes: strigid (spotted owl)
<i>E. aythya</i>	20 x 16	Anseriformes: anatid (lesser scaup)
<i>E. azura</i>		Galliformes: phasianid (Japanese quail)
<i>E. balozeti</i>	25 x 21	Passeriformes: sturnid (common starling)
<i>E. baltica</i>		Gruiformes: gruid (common crane)
<i>E. barbata</i>	23 x 10	Piciformes: capitonid (blue-throated barbet)
<i>E. bateri</i>	23 x 18	Galliformes: phasianid (common quail, gray quail)
<i>E. battakhi</i>	21 x 18	Anseriformes: anatid (mallard duck)
<i>E. bazi</i>	24 x 17	Pelecaniformes: threskiornithid (red-naped ibis)
<i>E. bemricki</i>		Strigiformes: strigid (great grey owl)
<i>E. bhutanensis</i>	16	Galliformes: phasianid (peacock-pheasant)
<i>E. bonasae</i>	21	Galliformes: phasianid (hazel grouse, ruffed grouse, willow ptarmigan, spruce grouse, sharp-tailed grouse)
<i>E. boschadis</i>	24 x 13	Anseriformes: anatid (mallard duck)
<i>E. bosquei</i>		Gruiformes: gruid (sandhill crane)
<i>E. bragini</i>		Gruiformes: rallid (Eurasian coot)
<i>E. brantae</i>	23 x 18	Anseriformes: anatid (Canada goose, Hutchin's goose)
<i>E. brinkmanni</i>	29 x 19	Galliformes: phasianid (Canadian rock ptarmigan)
<i>E. brunetti</i>	27 x 22	Galliformes: phasianid (chicken)
<i>E. bubonis</i>		Strigiformes: strigid (great horned owl)
<i>E. bucephalae</i>	30 x 16	Anseriformes: anatid (common goldeneye)
<i>E. burhinici</i>		Charadriiformes: burhinid (Eurasian stone-curlew)
<i>E. caucasica</i>	33 x 19	Galliformes: phasianid (Chukar partridge, red-legged partridge)
<i>E. centroceri</i>	23 x 17	Galliformes: phasianid (greater sage-grouse)
<i>E. certhiidarum</i>		Passeriformes: certhiid (short-toed treecreeper)
<i>E. charadrii</i>	16 x 12	Charadriiformes: charadriid (Caspian plover)

<i>E. choudari</i>		Columbiformes: columbid (Eurasian collared dove)
<i>E. christianseni</i>	17 x 11	Anseriformes: anatid (mute swan)
<i>E. clarkei</i>	27 x 19	Anseriformes: anatid (snow goose, Canada goose)
<i>E. colchici</i>	27 x 17	Galliformes: phasianid (common pheasant)
<i>E. colini</i>		Galliformes: odontophorid (northern bobwhite quail)
<i>E. columbae</i>	16 x 14	Columbiformes: columbid (rock dove)
<i>E. columbarum</i>	20 x 19	Columbiformes: columbid (rock dove)
<i>E. coracias</i>		Coraciiformes: coraciid (European roller)
<i>E. coturnicis</i>		Galliformes: phasianid (rock partridge)
<i>E. coturnicis</i>	33 x 23	Galliformes: phasianid (common quail)
<i>E. crassa</i>	26 x 21	Anseriformes: anatid (Canada goose)
<i>E. creutzii</i>	13 x 12	Charadriiformes: larid (black-headed gull)
<i>E. crustii</i>		Galliformes: phasianid (mountain quail)
<i>E. crypturelli</i>		Tinamiformes: tinamid (little tinamou)
<i>E. curvata</i>		Columbiformes: columbid (ruddy ground dove, scaled dove)
<i>E. danailovi</i>	19 x 12	Anseriformes: anatid (mallard duck, plus experimental infection in greylag goose)
<i>E. dauki</i>	18 x 12	Gruiformes: rallid (white-breasted waterhen)
<i>E. dendrocopi</i>	29 x 17	Piciformes: picid (great spotted woodpecker)
<i>E. depuytoraci</i>		Passeriformes: sylviid (garden warbler)
<i>E. dispersa</i>	23 x 19	Galliformes: phasianid (turkey, Gould's turkey, common European quail, common pheasant, chicken, ruffed grouse, sharp-tailed grouse), odontophorid (bobwhite quail)
<i>E. dissanaikiei</i>	21 x 14	Galliformes: phasianid (Ceylon junglefowl)
<i>E. dubeyi</i>	31 x 22	Galliformes: phasianid (red junglefowl)
<i>E. duculai</i>		Columbiformes: columbid (Torresian imperial pigeon)
<i>E. duncani</i>		Coraciiformes: alcedinid (sacred kingfisher)
<i>E. dunsingi</i>	35 x 25	Psittaciformes: psittacid (budgerigar)
<i>E. duodenalis</i>	21 x 19	Galliformes: phasianid (common pheasant)
<i>E. fanthami</i>	28 x 19	Galliformes: phasianid (Canadian rock ptarmigan)
<i>E. farrae</i>	23 x 18	Anseriformes: anatid (greater white-fronted goose)
<i>E. forresteri</i>		Piciformes: ramphastid (Toco toucan)
<i>E. francolini</i>		Galliformes: phasianid (black francolin)
<i>E. fraterculae</i>		Charadriiformes: alcid (Atlantic puffin)
<i>E. fulica</i>	16 x 13	Gruiformes: rallid (water rail, spotted crane)
<i>E. fulva</i>	30 x 22	Anseriformes: anatid (greylag goose, snow goose, Canada goose)
<i>E. galateai</i>		Coraciiformes: alcedinid (common paradise kingfisher)
<i>E. gallinagoi</i>	21 x 14	Charadriiformes: scolopacid (common snipe)
<i>E. gallopavonis</i>	27 x 17	Galliformes: phasianid (turkey)
<i>E. garzettae</i>		Ciconiiformes: ardeid (little egret)
<i>E. gaviae</i>		Gaviiformes: gaviid (common loon)
<i>E. gennaeuscus</i>	21 x 18	Galliformes: phasianid (kalij pheasant)
<i>E. globulosa</i>		Gruiformes: gruid (common crane)
<i>E. goelandi</i>		Charadriiformes: larid (European herring gull)
<i>E. gonzalezcastroi</i>		Galliformes: phasianid (red-legged partridge)
<i>E. gorakhpuri</i>	20 x 14	Galliformes: phasianid (helmeted guineafowl)
<i>E. gouriae</i>		Columbiformes: columbid (Victoria crowned pigeon)
<i>E. grallinida</i>		Passeriformes: monarchid (magpie-lark)
<i>E. grenieri</i>	24 x 16	Galliformes: phasianid (helmeted guinea fowl)
<i>E. gruis</i> (syn. <i>E. kazanskii</i>)	19 x 12	Gruiformes: gruid (Demoiselle crane)
<i>E. grusi</i>	22 x 17	Gruiformes: gruid (sarus crane)
<i>E. haematodi</i>		Psittaciformes: lorid (coconut lorikeet)
<i>E. hagani</i>	19 x 18	Galliformes: phasianid (red junglefowl)
<i>E. hermani</i>	26 x 19	Anseriformes: anatid (greylag goose, snow goose, Canada goose, cackling goose)
<i>E. hydrobatidis</i>	19 x 18	Procellariiformes: hydrobatid (European storm petrel)
<i>E. indentata</i>	30 x 21	Galliformes: phasianid (Ceylon junglefowl)
<i>E. innocua</i>	22 x 21	Galliformes: phasianid (turkey)
<i>E. johnsoni</i> [species inquirenda]	22 x 18	Galliformes: phasianid (chicken)

<i>E. kapotei</i>	26 x 24	Columbiformes: columbid (rock dove)
<i>E. karatauica</i>		Galliformes: phasianid (chukar partridge)
<i>E. kofoidi</i>	20 x 18	Galliformes: phasianid (rock partridge, red-legged partridge, gray partridge, chukar)
<i>E. koganae</i>	22 x 16	Anseriformes: anatid (northern pintail, teal, mallard, garganey, gadwall, pochard)
<i>E. kotlani</i>	31 x 24	Anseriformes: anatid (greylag goose)
<i>E. kustanaica</i> (syn. <i>E. krylovi</i>)	18 x 15	Anseriformes: anatid (northern shoveler, Eurasian teal, Eurasian wigeon, garganey, gadwall, pochard)
<i>E. labbeana</i>	18 x 15	Columbiformes: columbid (rock dove, domestic pigeon, stock dove, common wood pigeon, Oriental turtle dove, Eurasian collared dove, common ground dove)
<i>E. lafayettei</i>	20 x 14	Galliformes: phasianid (Ceylon junglefowl)
<i>E. lagopodi</i>	24 x 15	Galliformes: phasianid (alpine rock ptarmigan)
<i>E. langeroni</i>	33 x 18	Galliformes: phasianid (common pheasant, white-winged pheasant)
<i>E. lari</i>	24 x 17	Charadriiformes: larid (European herring gull, black-headed gull)
<i>E. legionensis</i>	21 x 15	Galliformes: phasianid (red-legged partridge, rock partridge)
<i>E. leninogorica</i>		Galliformes: phasianid (hazel grouse)
<i>E. lettyae</i>		Galliformes: odontophorid (northern bobwhite quail)
<i>E. leucuri</i>		Galliformes: phasianid (white-tailed ptarmigan)
<i>E. longa</i>		Gruiformes: gruid (common crane)
<i>E. lophortygis</i>	23 x 19	Galliformes: odontophorid (California quail, mountain quail)
<i>E. lophurae</i>		Galliformes: phasianid (kalij pheasant)
<i>E. lucknowensis</i>	23 x 18	Passeriformes: motacillid (white wagtail)
<i>E. lyruri</i>	26 x 15	Galliformes: phasianid (western capercaillie, black grouse, grey partridge)
<i>E. magnalabia</i>	22 x 16	Anseriformes: anatid (greater white-fronted goose, domestic goose, snow goose, Canada goose, cackling goose)
<i>E. malaccaae</i>	29 x 17	Passeriformes: estrildid (tricoloured munia)
<i>E. mandali</i>	18 x 17	Galliformes: phasianid (Indian peafowl)
<i>E. maxima</i>	29 x 23	Galliformes: phasianid (chicken), odontophorid (California quail)
<i>E. mayurai</i>	23 x 14	Galliformes: phasianid (Indian peafowl, green peafowl)
<i>E. megabubonis</i>		Strigiformes: strigid (great horned owl)
<i>E. megalostomata</i>	24 x 19	Galliformes: phasianid (common pheasant)
<i>E. meleagris</i>	24 x 17	Galliformes: phasianid (turkey)
<i>E. meleagrimitis</i>	18 x 15	Galliformes: phasianid (turkey)
<i>E. mellumi</i>	17 x 13	Charadriiformes: larid (European herring gull)
<i>E. meservei</i>	18 x 17	Charadriiformes: larid (Forster's tern)
<i>E. mitis</i>	16 x 14	Galliformes: phasianid (chicken), odontophorid (California quail, mountain quail)
<i>E. mivati</i>	16 x 13	Galliformes: phasianid (chicken)
<i>E. mongolica</i>	14 x 13	Gruiformes: rallid (Eurasian coot)
<i>E. mulardi</i>		Anseriformes: anatid (mallard duck)
<i>E. musophagi</i>	23 x 19	Musophagiformes: musophagid (purple-crested turaco)
<i>E. muta</i>	25 x 17	Galliformes: phasianid (Icelandic rock ptarmigan)
<i>E. mutum</i>	25 x 22	Galliformes: cracid (bare-faced curassow)
<i>E. nadsoni</i>	25 x 21	Galliformes: phasianid (black grouse)
<i>E. necatrix</i>	17 x 14	Galliformes: phasianid (chicken)
<i>E. nocens</i>	29 x 20	Anseriformes: anatid (greylag goose, lesser white-fronted goose, snow goose)
<i>E. nonbrumpti</i>	22	Piciformes: picid (great spotted woodpecker)
<i>E. nottion</i>		Anseriformes: anatid (mallard duck)
<i>E. numenii</i>	22	Charadriiformes: scolopacid (Eurasian curlew)
<i>E. numidae</i>	19 x 15	Galliformes: phasianid (helmeted guinea fowl)
<i>E. nyctae</i>		Strigiformes: strigid (snowy owl)
<i>E. nyroca</i>	25 x 18	Anseriformes: anatid (ferruginous duck)
<i>E. okanaganensis</i>	26 x 20	Galliformes: odontophorid (California quail, mountain quail)
<i>E. oreoecetes</i>		Galliformes: phasianid (white-tailed ptarmigan, dusky grouse)
<i>E. oreortygis</i>		Galliformes: odontophorid (California quail, mountain quail)
<i>E. pacifica</i>	22 x 18	Galliformes: phasianid (common pheasant, golden pheasant, Reeve's pheasant, Tibetan eared pheasant, silver pheasant)

<i>E. padulensis</i>		Galliformes: phasianid (red-legged partridge)
<i>E. paludosa</i>	15 x 11	Gruiformes: rallid (white-breasted waterhen, American coot, Eurasian coot, common moorhen)
<i>E. palumbi</i>		Columbiformes: columbid (Galapagos dove)
<i>E. paradisaeei</i>		Passeriformes: paradisaeid (Raggiana bird-of-paradise)
<i>E. patnaiki</i>	19 x 16	Galliformes: phasianid (Indian peafowl)
<i>E. pattersoni</i>	20 x 14	Galliformes: phasianid (greater sage-grouse, black grouse)
<i>E. pavonina</i>	24 x 18	Galliformes: phasianid (Indian peafowl)
<i>E. pavonis</i>	23 x 18	Galliformes: phasianid (Indian peafowl)
<i>E. pelecani</i>		Pelecaniformes: pelecanid (brown pelican)
<i>E. phasiani</i>	23 x 16	Galliformes: phasianid (common pheasant, golden pheasant, Reeve's pheasant, white-eared pheasant, silver pheasant)
<i>E. philomachus</i>		Charadriiformes: scolopacid (wood sandpiper)
<i>E. picta (pictus)</i>	19 x 15	Galliformes: phasianid (golden pheasant, silver pheasant)
<i>E. pluvialina</i>	19 x 14	Charadriiformes: charadriid (Caspian plover)
<i>E. polycephali</i>	17 x 14	Gruiformes: rallid (western swamphen)
<i>E. porphyryulae</i>		Gruiformes: rallid (American purple gallinule)
<i>E. praecox</i>	21 x 17	Galliformes: phasianid (chicken)
<i>E. procera</i>	30 x 17	Galliformes: phasianid (grey partridge, western capercaillie)
<i>E. psittacina</i>		Psittaciformes: psittacid (budgerigar)
<i>E. pternistis</i>		Galliformes: phasianid (yellow-necked francolin)
<i>E. pulchella</i>	24 x 15	Anseriformes: anatid (Canada goose)
<i>E. pusilla</i>		Gruiformes: gruid (common crane)
<i>E. raichoi</i>	21 x 18	Galliformes: phasianid (Japanese rock ptarmigan)
<i>E. reichenowi</i>	19 x 14	Gruiformes: gruid (Demoiselle crane, sandhill crane, sarus crane, whooping crane)
<i>E. renicola</i>	25 x 24	Charadriiformes: larid (black-headed gull)
<i>E. rhynchoti</i>	25 x 22	Tinamiformes: tinamid (red-winged tinamou)
<i>E. ridjakovi</i>	27 x 18	Galliformes: phasianid (grey partridge)
<i>E. rissae</i>	19 x 14	Charadriiformes: larid (black-legged kittiwake)
<i>E. riyadhae</i>		Galliformes: phasianid (peacock)
<i>E. rjupa</i>	25 x 22	Galliformes: phasianid (Icelandic rock ptarmigan)
<i>E. roscoviensis</i>	17 x 15	Charadriiformes: charadriid (Kentish plover, little ringed plover, golden plover); scolopacid (turnstone, dunlin, common sandpiper, whimbrel, redshank); Passeriformes: motacillid (white wagtail); Pelecaniformes: phalacrocoracid (European shag)
<i>E. saitamae</i>	19 x 13	Anseriformes: anatid (mallard duck)
<i>E. saubenovae</i>		Gruiformes: rallid (Eurasian coot)
<i>E. schachdagica</i>	24 x 18	Anseriformes: anatid (mallard duck)
<i>E. schokpaki</i>		Coraciiformes: coracid (European roller)
<i>E. serventyi</i>	28 x 26	Procellariiformes: procellariid (short-tailed shearwater)
<i>E. somateriae</i>	32 x 14	Anseriformes: anatid (long-tailed duck, common eider, greater scaup)
<i>E. speotytoi</i>	33 x 25	Strigiformes: strigid (burrowing owl)
<i>E. sphenocercae</i>	19 x 13	Columbiformes: columbid (wedge-tailed green pigeon)
<i>E. sporadica</i>		Galliformes: phasianid (chicken)
<i>E. stercorariae</i>	12 x 9	Charadriiformes: stercorariid (Arctic skua)
<i>E. stigmosa</i>	23 x 17	Anseriformes: anatid (ducks)
<i>E. striata</i>		Anseriformes: anatid (greylag goose, snow goose, Canada goose)
<i>E. strigis</i>	35 x 30	Strigiformes: strigid (tawny owl)
<i>E. subrotunda</i>	22	Galliformes: phasianid (turkey)
<i>E. symmetrica</i>	35 x 29	Galliformes: phasianid (Ceylon junglefowl)
<i>E. tahamensis</i>		Galliformes: phasianid (Arabian quail)
<i>E. taldykurganica</i>		Galliformes: phasianid (common quail)
<i>E. teetari</i>	24 x 20	Galliformes: phasianid (black francolin, grey francolin)
<i>E. tenella</i> (syn. <i>E. avium</i> , <i>E. bracheti</i> , <i>E. globosa</i>)	23 x 19	Galliformes: phasianid (chicken, rock partridge, grey partridge, red grouse, common pheasant), odontophorid (bobwhite quail, California quail, mountain quail)
<i>E. tetartooimia</i>		Galliformes: phasianid (common pheasant)
<i>E. tetricis</i>	31 x 15	Galliformes: phasianid (black grouse)
<i>E. tropicalis</i>	20	Columbiformes: columbid (rock dove)
<i>E. truncata</i>	21 x 16	Anseriformes: anatid (greylag goose, Ross's goose, snow goose,

		Canada goose)
<i>E. tsunodai</i>		Galliformes (Japanese quail)
<i>E. turaco</i>	28 x 20	Musophagiformes: musophagid (purple-crested turaco)
<i>E. turturi</i>	26 x 22	Columbiformes: columbid (European turtle dove)
<i>E. tyzzeri</i>	32 x 23	Galliformes: phasianid (chicken)
<i>E. uekii</i>	24 x 15	Galliformes: phasianid (Japanese rock ptarmigan)
<i>E. urnula</i> (syn. <i>E. cernula</i>)	20 x 13	Pelecaniformes: phalacrocoracid (great cormorant)
<i>E. ustkamenogorica</i>		Galliformes: phasianid (hazel grouse)
<i>E. uzura</i>	24 x 19	Galliformes: phasianid (Japanese quail)
<i>E. vanelli</i>	29 x 14	Charadriiformes: charadriid (yellow-wattled lapwing)
<i>E. vanmurghavi</i>	16 x 12	Galliformes: phasianid (red junglefowl, grey junglefowl)
<i>E. varia</i>		Strigiformes: strigid (tawny owl)
<i>E. ventriosa</i>	32 x 21	Galliformes: phasianid (western capercaillie)
<i>E. vitellini</i>		Piciformes: ramphastid (channel-billed toucan)
<i>E. waiganiensis</i>		Columbiformes: columbid (common emerald dove, pheasant pigeon)
<i>E. wobeseri</i>		Charadriiformes: larid (European herring gull)
<i>E. yakisevi</i> (syn. <i>E. brumpti</i>)	24 x 20	Galliformes: phasianid (western capercaillie)
Reptiles		
<i>E. ablephari</i>	23 x 18	Sauria: scincid (snake-eyed skink)
<i>E. acanthodactyli</i>	31 x 21	Sauria: lacertid (Nidua fringe-fingered lizard)
<i>E. aesculapi</i>	15 x 13	Serpentes: colubrid (false coral snake)
<i>E. agamae</i>	23 x 12	Sauria: agamid (common agama)
<i>E. ahtanumensis</i>	34 x 20	Sauria: phrynosomatid (western fence lizard)
<i>E. albemarlensis</i>		Sauria: tropidurid (Galapagos lava lizard)
<i>E. alligatori</i>		Crocodylia: alligatorid (American alligator)
<i>E. amarili</i>	30 x 18	Serpentes: viperid (Neuwied's lancehead)
<i>E. amazonensis</i>	12 x 9	Testudines: testudinid (red-footed tortoise)
<i>E. ameivae</i>	22 x 20	Sauria: teiid (rainbow ameiva)
<i>E. amphisbaeniarum</i>		Sauria: amphisbaenid (Mann's worm lizard)
<i>E. amphorae</i>	25 x 22	Serpentes: colubrid (Florida crowned snake)
<i>E. amreini</i>	<i>nomen nudum</i>	Sauria: phrynosomatid (common side-blotched lizard)
<i>E. amydae</i>	20 x 15	Testudines: trionychid (northern spiny softshell turtle, pallid spiny softshell turtle)
<i>E. annea</i>		Serpentes: colubrid (smooth green snake, ribbon snake, common garter snake)
<i>E. anolidis</i>		Sauria: dactyloid (Carolina anole)
<i>E. apalone</i>	17 x 13	Testudines: trionychid (pallid spiny softshell turtle, western spiny softshell turtle)
<i>E. arabukoskokensis</i>	27 x 15	Serpentes: colubrid (tiger cat snake)
<i>E. arakanensis</i>	28 x 24	Testudines: geoemydid (Akaran forest turtle)
<i>E. arnaldoi</i>	30 x 15	Serpentes: colubrid (coastal house snake)
<i>E. arnyi</i>	17 x 15	Serpentes: colubrid (prairie ringneck snake)
<i>E. atheridis</i>	23	Serpentes: viperid (western bush viper)
<i>E. attenuata</i>	22 x 13	Serpentes: colubrid (red-sided garter snake, yellow-belly water snake, blotched water snake, broad-banded water snake, northern water snake, western ribbon snake, redstripe ribbon snake)
<i>E. avilae</i>		Sauria: dactyloid (desert grass anole)
<i>E. balrocki</i>		Sauria: scincid (Berber skink)
<i>E. barnardi</i>		Sauria: gekkonid (common Namib day gecko)
<i>E. basilisci</i>	33 x 18	Sauria: corytophanid (common basalisk)
<i>E. bautistae</i>		Sauria: teiid (common ameiva)
<i>E. beccari</i>		Sauria: varanid (emerald tree monitor)
<i>E. becki</i>		Sauria: helodermatid (Gila monster)
<i>E. beyerae</i>		Sauria: scincid (desert lidless skink)
<i>E. bitis</i>	35 x 20	Serpentes: viperid (puff adder); colubrid (smooth green snake, common garter snake, ribbon snake)
<i>E. boae</i>	26 x 21	Serpentes: boid (emerald tree boa)
<i>E. bohemii</i>		Sauria: chamaeleonid (Meller's chameleon)
<i>E. bongaonensis</i>		Sauria: gekkonid (Tokay gecko)

<i>E. bothropis</i>	24 x 19	Serpentes: viperid (common lancehead)
<i>E. boveroi</i>	18	Sauria: gekkonid (Moreau's tropical house gecko)
<i>E. brodeni</i>	30 x 19	Testudines: testudinid (spur-thighed tortoise)
<i>E. brygooi</i>		Sauria: gekkonid (gold dust day gecko)
<i>E. caesicia</i>	27 x 24	Sauria: tropidurid (Amazon lava lizard)
<i>E. caimani</i>		Crocodylia: alligatorid (Yacare caiman)
<i>E. cameronensis</i>		Sauria: agamid (great anglehead lizard)
<i>E. carajasensis</i>	22 x 19	Testudines: testudinid (red-footed tortoise)
<i>E. carbonaria</i>	19 x 18	Testudines: testudinid (red-footed tortoise)
<i>E. caretta</i>	25 x 22	Testudines: cheloniid (loggerhead sea turtle)
<i>E. carri</i>	16 x 15	Testudines: emydid (common box turtle, eastern box turtle, three-toed box turtle, ornate box turtle)
<i>E. cascabeli</i>	37 x 17	Serpentes: viperid (prairie rattlesnake, Southern Pacific rattlesnake)
<i>E. cenchoae</i>	23 x 16	Serpentes: colubrid (common blunt-headed tree snake)
<i>E. cerastis</i>	40 x 20	Serpentes: viperid (horned desert viper, Sahara sand viper)
<i>E. cerberi</i>	18 x 17	Serpentes: colubrid (dog-faced water snake)
<i>E. chalcides</i>		Sauria: scincid (ocellated skink)
<i>E. chamaeleolidisbatbati</i>		Sauria: dactyloid (western bearded anole)
<i>E. chelydrae</i>	15 x 14	Testudines: chelydrid (common snapping turtle)
<i>E. chrysemydis</i>	23 x 15	Testudines: emydid (western painted turtle, Cagle's map turtle, common map turtle, Big Bend slider, red-eared slider)
<i>E. cicaki</i>		Sauria: gekkonid (common four-clawed gecko, common house gecko)
<i>E. cnemidophori</i>	18 x 17	Sauria: teiid (rainbow whiptail)
<i>E. coelopeltis</i>	11 x 6	Serpentes: colubrid (Montpellier snake)
<i>E. collanuli</i>	33 x 18	Serpentes: colubrid (prairie ringneck snake)
<i>E. colonorum</i>		Sauria: agamid (red-headed rock agama)
<i>E. conanti</i>	18 x 13	Serpentes: colubrid (green water snake, redbelly water snake, copperbelly water snake, Harter's water snake, Concho water snake)
<i>E. coniophanes</i>	29 x 15	Serpentes: colubrid (yellowbelly snake)
<i>E. coniophis</i>	32 x 17	Serpentes: colubrid (road guarder snake)
<i>E. cooteri</i>	26 x 11	Testudines: emydid (Texas River cooter)
<i>E. crocodyli</i>	16 x 14	Crocodylia: crocodylid (American crocodile)
<i>E. crotalae</i>	32 x 22	Serpentes: viperid (Gaboon viper, Cascabel rattlesnake)
<i>E. crotalviridis</i>	26 x 22	Serpentes: viperid (prairie rattlesnake)
<i>E. cyclopion</i>	19 x 13	Serpentes: colubrid (green water snake, yellow-belly water snake, broad-banded water snake, diamondback water snake)
<i>E. cystisfelleae</i>	33 x 21	Serpentes: colubrid (common grass snake)
<i>E. delagei</i>	20 x 17	Testudines: emydid (European pond turtle, eastern painted turtle)
<i>E. delalandii</i>		Sauria: phyllodactylid (Teneriffe wall gecko)
<i>E. dericksoni</i>	15 x 13	Testudines: trionychid (eastern spiny softshell turtle, western spiny softshell turtle, pallid spiny softshell turtle)
<i>E. desotoensis</i>	18 x 17	Serpentes: colubrid (rough earth snake, smooth earth snake)
<i>E. dhamini</i>	29 x 16	Serpentes: colubrid (oriental ratsnake)
<i>E. dipasi</i>	17	Serpentes: colubrid (slug-eating snake)
<i>E. dixoni</i>		Sauria: gekkonid (common house gecko)
<i>E. drymarchoni</i>	32 x 18	Serpentes: colubrid (indigo snake)
<i>E. egerniae</i>	30 x 16	Sauria: scincid (White's skink)
<i>E. egregia</i>		Sauria: scincid (mole skink)
<i>E. emydis</i>	23 x 17	Testudines: emydid (European pond turtle)
<i>E. eremiasica</i>		Sauria: lacertid (rapid fringe-toed lizard)
<i>E. fasciatus</i>		Sauria: scincid (five-lined skink)
<i>E. fibrilosa</i>	26 x 18	Serpentes: colubrid (rainbow water snake)
<i>E. filamentifera</i>	23 x 19	Testudines: chelydrid (common snapping turtle)
<i>E. frenatus</i>		Sauria: gekkonid (common house gecko)
<i>E. furmani</i>		Sauria: gekkonid (common house gecko)
<i>E. galapagoensis</i>		Sauria: tropidurid (hood lava lizard)
<i>E. gallaeciaensis</i>	19 x 16	Testudines: emydid (European pond turtle)
<i>E. gallotiae</i> (possibly <i>Choleoeimeria</i>)	31 x 16	Sauria: lacertid (Gallot's lizard)
<i>E. gastroauris</i>		Sauria: gekkonid (northern dtella)
<i>E. gehyrae</i>	33 x 21	Sauria: gekkonid (variegated dtella)

<i>E. gekkonis</i>	19 x 14	Sauria: gekkonid (Schlegel's Japanese gecko)
<i>E. gelasina</i>	35 x 23	Serpentes: colubrid (dog-faced water snake)
<i>E. geocheilona</i>	22 x 18	Testudines: testudinid (Charles Island giant tortoise)
<i>E. ghaffari</i>		Sauria: lacertid (Bosc's fringe-toed lizard)
<i>E. graptemydos</i>	13 x 11	Testudines: emydid (common map turtle, western painted turtle, southern painted turtle, Cagle's map turtle, Mississippi map turtle, Texas map turtle, Big Bend slider, red-eared slider); kinosternid (yellow mud turtle, Mississippi mud turtle)
<i>E. gupti</i> (syn. <i>E. cylindrical</i>)	36 x 18	Serpentes: colubrid (Asiatic water snake)
<i>E. guyuanensis</i>		Sauria: teiid (giant ameiva)
<i>E. harlani</i>	13 x 12	Testudines: chelydrid (alligator snapping turtle)
<i>E. hatcheri</i>		Crocodylia: alligatorid (American alligator)
<i>E. helenlevineae</i>		Sauria: gekkonid (spotted Indian house gecko)
<i>E. helmisophis</i>	14 x 11	Serpentes: colubrid (western worm snake, Midwest worm snake, blotched water snake, Brazo's water snake, diamondback water snake)
<i>E. hemidactyli</i>	18 x 15	Sauria: gekkonid (yellow-belly gecko)
<i>E. hispidi</i>		Sauria: tropidurid (Peters' lava lizard)
<i>E. hobartsmithi</i>	18 x 16	Serpentes: colubrid (rough earth snake, western earth snake)
<i>E. hydrophis</i>	15 x 11	Serpentes: colubrid (northern water snake, yellow-belly water snake, blotched water snake, Brazo's water snake, midland water snake, diamondback water snake)
<i>E. hynekprokopi</i>	16 x 9	Testudines: geoemydid (Indochinese box turtle)
<i>E. infirmus</i>	12	Serpentes: colubrid (diamondback water snake)
<i>E. innominata</i>	18 x 14	Testudines: trionychid (Indian flapshell turtle)
<i>E. intermedia</i>	20 x 15	Sauria: polychrotid (white anole)
<i>E. iowaensis</i>	18 x 16	Serpentes: colubrid (red-sided gartersnake, broad-banded water snake, wandering garter snake, northern water snake)
<i>E. irregularis</i>	15	Testudines: trionychid (Indian flapshell turtle)
<i>E. iversoni</i>	14 x 10	Testudines: testudinid (Galapagos tortoise)
<i>E. jaboti</i>	18 x 16	Testudines: testudinid (yellow-footed tortoise)
<i>E. jaegeri</i>	17	Serpentes: colubrid (Jaeger's ground snake)
<i>E. japaluris</i>		Sauria: agamid (Ryukyu japalura)
<i>E. japonicus</i>		Sauria: gekkonid (Schlegel's Japanese gecko)
<i>E. jirkamoraveci</i>	11 x 9	Testudines: chelid (Amazon toadhead turtle)
<i>E. juniataensis</i>	14 x 13	Testudines: emydid (northern map turtle)
<i>E. kachua</i>	15 x 14	Testudines: geoemydid (Indian tent turtle)
<i>E. kennicotti</i>	27 x 21	Serpentes: colubrid (prairie ringneck snake)
<i>E. kermorganti</i> (syn. <i>Coccidium</i>)	21	Crocodylia: gavialid (gharial)
<i>E. knowlesi</i>	18 x 16	Sauria: gekkonid (yellow-belly gecko)
<i>E. koidzumii</i>	30 x 14	Sauria: gekkonid (Schlegel's Japanese gecko)
<i>E. koormae</i> (syn. <i>E. boormae</i>)	15	Testudines: trionychid (Indian flapshell turtle)
<i>E. korros</i>	24 x 17	Serpentes: colubrid (Indo-Chinese ratsnake)
<i>E. lacertae</i>		Sauria: scincid (Far Eastern skink)
<i>E. lainsoni</i>	19 x 18	Testudines: testudinid (yellow-footed tortoise)
<i>E. lampropeltis</i>	30 x 16	Serpentes: colubrid (prairie kingsnake)
<i>E. lampropeltisgetuli</i>	38 x 21	Serpentes: colubrid (California banded kingsnake)
<i>E. lampropholidus</i>	20 x 15	Sauria: scincid (common garden skink)
<i>E. lagunculata</i>	19 x 13	Testudines: podocnemidid (Arrau turtle)
<i>E. largeni</i>		Sauria: chamaeleonid (graceful chameleon)
<i>E. lecontei</i>	28 x 16	Testudines: emydid (wood turtle)
<i>E. legeri</i>	17	Testudines: trionychid (Indian flapshell turtle)
<i>E. leimadophi</i>	17	Serpentes: colubrid (Rainha snake)
<i>E. leioccephali</i>		Sauria: leiocephalid (orange-bellied curly-tailed lizard, green-legged curly-tailed lizard)
<i>E. leiolopismatis</i>	19 x 16	Sauria: scincid (orange-tailed shadeskink)
<i>E. leptophis</i>	30 x 17	Serpentes: colubrid (Mexican parrot snake)
<i>E. lineri</i>		Sauria: gekkonid (rough-tailed gecko, tropical house gecko, Mediterranean house gecko)

<i>E. liolaemi</i>	21 x 20	Sauria: liolaemid (striped tree iguana)
<i>E. liophi</i>	13 x 12	Serpentes: colubrid (banded tricoloured snake)
<i>E. lokuma</i>	14 x 13	Testudines: pelomedusid (African helmeted turtle)
<i>E. lutotestudinis</i>	12 x 11	Testudines: kinosternid (yellow mud turtle, Mississippi mud turtle), emydid (Cagle's map turtle, common map turtle, Texas river cooter, red-eared slider)
<i>E. maboia</i>	20 x 17	Sauria: scincid (tropical house gecko)
<i>E. mammiformis</i>	30 x 19	Testudines: podocnemidid (Arrau turtle)
<i>E. marginata</i>	22 x 18	Testudines: emydid (western painted turtle, common map turtle, eastern river cooter, Big Bend slider, red-eared slider)
<i>E. mascoutini</i>	14 x 12	Testudines: trionychid (spiny softshell turtle, pallid spiny softshell turtle)
<i>E. megalostiedai</i>	14 x 13	Testudines: emydid (wood turtle)
<i>E. michikoa</i>		Sauria: gekkonid (Schlegel's Japanese gecko)
<i>E. micruri</i>	20 x 15	Serpentes: elapid (slender coral snake)
<i>E. mikanii</i>	28 x 19	Serpentes: colubrid (slug-eater snake)
<i>E. minetti</i>	20 x 13	Sauria: scincid (long-tailed skink)
<i>E. mirabilis</i>	33 x 19	Sauria: anguid (European legless lizard)
<i>E. mitraria</i>	15 x 10	Testudines: geoemydid (Reeve's turtle, Arakan forest turtle), chelydrid (common snapping turtle), emydid (western painted turtle, Blanding's turtle, European pond turtle, northern map turtle, false map turtle, Texas map turtle, Texas River cooter, three-toed box turtle, red-eared slider), kinosternid (yellow mud turtle, Illinois mud turtle), chelid (Amazon toadhead turtle)
<i>E. molochis</i>	34 x 23	Sauria: agamid (thorny devil)
<i>E. motelo</i>	17 x 9	Testudines: testudinid (yellow-footed tortoise)
<i>E. murphyi</i>		Sauria: cordylid (armadillo girdled lizard)
<i>E. najae</i>	25 x 17	Serpentes: elapid (Indian cobra)
<i>E. natricis</i>	32 x 18	Serpentes: colubrid (northern water snake, yellow-belly water snake, broad-banded water snake, midland water snake, western ribbon snake)
<i>E. navillei</i>		Serpentes: colubrid (viperine water snake)
<i>E. nebulosi</i>		Sauria: varanid (clouded monitor)
<i>E. noctisauris</i>	35 x 23	Sauria: xantusiid (Island night lizard)
<i>E. nyschanica</i>		Sauria: agamid (Turkestan rock agama)
<i>E. ondinae</i>	21	Serpentes: colubrid (Rio tropical racer)
<i>E. ornata</i>	18 x 16	Testudines: emydid (ornate box turtle)
<i>E. oxybelis</i>	32 x 17	Serpentes: colubrid (Mexican vine snake)
<i>E. pachyibroni</i>		Sauria: gekkonid (Bibron's tick-toed gecko)
<i>E. palawanensis</i>	16	Testudines: geoemydid (Asian leaf turtle)
<i>E. pallidus</i>	23 x 22	Testudines: trionychid (pallid spiny softshell turtle)
<i>E. pangshurae</i>	17 x 13	Testudines: geoemydid (Assam roofed turtle)
<i>E. papillosum</i>	32 x 18	Serpentes: colubrid (Texas patch-nosed snake)
<i>E. paraguayensis</i>		Crocodylia: alligatorid (Yacare caiman)
<i>E. patta</i>	13 x 9	Testudines: geoemydid (Indian black turtle)
<i>E. paynei</i>	23 x 19	Testudines: testudinid (gopher tortoise)
<i>E. pellopleuris</i>		Sauria: scincid (Ryukyu short-legged skink)
<i>E. peltoccephali</i>	54 x 19	Testudines: podocnemidid (big-headed Amazon River turtle)
<i>E. perazae</i>		Sauria: teiid (rainbow whiptail)
<i>E. persica</i>	29 x 16	Serpentes: colubrid (Balkan grass snake)
<i>E. petrasi</i>	23 x 19	Testudines: geoemydid (Asian leaf turtle)
<i>E. phelsumae</i>		Sauria: gekkonid (Madagascar day gecko)
<i>E. phisalixae</i>	40 x 20	Serpentes: viperid (horned desert viper)
<i>E. pintoii</i>	32 x 21	Crocodylia: alligatorid (alligator)
<i>E. piscatori</i>	30 x 23	Serpentes: colubrid (checkered keelback)
<i>E. pleistocenensis</i>	28 x 19	Serpentes: colubrid (Florida crowned snake)
<i>E. podocnemis</i>	17 x 13	Testudines: podocnemidid (Arrau turtle)
<i>E. poecilogyri</i>	15	Serpentes: colubrid (Rainha snake)
<i>E. polydaedali</i>		Sauria: varanid (Nile monitor)
<i>E. pseudemydis</i>	19 x 18	Testudines: emydid (ornate slider, red-eared slider, western chicken turtle, wood turtle, Texas River cooter, Big Bend slider)
<i>E. pseudogeographica</i>	20 x 14	Testudines: emydid (false map turtle, western painted turtle, Cagle's

		map turtle, Ouachita map turtle, Big Bend slider, red-eared slider)
<i>E. ptyas</i>	35 x 25	Serpentes: colubrid (oriental rat snake)
<i>E. pythonis</i>	28 x 17	Serpentes: boid (Indian rock python, African rock python)
<i>E. rabiti</i>		Sauria: gekkonid (leopard gecko?)
<i>E. raillieti</i>	18 x 15	Sauria: anguid (slowworm)
<i>E. rangei</i>		Sauria: gekkonid (Namib sand gecko)
<i>E. rhombifera</i>	13	Serpentes: colubrid (green water snake, diamondback water snake)
<i>E. rimahensis</i>		Sauria: varanid (desert monitor)
<i>E. rochalimai</i>	31 x 17	Sauria: gekkonid (Moreau's tropical house gecko)
<i>E. rountreei</i>		Sauria: lacertid (Japanese grass lizard)
<i>E. sami</i>		Sauria: scincid (Ousima skink)
<i>E. samyadeli</i> (syn. <i>E. samiae</i> <i>nomen preoccupied</i>)	45	Serpentes: boid (reticulated python)
<i>E. sanctaluciae</i>	17	Sauria: dactyloid (St Lucia anole)
<i>E. scaphiodontophis</i>	30 x 15	Serpentes: colubrid (Guatemala neckband snake)
<i>E. sceloporis</i>	27 x 22	Sauria: phrynosomatid (Clark's spiny lizard, desert spiny lizard, western fence lizard)
<i>E. schmidti</i>		Sauria: lacertid (Schmidt's fringe-fingered lizard)
<i>E. schwartzi</i>		Sauria: dactyloid (armoured anole)
<i>E. scincellae</i>		Sauria: scincid (little brown skink)
<i>E. scinci</i>	33 x 19	Sauria: scincid (sandfish skink)
<i>E. scriptae</i>	24 x 14	Testudines: emydid (red-eared slider)
<i>E. septemvittata</i>	15 x 14	Serpentes: colubrid (queen snake)
<i>E. serpenticola</i>	20 x 18	Serpentes: colubrid (redstripe ribbon snake, broad-banded water snake, midland water snake, western ribbon snake, checkered garter snake)
<i>E. serpentina</i>	13 x 8	Testudines: chelydrid (common snapping turtle)
<i>E. sexlineatus</i>		Sauria: teiid (six-lined racerunner)
<i>E. sibon</i>	24 x 14	Serpentes: colubrid (cloudy snail-eating snake)
<i>E. simonkingi</i>		Sauria: gekkonid (Smith's green-eyed gecko, lined gecko, lined day gecko)
<i>E. sinaitae</i>		Sauria: agamid (Sinai agama)
<i>E. sipedon</i>	18 x 16	Serpentes: colubrid (northern water snake, blotched water snake, yellow-belly water snake, broad-banded water snake, midland water snake)
<i>E. somervellensis</i>	21 x 16	Testudines: emydid (Texas River cooter, Missouri River cooter)
<i>E. spinifera</i>	16 x 14	Testudines: trionychid (pallid spiny softshell turtle)
<i>E. stenocerci</i> (syn. <i>E. tropidura</i>)	26 x 20	Sauria: tropidurid (Amazon lava lizard)
<i>E. stenodactyli</i>		Sauria: gekkonid (elegant gecko)
<i>E. sternfeldi</i>		Sauria: scincid (Centralian blue-tongued skink)
<i>E. stolatae</i>	20	Serpentes: colubrid (buff striped keelback)
<i>E. striatula</i>	13	Serpentes: colubrid (rough earth snake)
<i>E. stylosa</i>	17 x 13	Testudines: emydid (red-eared slider, Big Bend slider)
<i>E. subcylindrica</i>		Sauria: teiid (giant ameiva)
<i>E. surinensis</i>	23 x 21	Testudines: geoemydid (Mekong snail-eating turtle)
<i>E. takydromi</i>	28 x 16	Sauria: lacertid (six-striped long-tailed lizard, green grass lizard, Japanese grass lizard)
<i>E. tarentolae</i>		Sauria: gekkonid (Moorish wall gecko)
<i>E. telfordi</i>		Sauria: gekkonid (common four-clawed gecko)
<i>E. tenuis</i>	17 x 11	Serpentes: colubrid (redbelly water snake, diamond-backed water snake, common water snake)
<i>E. tetradacrutata</i>	20 x 19	Testudines: emydid (western painted turtle, common map turtle, red-eared slider)
<i>E. texana</i>	21 x 8	Testudines: emydid (Texas River cooter)
<i>E. tilburyi</i>		Sauria: chamaeleonid (Jackson's chameleon)
<i>E. tokayae</i>		Sauria: gekkonid (Tokay gecko)
<i>E. trachemydis</i>	25 x 14	Testudines: emydid (red-eared slider, western painted turtle, Cagle's map turtle, Big Bend slider)
<i>E. triangularis</i>	13	Testudines: trionychid (Ganges softshell turtle)
<i>E. trionyxae</i>	17	Testudines: trionychid (Ganges softshell turtle)

<i>E. tropidonoti</i>	23 x 14	Serpentes: colubrid (common grass snake)
<i>E. turcicus</i>		Sauria: gekkonid (Mediterranean house gecko)
<i>E. typhlopisi</i>	29 x 20	Serpentes: typhlophid (European blind snake)
<i>E. umis</i>	33 x 19	Sauria: phrynosomatid (Colorado desert fringe-toed lizard)
<i>E. urosauris</i>	32 x 20	Sauria: phrynosomatid (long-tailed brush lizard)
<i>E. varani</i>	19 x 13	Sauria: varanid (monitor)
<i>E. vesicostieda</i>	23 x 19	Testudines: trionychid (eastern spiny softshell turtle, western spiny softshell turtle)
<i>E. vittati</i>		Sauria: gekkonid (lined gecko)
<i>E. welcomei</i>	30 x 16	Testudines: testudinid (red-footed tortoise)
<i>E. witcheri</i>		Sauria: amphisbaenid (Mann's worm lizard)
<i>E. zbatagura</i>	7 x 6	Testudines: geoemydid (northern river terrapin)
<i>E. zamenis</i>	29 x 17	Serpentes: colubrid (eastern blue racer, prairie king snake, speckled king snake, eastern milk snake, eastern coachwhip)
<i>E. zulphinensis</i>		Sauria: varanid (desert monitor)
Amphibia		
<i>E. algonquini</i>	16	Anura: ranid (American bullfrog, green frog, mink frog, wood frog)
<i>E. ambystomae</i>	31 x 18	Urodela: ambystomatid (tiger salamander, seal salamander, blackbelly salamander)
<i>E. belawini</i>	12	Anura: hylid (European tree frog)
<i>E. bufomarini</i>	9	Anura: bufonid (cane toad)
<i>E. canaliculata</i>	39 x 23	Urodela: salamandrid (alpine newt, northern crested newt, palmate newt, smooth newt)
<i>E. cyanophlyctis</i>	18 x 16	Anura: dicroglossid (skittering frog)
<i>E. dermatophis</i>	20 x 18	Gymnophiona: dermatophiid (Mexican burrowing caecilian)
<i>E. distorta</i>	30 x 16	Urodela: ambystomatid (tiger salamander)
<i>E. fitchi</i>	22 x 14	Anura: ranid (wood frog)
<i>E. flexuosa</i>	17	Anura: hylid (Strecker's chorus frog)
<i>E. fragilis</i>	19 x 15	Anura: rhacophorid (central foam-nest tree frog)
<i>E. grobbeni</i>	11 x 10	Urodela: salamandrid (alpine salamander)
<i>E. himalayana</i>	9	Anura: bufonid (Himalayan toad)
<i>E. kermiti</i>	25 x 20	Anura: ranid (American bullfrog, green frog, mink frog, wood frog)
<i>E. kingi</i>	20 x 18	Urodela: ambystomatid (tiger salamander)
<i>E. labbei</i>	nd	Urodela: salamandrid (great crested newt)
<i>E. laminata</i>	10	Anura: bufonid (black-spined toad)
<i>E. leptodactyli</i>	23 x 17	Anura: leptodactylid (criolla frog)
<i>E. longaspora</i>	28	Urodela: salamandrid (eastern newt)
<i>E. mazzai</i> (syn. <i>E. transcaucasica</i>)	17	Anura: bufonid (common toad)
<i>E. megaresidua</i>	43 x 33	Urodela: salamandrid (eastern newt)
<i>E. microcapi</i>	38 x 25	Urodela: ambystomatid (barred tiger salamander)
<i>E. neglecta</i>	10	Anura: ranid (edible frog, common frog)
<i>E. nipponensis</i>	50 x 35	Urodela: salamandrid (Japanese firebelly newt)
<i>E. opacum</i>	17 x 12	Urodela: ambystomatid (marbled salamander)
<i>E. prevoti</i>	21 x 14	Anura: ranid (edible frog)
<i>E. propria</i>	40 x 24	Urodela: salamandrid (alpine salamander, alpine newt, warty newt, palmate newt, marbled newt, smooth newt)
<i>E. pyrrogaster</i>	43 x 40	Urodela: salamandrid (Japanese firebelly newt)
<i>E. ranae</i>	20	Anura: ranid (edible frog, common frog)
<i>E. ranarum</i>	19 x 14	Anura: ranid (edible frog, common frog)
<i>E. saitamaensis</i>	25	Urodela: salamandrid (Japanese firebelly newt)
<i>E. salamandrae</i>	24	Urodela: salamandrid (fire salamander)
<i>E. salamandraeatrae</i> (species inquirenda)	27 x 23	Urodela: salamandrid (alpine salamander)
<i>E. spherica</i>	35	Urodela: salamandrid (alpine newt, northern crested newt, palmate newt, smooth newt, sword-tail newt)
<i>E. streckeri</i>	19	Anura: hylid (Strecker's chorus frog, western chorus frog)
<i>E. tarichae</i>	12 x 11	Urodela: salamandrid (orange-bellied newt)
<i>E. terraepokotorum</i>	20 x 16	Anura: dicroglossid (African tigrine frog)
<i>E. tertia</i>	26 x 21	Urodela: salamandrid (alpine newt, northern crested newt)
<i>E. urodela</i>	22	Urodela: ambystomatid (tiger salamander, barred tiger salamander)

<i>E. waltoni</i>	22 x 19	Urodela: ambystomatid (tiger salamander)
<i>E. wambaensis</i>	17 x 13	Anura: hyperoliid (common reed frog)
Bony fish		
<i>E. acerinae</i>	11	freshwater Perciformes: percid (Eurasian ruffe)
<i>E. adioryxi</i>	9.7	marine Beryciformes: holocentrid (red soldierfish)
<i>E. ambassi</i>		freshwater Cypriniformes: cyprinid (barb)
<i>E. amудариника</i>	26	freshwater Cypriniformes: cyprinid (topmouth gudgeon, Chinese lake gudgeon)
<i>E. amurensis</i>	24	freshwater Cypriniformes: cyprinid (topmouth gudgeon, common rudd)
<i>E. aristichthysi</i>	12	freshwater Cypriniformes: cyprinid (bighead carp, silver carp)
<i>E. ashburneri</i>	7.7-9.2	freshwater Perciformes: percichthyid (golden perch); marine Spariformes: sparid (red pandora, blue-spotted seabream)
<i>E. atherinae</i>	11.5-13.5	euryhaline amphidromous Atheriniformes: atherinid (big-scale sand smelt)
<i>E. banyulensis</i>	6.5-8.5	marine Labriformes: labrid (axillary wrasse, grey wrasse)
<i>E. barbi</i>	24 x 21	freshwater Cypriniformes: cyprinid (Bulatmai barbel)
<i>E. baueri</i>	19 x 16	freshwater Cypriniformes: cyprinid (Crucian carp)
<i>E. bouixi</i>	6.0-7.6	marine Perciformes: moronid (European sea bass)
<i>E. branchyphila</i>	23 x 9	freshwater Cypriniformes: cyprinid (roach)
<i>E. brevoortiana</i>	17-30 x 15-22	marine Clupeiformes: clupeid (menhaden)
<i>E. capoetobramae</i>		freshwater Cypriniformes: cyprinid (sharpray)
<i>E. carassii</i>	22	freshwater Cypriniformes: cyprinid (Crucian carp)
<i>E. carassiusaurati</i>	14	freshwater Cypriniformes: cyprinid (goldfish)
<i>E. catalana</i>		marine Labriformes: labrid (axillary wrasse, grey wrasse, blackbar hogfish), scarid (Guinean parrotfish)
<i>E. catostomi</i>	7	freshwater Cypriniformes: catostomid (white sucker)
<i>E. cheilodactyli</i>	10.5-11.5	marine Perciformes: latrid (red morwong)
<i>E. cheissini</i>	20	freshwater Cypriniformes: cyprinid (gudgeon, sharpbelly, barbel steed)
<i>E. chenchingensis</i>	23 x 13	freshwater Cypriniformes: cyprinid (goldfish)
<i>E. ciliatae</i>	13.4-14.2	marine Perciformes: sillaginid (sand whiting)
<i>E. citriformis</i>	15	marine Scorpaeniformes: agonid (poacher)
<i>E. clini</i>	16 x 13	marine Perciformes: clinid (highfin klipfish)
<i>E. cobitis</i>	20	freshwater Cypriniformes: cobitidid (spined loach)
<i>E. coreia</i>	11	freshwater Cypriniformes: cyprinid (bronze gudgeon)
<i>E. cotti</i>	11	freshwater Scorpaeniformes: cottid (European bullhead, slimy sculpin)
<i>E. credintsi</i>	13	freshwater Gobiiformes: gobiid (tubenose goby)
<i>E. ctenopharyngodoni</i>	25	freshwater Cypriniformes: cyprinid (grass carp)
<i>E. culteri</i>	10	freshwater Cypriniformes: cyprinid (predatory carp)
<i>E. cylindrospora</i>	11	freshwater Cypriniformes: cyprinid (common bleak)
<i>E. cyprini</i>	9	freshwater Cypriniformes: cyprinid (Crucian carp, European carp, tench)
<i>E. cyprinorum</i>	13	freshwater Cypriniformes: cyprinid (common bream, common barbel, roach, Eurasian minnow, common minnow, common rudd)
<i>E. dakarensis</i>	11.4	marine Perciformes: serranid (blue-spotted seabass, blacktip grouper)
<i>E. daviesae</i>	13	freshwater Gobiiformes: gobiid (bighead goby, monkey goby)
<i>E. degiustii</i>	21	freshwater Cypriniformes: cyprinid (common shiner, bluntnose minnow, fathead minnow)
<i>E. dicentrarchi</i>	10.6-12.2	marine Perciformes: moronid (European bass)
<i>E. dingleyi</i>	16.1-20 x 13.9-19.2	marine Perciformes: blenniid (shanny)
<i>E. dogieli</i> (syn. <i>E. sphaerica</i>)	5	marine Perciformes: stichaeid (ocellated blenny)
<i>E. duszynskii</i>	12	freshwater Scorpaeniformes: cottid (mottled sculpin)
<i>E. dykova</i>	7.2-8.4	marine Perciformes: latrid (red morwong)
<i>E. eiminens (eminens)</i>	15	catadromous Anguilliformes: anguillid (Japanese eel)
<i>E. esoci</i>	13 x 11	freshwater Esociformes: esocid (northern pike), Perciformes: centrarchid (pumpkinseed)
<i>E. etheostomae</i>		freshwater Perciformes: percid (Iowa darter, Johnny darter)
<i>E. ethmalosae</i>	22-53	freshwater Clupeiformes: clupeid (bonga shad)
<i>E. etrumei</i>	33-36	marine Clupeiformes: dussumierid (round-herring)
<i>E. evaginata</i>	10-12	marine Scorpaeniformes: sebastid (white-edged rockfish), cottid

		(Steller's sculpin)
<i>E. fernandoae</i>	8 x 7	freshwater Cypriniformes: catostomid (white sucker, northern hogsucker)
<i>E. fluviatili</i>	20-22.5	freshwater Perciformes: percid (European perch)
<i>E. gabonensis</i>	9.6	marine Scorpaeniformes: triglid (Gabon gurnard)
<i>E. glenorensis</i>	11	freshwater Perciformes: moronid (white perch)
<i>E. glossogobii</i>	11 x 10	freshwater Perciformes: gobiid (tank goby)
<i>E. gobii</i>	18 x 14	marine Perciformes: gobiid (barehead goby)
<i>E. haichengensis</i>	8	freshwater Cypriniformes: cyprinid (European carp)
<i>E. haneki</i>	7	freshwater Gasterosteiformes: gasterosteid (brook stickleback)
<i>E. harpodoni</i>	12-16	freshwater Aulopiformes: synodontid (bummalo)
<i>E. hemibarba</i>	10	freshwater Cypriniformes: cyprinid (spotted steed)
<i>E. hemiculterii</i>	11	freshwater Cypriniformes: cyprinid (sharpbelly)
<i>E. hexagona</i>	12	marine Gadiformes: lotid (shore rockling)
<i>E. hoffmani</i>	12 x 9	freshwater Esociformes: umbrid (central mudminnow)
<i>E. huizhouensis</i>	12	freshwater Siluriformes: clariid (Hong Kong catfish)
<i>E. hunggangensis</i>	38	freshwater Cypriniformes: cobitidid (pond loach)
<i>E. hupehensis</i>	10	freshwater Cypriniformes: cyprinid (goldfish)
<i>E. hybognathi</i>	14	freshwater Cypriniformes: cyprinid (brassy minnow)
<i>E. hypophthalmichthys</i>	24 x 21	freshwater Cypriniformes: cyprinid (silver carp)
<i>E. ictaluri</i>	10	freshwater Siluriformes: ictalurid (brown bullhead)
<i>E. insignis</i>	10-13	marine Scorpaeniformes: scorpaenid (small red scorpionfish)
<i>E. iroquoina</i>	10	freshwater Cypriniformes: cyprinid (common shiner), plus experimental infections in cyprinid (fathead minnow)
<i>E. ivanae</i>	10-11.5	marine Perciformes: serranid (comber, painted comber)
<i>E. jadvigae</i>		marine Gadiformes: macrourid (whiptail, bigeye grenadier)
<i>E. kassaii</i>	12	freshwater Esociformes: umbrid (European mudminnow)
<i>E. kotorensis</i>	13-14.5	marine Perciformes: centracanthid (blotched picarel)
<i>E. kwangtungensis</i>	10	freshwater Perciformes: channid (northern snakehead, blotched snakehead)
<i>E. lairdi</i>	10-15	marine Scorpaeniformes: cottid (shorthorn sculpin)
<i>E. laureleus</i> (syn. <i>Goussia</i>)	12	freshwater Perciformes: percid (yellow perch), centrarchid (pumpkinseed)
<i>E. liaohoensis</i>	27	freshwater Cypriniformes: cyprinid (goldfish)
<i>E. liaoningensis</i>	8	freshwater Cypriniformes: cyprinid (Chinese false gudgeon, goldfish)
<i>E. liuhaoensis</i>	25 x 22	freshwater Cypriniformes: cyprinid (bighead carp, silver carp)
<i>E. lydiae</i>	12	freshwater Salmoniformes: salmonid (brown trout)
<i>E. macoresidualis</i>	14	freshwater Cypriniformes: cyprinid (white-finned gudgeon)
<i>E. macropoda</i>	10	freshwater Anabantiformes: osphronemid (paradise fish)
<i>E. maggiuae</i>	12	marine Perciformes: sparid (common pandora)
<i>E. marmorata</i>	10	marine Perciformes: gobiid (tubenose goby)
<i>E. matskaii</i>	11	freshwater Esociformes: umbrid (European mudminnow)
<i>E. merlangi</i>		marine Gadiformes: gadid (whiting)
<i>E. meszarosi</i>	11	freshwater Esociformes: umbrid (European mudminnow)
<i>E. micropteri</i>	12	freshwater Perciformes: centrarchid (smallmouth bass, largemouth bass)
<i>E. misgurni</i>	15	freshwater Cypriniformes: cobitidid (European weather loach, spined loach)
<i>E. molnari</i>	19 x 12	freshwater Cypriniformes: cyprinid (gudgeon)
<i>E. moronei</i>	8	freshwater Perciformes: moronid (white perch)
<i>E. muraiiae</i>	47 x 36	freshwater Cypriniformes: cobitidid (European weather loach)
<i>E. myoxocephali</i>	34-40	marine Scorpaeniformes: cottid (great sculpin)
<i>E. nemethi</i>	18 x 13	freshwater Cypriniformes: cyprinid (common bleak)
<i>E. nesowai</i>	12-14	marine Perciformes: gerreid (common silver belly)
<i>E. newchongensis</i>	18	freshwater Cypriniformes: cyprinid (goldfish, predatory carp)
<i>E. nicollei</i>	26 x 16	freshwater Cypriniformes: cyprinid (crucian carp)
<i>E. nishin</i>	48	marine Clupeiformes: clupeid (Atlantic herring, Pacific herring)
<i>E. notopteri</i>	24 x 22	freshwater Osteoglossiformes: notopterid (bronze featherback, Indian featherback)
<i>E. nucleocola</i>	12-14	marine Scorpaeniformes: cottid (shorthorn sculpin)
<i>E. ochetobiusi</i>	8	freshwater Cypriniformes: cyprinid (sale niglask)

<i>E. odontobutis</i>	14	freshwater Gobiiformes: odontobutid (dark sleeper)
<i>E. ojbwana</i>	11	freshwater Scorpaeniformes: cottid (mottled sculpin)
<i>E. ophiocephali</i>	9	freshwater Anabantiformes: channid (snakehead, blotched snakehead)
<i>E. orientalis</i>	30	freshwater Cypriniformes: cobitid (Amur weatherfish)
<i>E. osmeri</i>	11	freshwater Osmeriformes: osmerid (rainbow smelt)
<i>E. parasiluri</i>	10	freshwater Siluriformes: silurid (Amur catfish)
<i>E. pastuszkoi</i>	14 x 12	freshwater Cypriniformes: nemacheilid (stone loach)
<i>E. patagonensis</i>	43-44.1	marine Clupeiformes: engraulid (Argentine anchovy)
<i>E. patersoni</i>	12 x 11	freshwater Perciformes: centrarchid (pumpkinseed)
<i>E. percae</i>	13	freshwater Perciformes: percid (redfin perch)
<i>E. perciformis</i>	9.7	marine Perciformes: haemulid (bastard grunt), serranid (Dungat grouper)
<i>E. petrovici</i>	11-12.5	marine Perciformes: labrid (ocellated wrasse)
<i>E. philypnodon</i>	8.4-9.2	freshwater Gobiiformes: eleotrid (bighead gudgeon)
<i>E. phyllopterycis</i> (syn. <i>E. phyllopteryx</i>)	28-34.4	marine Syngnathiformes: syngnathid (common seadragon)
<i>E. piraudi</i>	12	freshwater Scorpaeniformes: cottid (European bullhead)
<i>E. pleurostici</i>	9.1-9.6	marine Tetraodontiformes: tetraodontid (toadfish)
<i>E. pneumatophori</i>	12.5-13	marine Scombriformes: scombrid (chub mackerel)
<i>E. pseudorasbori</i>	26	freshwater Cypriniformes: cyprinid (stone moroko)
<i>E. pungitii</i>	13 x 10	freshwater Gasterosteiformes: gasterosteid (ninespine stickleback)
<i>E. quadricornis</i>	16	marine Scorpaeniformes: cottid (fourhorn sculpin)
<i>E. quentini</i>		marine Myliobatiformes: myliobatid (spotted eagle ray)
<i>E. radae</i>	27 x 24	freshwater Cypriniformes: cyprinid (spined loach)
<i>E. raibauti</i>	30-40 x 29-35	marine Gadiformes: gadid (poor cod, Norway pout)
<i>E. rivieri</i>	14 x 9	freshwater Perciformes: percid (redfin perch)
<i>E. rohdei</i>	7-8.5	marine Tetraodontiformes: monacanthid (fan-bellied leatherjacket)
<i>E. roussillona</i>	10-12	marine Perciformes: labrid (brown wrasse)
<i>E. rouxi</i>	10	freshwater Cypriniformes: cyprinid (tench)
<i>E. rutili</i>	29 x 11	freshwater Cypriniformes: cyprinid (roach)
<i>E. ryptici</i>	8.1	marine Perciformes: serranid (spotted soapfish)
<i>E. salvelini</i>	12	freshwater Salmoniformes: salmonid (brown trout)
<i>E. sardinae</i> (syn. <i>E. oxyphila</i> , <i>oxyspora</i> , <i>snijdersi</i> , <i>Coccidium</i>)	33-65	marine Clupeiformes: clupeid (Atlantic herring, European pilchard, South American pilchard, round sardinella, Madeiran sardinella, European anchovy, European sprat)
<i>E. saurogobii</i>	9	freshwater Cypriniformes: cyprinid (grass carp)
<i>E. schizothoraci</i>		freshwater Cypriniformes: cyprinid (Sattar snowtrout)
<i>E. schulmani</i>	20	freshwater Cypriniformes: cyprinid (common chub)
<i>E. scorpaenae</i>	11	marine Scorpaeniformes: scorpaenid (black scorpionfish)
<i>E. sericei</i> (syn. <i>E. rhodei</i>)	19	freshwater Cypriniformes: cyprinid (Amur bitterling)
<i>E. siliculiformis</i> (syn. <i>Goussia</i>)	27 x 14	freshwater Cypriniformes: cyprinid (common bream, common bleak, common roach, common rudd, gudgeon, long-snouted Amur gudgeon)
<i>E. stankovitchi</i> (syn. <i>Goussia</i>)	10	freshwater Cypriniformes: cyprinid (common bream, common bleak, asp, Pacific redfin, common rudd)
<i>E. sillaginis</i>	8-9.5	marine Perciformes: sillaginid (sand whiting)
<i>E. siluri</i>	26 x 22	freshwater Siluriformes: silurid (wels catfish)
<i>E. smarisi</i> (syn. <i>E. maenae</i>)	8-9.5	marine Perciformes: sparid (picarel)
<i>E. soufiae</i> (syn. <i>E. sontlae</i>)	18	freshwater Cypriniformes: cyprinid (western vairone)
<i>E. sourogobii</i>		freshwater Cypriniformes: cyprinid (Chinese lizard gudgeon)
<i>E. stizostedioni</i>	11 x 8	freshwater Perciformes: percid (zander)
<i>E. strelkovi</i>	16	freshwater Cypriniformes: cyprinid (stone moroko)
<i>E. syacii</i>	10.7	marine Pleuronectiformes: paralichthyid (Channel flounder)
<i>E. symphodi</i>	16-19	marine Perciformes: labrid (pointed-snout wrasse)
<i>E. syngnathi</i>	24.5-32 x 16.7- 24.5	marine Syngnathiformes: syngnathid (black-striped pipefish)
<i>E. syrdarinica</i>	25	freshwater Cypriniformes: cyprinid (grass carp)
<i>E. tedlai</i>	10	freshwater Perciformes: percid (yellow perch)
<i>E. triglae</i>	9.8-19.5	marine Scorpaeniformes: triglid (tub gurnard, piper gurnard)

<i>E. variabilis</i> (syn. <i>Goussia</i> , <i>Coccidium</i>)	11.9-14.6 x 9.2- 11.9	marine Scorpaeniformes: cottid (lonspined bullhead); Anguilliformes: anguillid (European eel); Perciformes: labrid (corkwing wrasse); Gobiiformes: gobiid (rock goby)
<i>E. varicorhini</i>		freshwater Cypriniformes: cyprinid (Caucasian scraper)
<i>E. wierzejski</i>	12	freshwater Cypriniformes: cyprinid (European carp)
Cartilaginous fish		
<i>E. chollaensis</i>	11.2-16 x 8-10.8	marine Myliobatiformes: urotrygonid (round stingray)
<i>E. euzeti</i>	12.5-14	marine Myliobatiformes: myliobatid (common eagle ray)
<i>E. gigantea</i> (syn. <i>Pfeifferia</i> , <i>Pfeifferella</i> , <i>Coccidium</i>)	70 x 40	marine Carcharhiniformes: scyliorhinid (porbeagle)
<i>E. halleri</i>	15-18	marine Myliobatiformes: urotrygonid (round stingray)
<i>E. kayarensis</i>	16.7 x 13.9	marine Rajiformes: rajid (brown ray)
<i>E. ottojroveci</i>	12-13	marine Rajiformes: rajid (thornback skate, brown ray)
<i>E. palavensis</i>	12-14.4	marine Carcharhiniformes: pentanchid (blackmouth catshark)
<i>E. raiarum</i> (syn. <i>E. rajarum</i>)	17.5-28	marine Rajiformes: rajid (blue skate)
<i>E. scyllii</i>	<i>nomen nudum</i>	marine Carcharhiniformes: scyliorhinid (catshark)
<i>E. southwelli</i> (syn. <i>E. quentini</i>)	15-63 x 10-15	marine Rajiformes: aetobatid (white-spotted eagle ray), rhinopterid (cownose ray)
<i>E. zygaenae</i>	12.1-14.3	marine Carcharhiniformes: sphyrid (winghead shark)
Invertebrates		
<i>E. beauchampi</i>	<i>nomen nudum</i>	Hemichordata: ptychoderid (acorn worm)
<i>E. ekdysios</i>	30 x 18	Diplopoda: julid (black millipede)
<i>E. epidermica</i>	<i>nomen nudum</i>	Hemichordata: ptychoderid (acorn worm)
<i>E. hagenmuelleri</i>	17 x 14	Chilopoda: himantariid (centipede)
<i>E. hirsuta</i>	25	Coleoptera: gyrinid (whirligig beetle)
<i>E. hyalinum</i>	16	Coleoptera (unspecified beetle)
<i>E. lacazei</i>	38 x 32	Chilopoda: lithobiid (centipedes)
<i>E. mecistophori</i>	nr	Chilopoda: mecistocephalid (centipede)
<i>E. perichaetae</i>	<i>nomen nudum</i>	Oligochaeta: megascolecid (earthworms)
<i>E. pfeifferi</i>	nr	Chilopoda: geophilid (centipede)
<i>E. schaudinniana</i> (syn. <i>E. schubergi</i>)	19	Chilopoda: lithobiid (centipede)
<i>E. simondi</i>	24	Chilopoda: himantariid (centipede), lithobiid (centipedes)

Parasite morphology: Coccidian parasites form three developmental stages: meronts (schizonts), gamonts and oocysts. Meronts range in size depending on parasite species, location in the host and stage of maturity. They begin as small basophilic rounded cells (mother meronts) located intracellularly within host cells. The meronts form numerous daughter merozoites by endogenous division of the nucleus followed by cytokinesis. Mature meronts appear as membrane-bound clusters of small basophilic bodies (similar to bunches of grapes). Individual meronts usually range in diameter from 10-100 μm but some species form enormous megaloschizonts (up to 1 mm in diameter). Gamonts exhibit sexual differentiation, with microgamonts (male) apparent as multinucleate basophilic stages ultimately shedding small biflagellated microgametes; and macrogamonts (female) evident as uninucleate eosinophilic cells with a single ovoid nucleus. Developing oocysts contain numerous eosinophilic wall-forming bodies which give rise to the tough outer oocyst walls. Unsporulated oocysts contain a developing sporoblast which eventually undergoes sporulation forming sporocysts which contain the infective sporozoites. *Eimeria* oocysts exhibit a characteristic 1:4:2 configuration, that is, each oocyst contains 4 sporocysts each containing 2 sporozoites. Oocysts are generally ovoid to ellipsoid in shape, range from 10-40 μm in length by 10-30 μm in width, and vary in their possession of specialized structures, such as oocyst spines, projections, micropyles, micropyle caps, residua, polar granules, sporocyst sporopodia, ridges, sutures, residua, Stieda bodies, sub-Stieda or para-Stieda bodies, sporozoite refractile bodies and striations.

Site of infection: Most species undergo endogenous development in the intestinal mucosa (small and/or large intestines) whereas some species develop in the liver, gall bladder or kidneys. They generally exhibit rigid tissue tropism, infecting host cells in particular locations. The parasites undergo several cycles of schizogony culminating in the lysis of host cells to release numerous merozoites (often 30 or more per generation). Ultimately, gamonts are formed which mature to produce micro- and macro-gametes that undergo fertilization forming a non-motile zygote (oocyst) which is excreted with host faeces.

Pathogenesis: Most species are not significant pathogens and cause little or no disease. Certain species, however, are highly pathogenic and cause catarrhal or haemorrhagic enteritis by severe erosion of the mucosal membranes through cell lysis resulting in profuse watery-to-bloody diarrhoea. Clinical disease is not usually manifest until cumulative tissue damage occurs; often associated with second or third generation merogony (parasite pathogenicity is often directly related to the species proliferative potential). Moderately-affected animals may show progressive signs such as poor weight gain or weight loss, weakness and emaciation, while severely-affected individuals may die soon after the appearance of disease. Pathogenicity depends on many factors; such as parasite species, viability, infectivity, virulence, tropism, host age, nutritional status, immunological competence, as well as prevailing environmental conditions (temperature, moisture) and management practices. Young animals are most susceptible to clinical disease, although survivors develop strong specific protective immunity against subsequent infection and disease.

Developmental cycle and mode of transmission: Oocysts excreted with host faeces contaminate the external environment, but they must undergo internal sporulation (sporozoite formation) before they become infective (usually takes several days). New hosts are infected when they ingest sporulated oocysts contaminating food or water supplies (faecal-oral transmission). Following ingestion, oocysts and sporocysts excyst in the intestines releasing their contained sporozoites which invade host cells to begin merogony. Excystation stimuli include appropriate post-gastric physico-chemical conditions, such as oxygen levels, pH, bile salts, pancreatic enzymes, etc. The parasites undergo 2-3 successive generations of merogony before forming male and female gametes which fertilize to form oocysts subsequently voided with host faeces.

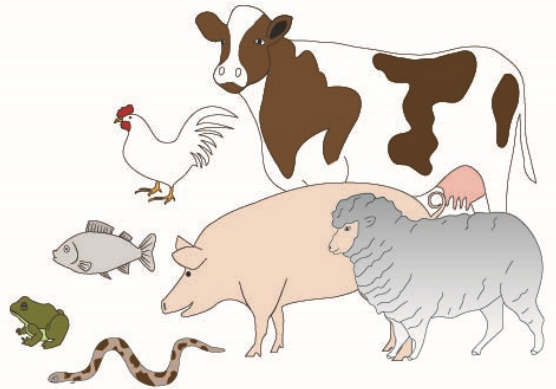
Differential diagnosis: Clinical signs usually coincide with parasite patency (patent period = period during which oocysts are produced). Infections are usually diagnosed by the coprological examination of host faeces for coccidial oocysts (concentrated using various sedimentation-flotation techniques). Unstained oocysts are best observed by light microscopy using suboptimal transmitted illumination (condenser wound down to introduce diffraction), phase-contrast or interference-contrast optics. Fresh faecal samples may only contain unsporulated oocysts so differential specific diagnosis may sometime require short-term storage to facilitate sporulation (2% potassium dichromate is often used to suppress microflora during storage, but not for piscine species, and refrigeration can slow the process down if required for field samples). In the event of fatalities, autopsy may reveal blood in the lumen of the intestines, small white foci in inflamed gut tissues and numerous endogenous developmental stages in mucosal scrapings. Researchers have recently used a range of molecular techniques to characterize genetic variation between and within parasite species, but few techniques are suitable for routine diagnostic use.

Treatment and control: Disease progression is usually so rapid that any therapeutic (curative) treatment may simply be too late. For this reason, continuous in-food or in-water medication is often used for prophylactic (preventative) treatment in many intensive animal industries. A wide range of drugs are available, including those with coccidio-static (reversible suppressive) activity or coccidio-cidal (irreversible lethal) activity. The main drug groups include sulfonamides (sulfanilamide, trimethoprim, ethopabate), pyridinols (clopidol, decoquinate), nitrobenzamides (zoalene), organic arsenicals (roxarsone), nitrofurans (furazolidone, amprolium), quinazolinones (halofuginone), polyether ionophorous antibiotics (monensin, laslocid, salinomycin, narasin), asymmetric (diclazuril) and symmetric (toltrazuril) triazines. Regrettably, there are mounting problems being encountered with drug

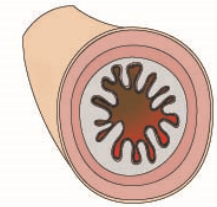
resistance amongst many coccidian species, especially that against synthetic drugs which tends to persist within parasite populations. Many industries recommend periodic rotation between different drug groups and the use of combination (cocktail) drugs to minimize the occurrence of resistance. Most coccidial infections stimulate the development of strong protective immune responses, albeit transient unless preinfective (short-lived unless parasites persist). There has been considerable success with control through immunoprophylaxis using attenuated or precocious strains of parasites, particularly in the poultry industry. Researchers are now attempting to develop recombinant subcellular vaccines. Outbreaks can generally be controlled by management practices based around improving hygiene, proper sanitation, reducing crowding, removing contaminated litter, isolating infected individuals, pasture rotation, cleaning water and feed troughs and preventing their contamination with faecal material. Chemical disinfection is usually impractical as the oocysts are resistant to many conventional disinfectants.

Eimeria

monoxenous
(1-host)
cycle

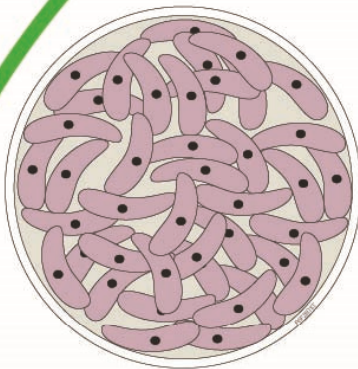


Definitive Hosts
(mammals, mainly
carnivores)



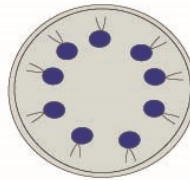
intestines
(malabsorption,
diarrhoea,
petechiation)

asexual merogony
(several cycles)

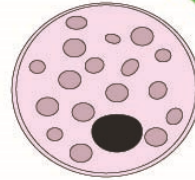


meronts
(10-100 μm)

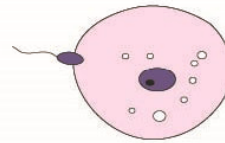
sexual
gamogony



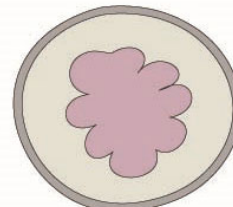
male
gamonts



female
gamonts (5-20 μm)



fertilization



sporoblast

excystation
(sporozoites
released)

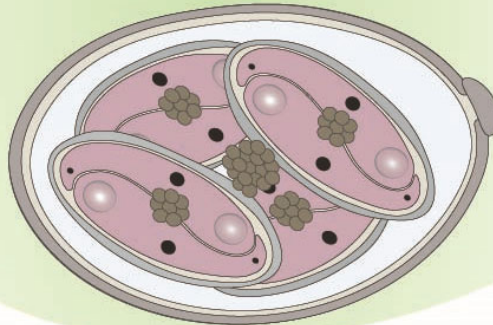
ingested

excreted



oocyst:sporocyst:sporozoite
configuration = 1:4:2

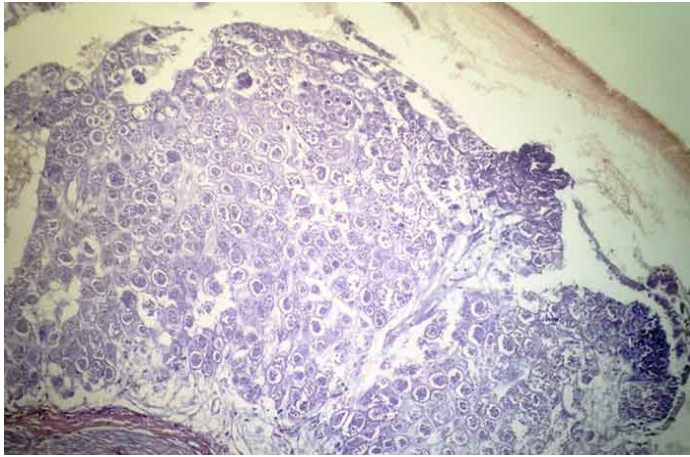
oocyst
(10-40 μm)



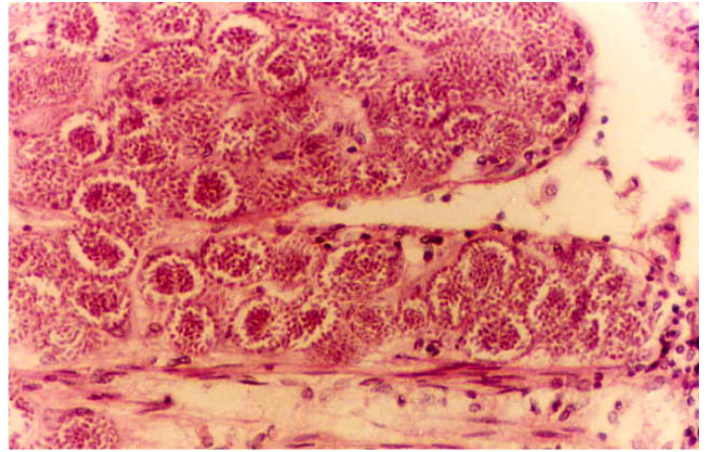
exogenous
sporulation

faecal-oral transmission via oocysts
contaminating environment (soil, water, food)

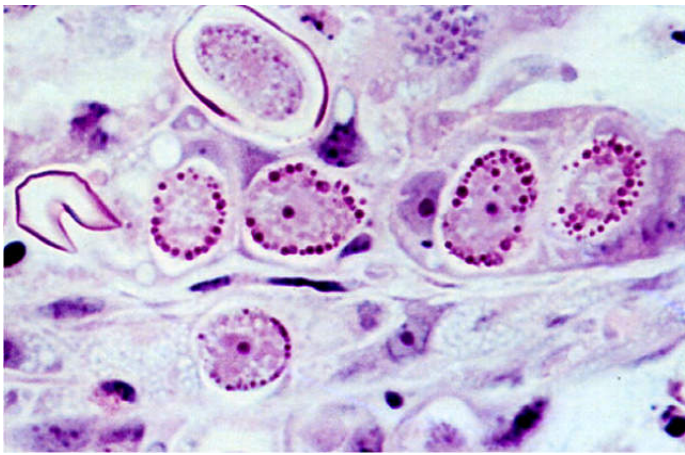




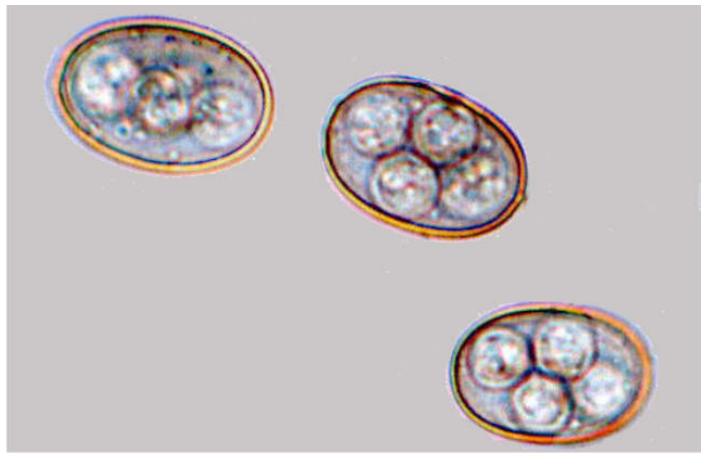
Eimeria endogenous development in kangaroo gut



Eimeria schizonts in kangaroo gut



Eimeria gamonts in sheep gut



Eimeria oocysts from faeces



Eimeria oocyst from bird faeces



Eimeria oocyst from gecko faeces